

The Pistols of Germany and It's Allies In Two World Wars



Volume 1



**Military Pistols Of Imperial Germany And
Her World War I Allies And Postwar
Military, Paramilitary And Police Reworks**



by

Jan C. Still





By 1914 the Central Powers nations, Germany, Austria-Hungary, Bulgaria, and Turkey were armed with a rich variety of semi-automatic pistols that had reached a fairly advanced state of development. A pistol triggered the Great War and pistols were one of the principal weapons used in the ensuing murderous close range and hand to hand combat. This war and subsequent peace set the stage for the rise of Nazi Germany and the next World War. Many of the World War I German pistols were reissued to the Reichswehr and right wing or early Nazi paramilitary groups. Both the wartime and post war reissue pistols bear specific military markings. These markings often indicate a military branch and sometimes a specific unit. These marked pistols reflect the history of this period and this book describes the historic setting, military markings, unit designations, production, specifications, ballistics and current market value of these pistols. Some of these are the most intricately machined and finely finished military pistols ever produced. Over 60 pistol variations are described and over 70 photographs presented. Much previously unpublished information on Lugers, Mausers, Walthers, Sauers, Brownings, Steyrs, other pistols and on military or police unit designations is presented. The book is an indispensable reference for both the Imperial and Nazi collector or dealer.





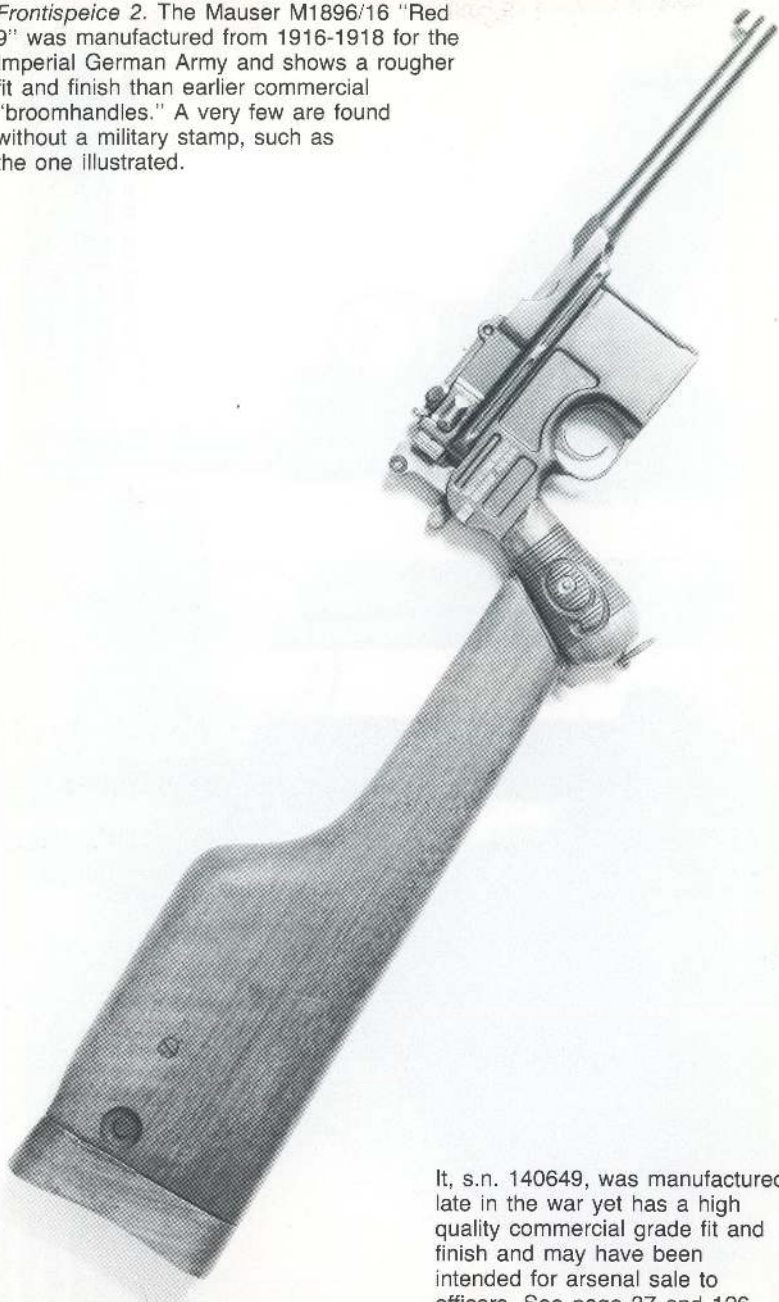
Frontispiece 1.a. 1908 and 1914 DWM Commercial Lugers were manufactured from 1908 to 1914 or 1915. A few were procured and marked by the Imperial German Army, Navy or Reichs Gendarmerie. Illustrated is a 1908 Commercial Army, s.n. 70756, that was manufactured in about 1913 with a hold open. It has military proofs unique to this variation, a matching magazine and a high grade commercial quality finish. See page 23.



Frontispiece 1.b. 1908 Commercial Army as issued with holster, loading tool and extra magazine. It is not commercially proofed.

The sear bar has been arsenal relieved and additional serial numbers placed in the military (exposed) style. A sear safety indicates police reissue after World War I.

Frontispeice 2. The Mauser M1896/16 "Red 9" was manufactured from 1916-1918 for the Imperial German Army and shows a rougher fit and finish than earlier commercial "broomhandles." A very few are found without a military stamp, such as the one illustrated.



It, s.n. 140649, was manufactured late in the war yet has a high quality commercial grade fit and finish and may have been intended for arsenal sale to officers. See page 37 and 126.

The Pistols of Germany and It's Allies In Two World Wars

Volume 1

**Military Pistols Of Imperial Germany And
Her World War I Allies And Postwar
Military, Paramilitary And Police Reworks**

by

Jan C. Still

Published By

Jan C. Still, Box 188, Douglas, Alaska 99824

© 1982 by Jan C. Still

All rights reserved. No part of this book may be reproduced or utilized in any form or by any means, electronic or mechanical, including photocopying, recording, or by any information storage and retrieval system, without permission in writing from the copyright holder

Jan C. Still
Box 188
Douglas, Alaska 99824

Printed in the United States of America

Library of Congress Catalog Card Number:
ISBN: / Paperback

10 9 8 7 6 5 4 3 2 1

ACKNOWLEDGMENTS

The main source of information and assistance in preparing this book were the members of the National Association of Automatic Pistol Collectors and its publication **AUTO MAG***. The following members made the most important contributions:

Tom Knox, St. Louis, Missouri
Reinhard Kornmayer, West Germany
Edward Macauley, Soquel, California
Bernie Lafferty, East Hartford, Connecticut
Don Rousseau, Anchorage, Alaska
Joe Wotka, Clayton, Missouri
Pat Redmond, Westfield, Indiana

A special thanks to: David Byron, Ruth Pratt and Franz Kraft, all of Florida, who did the typesetting, proofed the German and sought a printer, to Mike Affleck, Juneau, Alaska who did the photographic work and to Paul Marks, Juneau, Alaska who drafted the map. The following shared pistols to be photographed or photographs of pistols: R. Kornmayer, D. Byron, D. Rousseau, E. Macauley, E. Hildebrand, T. Brenner and K. Weir.

The following contributed information:

R.E. Benson, B. Best, J. Carlson, J. Coe, L. Coatney, W.O. Drollinger, W. Erickson, J.M. Gambro, J. Gillespie, A. Gordon, F.B. Hebitch, T. Heller, D. Hough, R. Jensen, D. Johnson, R.J. Koegh, R.E. Knight, R.D. Lechman, G. Medlin, S. Pearl, J. Rankin, B. Ratcliffe, J. Remling, B. Seigas, R. Taylor, H. Tokarsky, J. Walter, and C. Yow

Also a number of members contributed information through **AUTO MAG**. Additional data, information or corrections should be addressed to:

Jan C. Still
Box 188
Douglas, Alaska 99824

**AUTO MAG, edited by T. Knox, is an informal publication on automatic pistols that contains a large variety of articles and comments from leading collectors the world over. For more information write:*

*National Automatic Pistol Collectors Association
Box 15738
Tower Grove Station
St. Louis, Missouri, 63163*

CONTENTS

INTRODUCTION	1
GERMANY	
Military history	3
German Military Pistols - German Manufacture	6
Proofs and Inspection Stamps	6
P 04 IMPERIAL NAVY	7
P 08 IMPERIAL MILITARY DWM	13
1908 and 1914 DWM COMMERCIAL MILITARY	23
P 08 IMPERIAL MILITARY ERFURT	28
LANGE P 08 ERFURT AND DWM	28
Trommel Magazine	36
M1896/16 MAUSER	37
M1896/12 MAUSER	38
M6 WALTHER	40
M4 WALTHER	40
1913 SAUER	41
07 DREYSE	41
FL SELBSTLADER	42
BEHOLLA	42
MENTA	50
1914 MAUSER	50
JÄGER	51
German Military Pistols - Belgian Manufacture	52
1900 BROWNING	52
1903 BROWNING	52
1908 BAYARD	54
AUSTRIAN-HUNGARIAN EMPIRE	
Military History	55
Austro-Hungarian Military Pistols	61
M7 ROTH STEYR	61
1912 STEYR HAHN	62
1912 STEYR HAHN ROMANIAN - Captured	62
1912 FROMMER STOP	64
M1896/12 MAUSER AUSTRIAN	64
1908 STEYR	64
BULGARIA	
Military History	67
Bulgarian Military Pistols	67
1900 BULGARIAN LUGER	67
1906 BULGARIAN LUGER	67
1908 BULGARIAN LUGER	68
OTTOMAN EMPIRE - TURKEY	
Military History	73

Turkish Military Pistols	75
M1896 TURKISH MAUSER	75
M1903 TURKISH BROWNING	75
POST WAR GERMAN MILITARY - PARAMILITARY AND POLICE REISSUE OR REWORK OF WORLD WAR I MILITARY PISTOLS	
Introduction	76
Reichswehr Pistols - 1920 Stamp	77
P04, P08, LANGE P08	77
M1896/16 (Red 9) or M1896/12 MAUSER	78
1914 MAUSER, 1913 SAUER, 1900 BROWNING, 1908 BAYARD	78
P08 Sneaks	79
Other World War I Military Pistols Routed to the German Military, Paramilitary or Police	86
P04, P08, LANGE P08	86
M1896/16 (Red 9) or M1896/12 MAUSER	86
07 DREYSE	86
1912 STEYR HAHN	86
1908/34 STEYR	86
GERMAN MILITARY AND POLICE UNIT MARKINGS	
Introduction	91
German Naval Unit Markings	91
1904-1918 Imperial	91
1920-1933 Weimar	92
German Army Unit Markings 1908-1918	92
R.G. Unit Markings	101
Deaths Head (Totenkopf) Luger - World War I	105
Reichswehr Unit Markings	109
Prussian State Police Unit Markings	112
Other Weimar Police Marked Pistols	118
Hamburg Police	119
Berlin Police	119
Munich Police	119
Reich Finance Administration	120
Other Police Unit Markings	120
FINAL NOTE	121
APPENDICES	
A. PISTOLS NOT LISTED IN TEXT	122
GERMANY	122
M1879 AND M1883 REICH REVOLVERS	122
M1896 MAUSER	122
M1912/14 MAUSER	122
1902 COMMERCIAL TEST LUGER	124
1906 COMMERCIAL TEST LUGER	124
1910 BROWNING	124
BERGMANN-BAYARD	124
1912 FROMMER STOP	124
DREYSE Cal. 9mmP.	124

WARTIME COMMERCIAL PISTOLS	126
AUSTRIA-HUNGARY	130
M1896 RAST & GASSER REVOLVER	130
1908 STEYR Cal. 6.35mm	130
1907 DREYSE	130
FINLAND	130
M1896/12 MAUSER	130
B. DETAILED CHARACTERISTICS OF WORLD WAR I PISTOL MODELS AND AMMUNITION BALLISTICS	134
C. PISTOL VALUES	136
D. REICHSWEHR UNIT DESIGNATIONS	138
BIBLIOGRAPHY	142
SUMMARY TABLE	145
SUMMARY MAP	Inside Back Cover

Illustrations

Pistols illustrated from the authors collection unless otherwise noted. Photographs by M. Affleck, Juneau Alaska.

Figure 1. Imperial Naval soldiers armed with the Navy Luger.

Figure 2. Matrosen (sailor) infanterie armed with the Navy Luger.

Figure 3a. P 04 Navy - 1914 variation dated 1917.

Figure 3b. Left side P 04 Navy showing details of Naval stamps.

Figure 3c. Naval Luger and holster with accessories.

Figure 4. Infantry armed with the military (Army) Luger.

Figure 5. Soldiers armed with the P 08.

Figure 6a. Imperial military (Army) Lugers showing the 1908 and 1914 variations of Erfurt and DWM.

Figure 6b. Toggle and chamber markings for the Lugers in Figure 6a.

Figure 6c. P 08 Imperial receiver military stamps.

Figure 6d. P 08 - 1912 dated Erfurt bearing Bavarian unit markings.

Figure 6e. Böhler steel hardness stamp.

Figure 7 1908 Commercial Luger with R.G. 14^b unit markings and double crown/B military stamps.

Figure 8. Soldier of the Field Artillery armed with the Lange P 08.

Figure 9a. Two types of stocked handgun: Lange P 08 and M1896/16 "Red 9."

Figure 9b. Right side of Figure 9a pistols.

Figure 9c. Receiver proofs: M1896/16 and 1915 dated Lange P 08.

Figure 9d. Lange P 08 and M1896/16 holster stock details.

Figure 9e. Lange P 08 showing top view and details of rear sight.

Figure 9f. Lange P 08 and Trommel magazine from a military manual.

Figure 10. Walther Model 6 with Imperial military stamp.

- Figure 11a.* Imperial military issue 7.65 cal. pistols, 1913 Sauer, 1914 Mauser, 07 Dreyse, FL Selbstlader, M4 Walther and Jäger.
- Figure 11b.* Imperial military issue Menta and Beholla.
- Figure 11c.* 1914 Mauser Imperial variations.
- Figure 11d.* Trigger guard eagles (military proofs) on Imperial 7.65 cal. pistols, 1913 Sauer, Beholla and 1914 Mauser.
- Figure 11e.* Imperial military stamps: 07 Dreyse, Jäger, 1914 Mauser, FL Selbstlader.
- Figure 11f.* Imperial military stamps: Walther M4, Menta, 1913 Sauer.
- Figure 11g.* Imperial issue holsters for 07 Dreyse, M4 Walther and 1900 Browning.
- Figure 12.* Pistols captured or manufactured in Belgium for the Imperial German military, 1900 and 1903 Browning, 1908 Bayard.
- Figure 13a.* Imperial Austro-Hungarian military pistols, 1912 Steyr Hahn and M7 Roth Steyr.
- Figure 13b.* M7 Roth Steyr - Austrian and Hungarian manufacture.
- Figure 13c.* Austro-Hungarian military stamps.
- Figure 13d.* Steyr Hahn with issue holster and FN ammunition.
- Figure 14.* Austro-Hungarian military pistols: 1908 Steyr, 1912 Frommer Stop.
- Figure 15.* Austro-Hungarian M1896/12 Mauser with stock and accessories.
- Figure 16a.* Bulgarian Luger and Turkish M1903 Browning.
- Figure 16b.* Crests on Bulgarian Luger and Turkish M1903 Browning.
- Figure 16c.* Crests and inscriptions on Bulgarian Luger and Turkish M1903 Browning.
- Figure 16d.* Holster for 1903 Browning Turkish contract.
- Figure 17.* German adviser to the Turkish military armed with the Lange P 08.

Figure 18. Pistols with the 1920 Reichswehr stamp: P 08, M1896/16, 1900 Browning, and 1913 Sauer.

Figure 19. Sneak Luger shown with SA and SS daggers and NSDAP gorget.

Figure 20a. P 08 sneaks with Prussian State Police grip strap markings.

Figure 20b. Toggle and chamber markings for Figure 20a sneak Lugers.

Figure 20c. Rework stamps, Figure 20a, sneak Lugers.

Figure 20d. Prussian State Police grip strap markings, Figure 20a, Lugers.

Figure 21a. Pistols with indications of postwar military or police reissue: Steyr Hahn, 1914 Erfurt, 07 Dreyse, and 1908/34 Steyr.

Figure 21b. Steyr Hahn Nazi police acceptance stamp and Steyr (E/623) barrel on a 1914 Erfurt.

Figure 22. 1913 Sauer with eagle/N Nazi commercial proof.

Figure 23. Navy soldiers armed with Navy Lugers.

Figure 24. Chevauleger Regiment unit markings on a P 08 and holster.

Figure 25a. 1914 DWM commercial with R.G. 136^b, Gendarmerie Brigade Alsace Lorraine unit markings.

Figure 25b. Style and details of R.G. 136^b engraving.

Figure 26a. Death head 1918 dated Erfurt.

Figure 26b. Death head or totenkopf.

Figure 27. Luger with Reichswehr unit markings.

Figure 28. Identification of Prussian State Police unit markings on Lugers and a Bayonet.

Figure 29. M1879 and 1883 Reich revolvers.

Figure 30. Bergmann Bayard 1910.

Figure 31. M1896/16 "Red 9" commercial with matching stock.

Figure 32. Model 1896 Rast and Gasser revolver.

Figure 33. 1908 Steyr caliber 6.35mm.

Figure 34. M1896/12 wartime commercial with Finnish military stamp.

TABLES

Table 1. DWM and Erfurt military Luger serial ranges and production.

Table 2. Serial ranges and information on 1908 and 1914 DWM Commercial Lugers with military stamps or police unit markings and some standard commercial Lugers of interest. After **AUTO MAG** Vol. XII p. 209, and information from Pat Redmond, 1982.

Table 3. Imperial German Fleet marking designations (found on Navy Lugers).

Table 4. German Army unit marked pistols.

Table 5. Reichswehr marked pistols.

Table 6. Prussian State Police marked pistols.

Table 7. Weimar Police marked pistols.

Table A-1. Ordnance and commercial pistols offered for sale by the Prussian Army to officers on 8 August 1917.

Table B-1. Detailed characteristics of World War I military pistol models.

Table B-2. World War I Central Powers pistol ammunition ballistics.

Table C-1. Values of World War I Military Pistols with military stamps or other indications of official procurement.

Table D-1. Reichswehr unit designations.

INTRODUCTION

By 1914 Europe was on the brink of war: bellicose nationalism, economic and territorial rivalries, and entangling alliances were the underlying causes. The June 28, 1914 assassination of Archduke Franz Ferdinand (heir apparent to the Austrian throne) by a Serbian nationalist provided the trigger and within a year all Europe was a grim battlefield. Armies were fighting in France, Russia, Poland, Italy, the Balkans and Turkey along fronts over 500 miles wide. It was war waged on the land, sea and in the air with a scale, violence and industrial intensity the world had never seen. Barbed wire and machine guns dominated the defensive positions on the constricted Western Front while the vast spaces of the Eastern Front allowed expansive battles of sweeping maneuver. While poison gas and the machine gun extracted heavy casualties, fast firing artillery was the predominant killer most often blowing its victims to bits. In four years 13 million would die and another 30 million would be wounded. The harsh peace terms and German battle experience would set the stage for the next world war.

By 1914 the armies of the Central Powers had largely replaced the revolver with a rich variety of semi-automatic pistols, which had reached a fairly advanced state of development. Arms manufacturers in Germany, Austria-Hungary and Belgium supplied over 2.6 million semi-automatic pistols for official procurement to the military of Germany, Austria-Hungary, Bulgaria and Turkey.

Specific military markings¹ were applied to the pistols procured by the armies of the Central Powers. In some cases a military branch or unit is indicated. These marked pistols reflect the history of the World War I era and this book describes these pistols. Although not capable of producing the casualties of artillery, machine guns or poison gas, the pistol as a personal defense weapon had a special significance to the officers and soldiers who carried them and they were one of the principal weapons used in the murderous close range and hand to hand combat that regularly occurred in the battles on every front. When his rifle or machine gun was jammed or empty and the enemy was charging at close range with blazing rifle and fixed bayonet, a soldier's life could well depend on a quick shot from his pistol.

¹Generally termed *ordnance* or *arsenal stamps*.

This book will first briefly describe the historic wartime setting in which the pistols were used and then describe each pistol type and its military markings in detail. The last portion briefly describes the identification of unit markings and World War I military pistols reworked and reissued to the postwar German military or police. Appendix A covers wartime commercial pistols, issue revolvers and other pistols that may have been used or issued, while Appendix B contains pistol and ammunition specifications. Current prices for these collector pistols are in Appendix C. The map and table found in the back cover represent a summary of the more detailed information found in the text.

GERMANY

Military History

Mobilized Forces 11 million

Casualties 7.1 million

Late in the 19th century a strong German nation dominated by militaristic Prussia was forged from disunited states. By 1914 it was the military and economic rival of France, Britain and Russia. During this time, known as the Second Reich², 1871-1918, Germany was dominated by Bismark and then Kaiser Wilhelm.

The German general staff, formed in the 19th century, through excellence, training and discipline forged the best led and manned army in Europe. Early in the 20th century the Schlieffen plan was developed by this general staff to meet the demands of a two front war (France in the west, Russia in the east). Its main concept was a holding action in the east and a powerful attack through neutral Belgium flanking the French fortifications and wheeling to take Paris and to hammer the bulk of the French army and fortifications from behind.

At the onset of war (August 3, 1914) Germany immediately put the Schlieffen plan into action. The imposing line of Belgium forts at Liege were literally crushed with huge (11.5-16.5 inch) howitzers; however, the ruthless drive through Belgium brought Great Britain directly into the war. By September the heavily fortified French forts had been flanked and German columns were within sight of Paris. With a last minute rally the French and British drove a wedge into a break in the German lines and stopped the German drive with savage hand to hand fighting at the First Battle of the Marne. A subsequent attempt to reach the Channel ports was stopped at Ypres (where Germany used poison gas for the first time on the western front). For the next four years this 350 mile front remained essentially static and great battles of attrition were fought with little gain. The bloody Somme and Verdun were such battles accounting for over ¾ of a million casualties.

At sea both Britain and Germany were armed with a new class of battleship. These powerful ½ mile long steel ships (termed dread-nought) bristling with long barrelled cannon (whose shells ripped

²The period 800-1800 is known as the First Reich of the Holy Roman Empire of the German nation.

through the air like freight trains) epitomized this new era of mechanized warfare. The British fleet greatly outnumbered its German rival and it was Germany's strategy to avoid major fleet actions. The battle of Jutland in 1916 was the only major engagement and although Germany got the better of it materially it was strategically indecisive. Germany's use of unrestricted submarine warfare in 1917 against Britain was effective but indecisive, while the British economic and naval blockade starved and weakened the German civilian population.

The vast Eastern Front provided the maneuvering room for Germany to use its tactical superiority to inflict grievous defeats on the massive Russian armies. Russia's ill-equipped and led army suffered over 9 million casualties during three years of war, its greatest losses at the battles of Tannenberg (1914), Winter Battle (1915) and Gorlice-Tarnow (1915). By 1917 Russian losses on the battlefield and the Bolshevik Revolution knocked her out of the war. The subsequent Treaty of Brest-Litovsk imposed by Germany was the greatest humiliation in Russian military history. Under its harsh terms Russia was cut off from the Baltic, landlocked to the south, lost 34 percent of her population and 89% of her coal reserves.

With the east secured, German troops streamed westward for the final battles of the war (1918). In a series of 5 savage attacks (Kaiserschlacht), using special storm trooper infiltration tactics, the Germans made significant breakthroughs; however, with its loss of 800,000 men (mostly storm troopers) in four months the depleted and exhausted army was unable to capitalize on its gains. By this time the fresh Americans joined the battle in force. The turning point was the second battle of the Marne in which the British, for the first time, launched a massed tank attack (coordinated with air strikes) and, in what became known as the Black Day of the German army, she was decisively defeated. In November 1918 Germany surrendered.

Throughout the war Germany maintained the best led and manned Army in Europe. It inflicted twice the casualties on opposing armies and though consistently outnumbered 2½ to 1, it won the war on the Eastern Front and twice (1914 and 1918) came close to victory on the Western Front.

The Treaty of Versailles imposed harsh territorial losses and an indemnity on Germany and severe restrictions on the military (restrictions were so detailed as to dictate the maximum caliber,

8mm, and barrel length, 3.94 inches, for pistols). It was a humiliation for Germany which only stimulated a revival of German nationalism and covert German rearmament in the early 1930s.

Over 2.1 million handguns were manufactured for the World War I German military by plants in Sömmerda, Zella, Suhl, Oberndorf, Erfurt, Berlin and Herstal in Belgium.

GERMAN MILITARY PISTOLS

German Manufacture

Proofs and Inspection Stamps

Pistols known to be officially procured by the Imperial German Army bear military inspection stamps and or proofs³. These take the form of stylized eagles and Germanic scriptic letters or symbols. On Lugers they are found on the receiver, barrel, breechblock, and other locations (World of Lugers Proof Marks by Costanzo contains a detailed listing). Military Lugers are not commercially proofed while some Commercial Military Lugers bear both commercial and military proofs. Other Army procured pistols (except the 1908 Bayard) bear crown/N or crown/U commercial proofs along with a military inspection stamp, usually at one location and some bear a military proof in the form of a stylized eagle.

Pistols known to be officially procured by the Imperial German Navy bear military inspection stamps in the form of a crown/M.

³Appendix A covers pistols without military stamps.

P 04 IMPERIAL NAVY⁴ Fig. 1,2,3,Cal. 9mm P⁵**Military Stamp:****Commercial Proof:** None

Distinguishing Characteristics: 6-inch barrel, DWM toggle, stock lug, two position rear sight and commercial (hidden) style serial number placement are characteristic of all Navies.

Var. 1904: Thick barrel, blank chamber, long frame, toggle lock, grip safety-safe position with lever upward and originally no proofing or military stamps. Known serial range 35-1153. Est. Prod. 1200, very rare.

Var. 1906: blank chamber, long frame, and grip safety-safe position with lever upward; —most later altered to down position. Those without the altered safety are termed first issue and those with the altered safety second issue. Known serial range 9-998b. Est. Prod. 21,000.

Var. 1908: blank chamber, long frame and lack of grip safety distinguish this variation. Known serial range 1044b-9505b. Est. Prod. 8500.

Var. 1914: chamber, front sight, and left side of frame dated 1916, 1917 or 1918, short frame and sear bar and no grip safety. Known serial ranges: 1916, 44-9433; 1917, 20-7741a; 1918, 159-5309. Est. Prod. 32000.

In 1904 the Navy became the first branch of the German military to adapt the Luger. Five variations of "Navy" Luger were produced from 1904-1918 by Deutsche Waffen u. Munitionsfabriken (DWM) in Berlin.

Most of these were issued with holster, cleaning rod, tool and two extra magazines in a pouch complete with shoulder stock that fastened to the back of the holster and attached to the pistol stock lug by means of an iron. A few were issued without the stock. Some have

⁴The German designation is *Marine Model 04*, the widely used collectors designation has been retained.

⁵*Parabellum*



Figure 1. Imperial Naval soldiers armed with the Naval Luger. Probably taken in 1911-1913 after completion of initial training. The bayonets are the Naval model 1911, a boarding saber. The inscription on the middle soldier's cap is *Matrosen-Artillerie* while that on the others is *Torpedo-Division*. (Luger-archive Reinhard Kornmayer)



Figure 2. World War I Matrosen (sailer)-Infanterie armed with the Naval Luger.
(Luger-archive Reinhard Kornmayer)



Figure 3a. P04 Navy-1914 variation dated 1917. The 6 inch barrel, two position rear sight, stock lug and lack of proofs on right receiver characterize all Imperial Naval Lugers.



Figure 3b. Left side view of 3a showing Imperial Naval stamps on the left receiver and the 1917 date on the left frame.

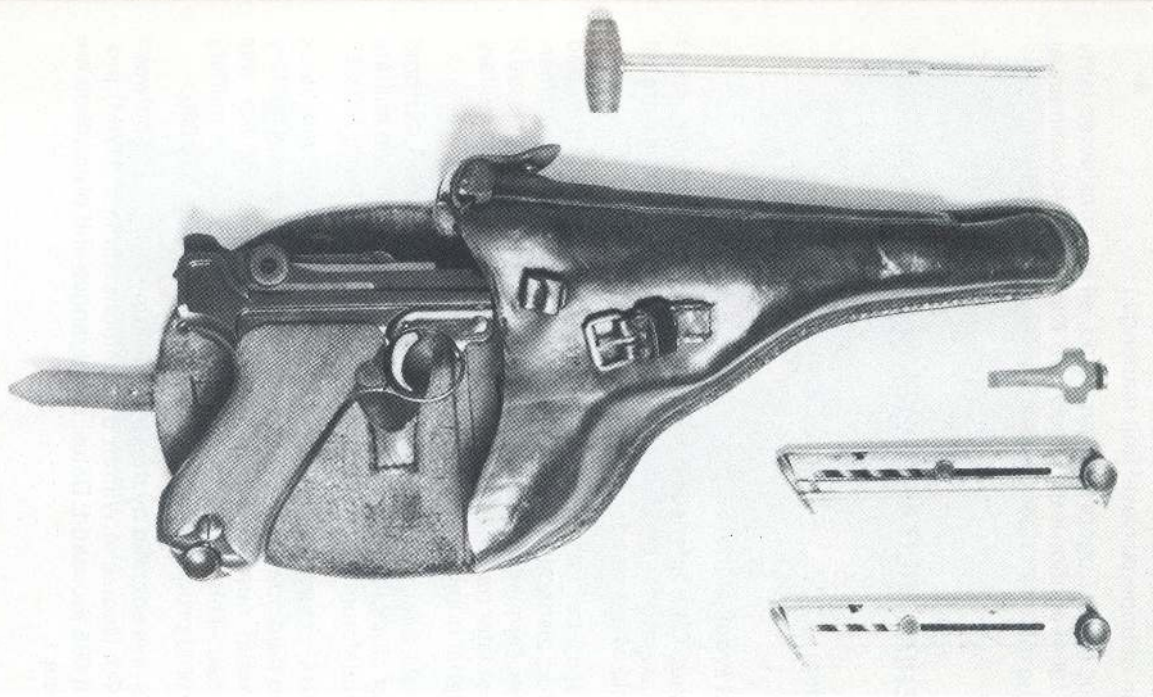


Figure 3c. Naval Luger shown with holster stamped JON. HUBER SATTlerei, MÜNCHEN and stamped with crown over .l. This holster has belt loops and was never intended for attaching a board stock. Some P 04s were never issued with stock (**AUTO MAG VI**, p 191, Knox) the other accessories are tool, two extra magazines and issue cleaning rod.

unit markings on the grip strap. One of these markings has been identified as being issued to a Naval unit in China! (See table 3 for the identification of Imperial Naval unit markings.)

Only 62,000 Naval Lugers were procured, all are considered fairly rare and the 1904 variation is extremely rare. Navy proofed commercial and first issue military Lugers are discussed on pages 23 and 24.

P 08 IMPERIAL MILITARY DWM Fig. 4, 5, 6 Cal. 9mm P.

Military Stamp:



 /scriptic sym.

Commercial Proof: None

Distinguishing Characteristics: 4-inch barrel, DWM toggle, short frame, military proofs on barrel, receiver and breechblock are all characteristic of the standard DWM military Luger.

Var. 1908 First Issue: blank chamber, lack of hold open and stock lug, distinctive proofs on left side of receiver and commercial style serial number placement characterize the first issue P 08. Most later had the hold open added and a few have military style serial numbers added. Est. Prod. 25,000, fairly rare.

Var. 1908 Second Issue: chamber dated 1910-1913, no hold open or stock lug, proofs on right side of receiver and military style serial number placement by mid 1912. Est. Prod. 70,000.

Var. 1914: chamber dated 1913 (few) and 1914-1918, with stock lug and hold open, proofs on right side of receiver and military style serial number placement, in 1916 the sear bar was shortened. This would be the basic configuration of military Luger until production ceased in 1942. Est. Prod. 570,000.

The Luger was adapted by the German Army in 1908 and between 1908 and 1918 Deutsche Waffen u. Munitionsfabriken (DWM) produced about 665 thousand. Dates, serial ranges and production are given in Table 1.

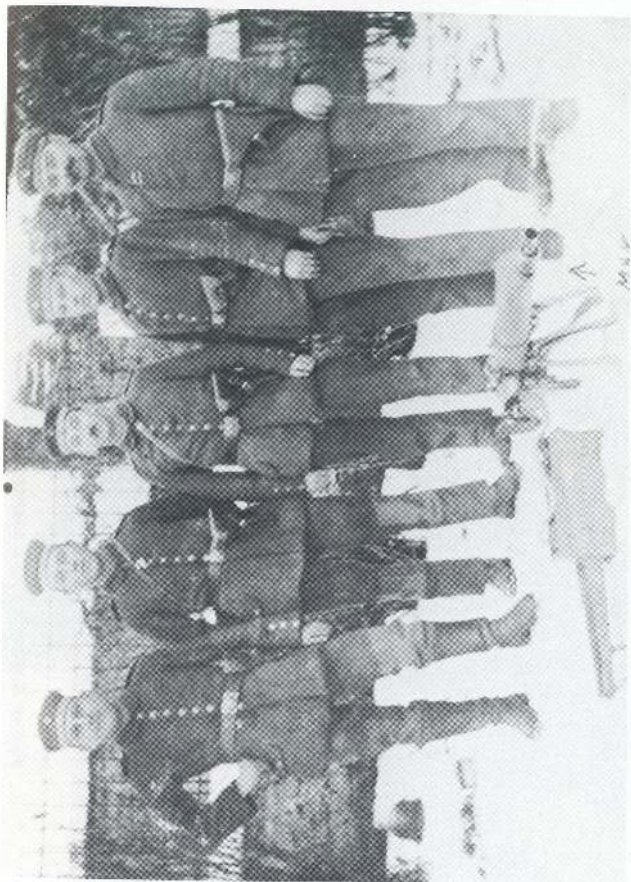
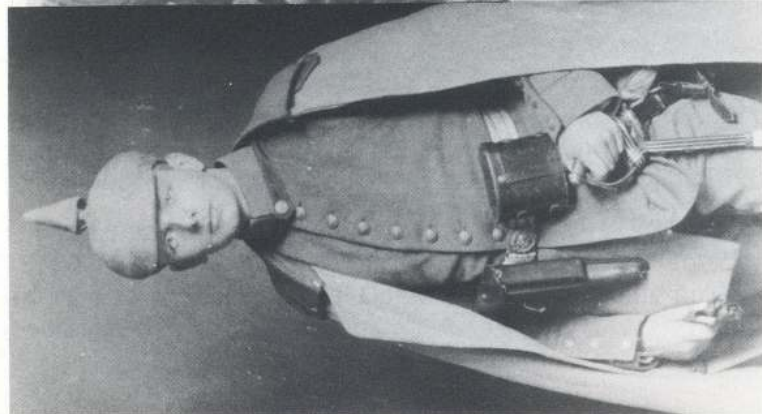


Figure 4. Photo marked France 26, Jan. 1918, showing German infantry soldiers armed with the military (Army) Luger. The second from right soldier is armed with a 7.65 caliber pistol. Each infantry company carried the light machine gun (08/15 shown) (Luger-archiv Reinhard Kornmayer)



left: Photo dated 6 Oct. 1915 showing ROLF JAMROWSKI, Second Lieutenant in Danziger Infanterie Regiment Nr. 128.

center: Soldier firing a heavy machine gun.

right: This photograph is marked "Arthur Rhode 1914-18." He was a gunner of a machine gun - sniper division 1917/1918.

Figure 5. World War I soldiers armed with the P 08. (Luger-archive Reinhard Kormmayer)



Figure 6a. Variations of the Imperial military (Army) Luger, top to bottom: 1908 first issue DWM, blank chamber, s.n. 2108a; 1908 second issue DWM, 1913 chamber date, s.n. 1386b; 1914 DWM, 1917 chamber date, s.n. 6302b; 1908 Erfurt, chamber date 1912, s.n. 5143; 1914 Erfurt, chamber date 1914, s.n. 1176; Note the lack of stock lug on the 1908 variations. 1917 DWM and 1914 Erfurt from the collection of E. Hildebrand, Douglas, Alaska.



Figure 6b. Chamber and toggle markings for the Lugers in figure 6a. The hidden-commercial style serial placement on the 1908 first issue (blank chamber) DWM contrasts with the military style placement on the other variations.

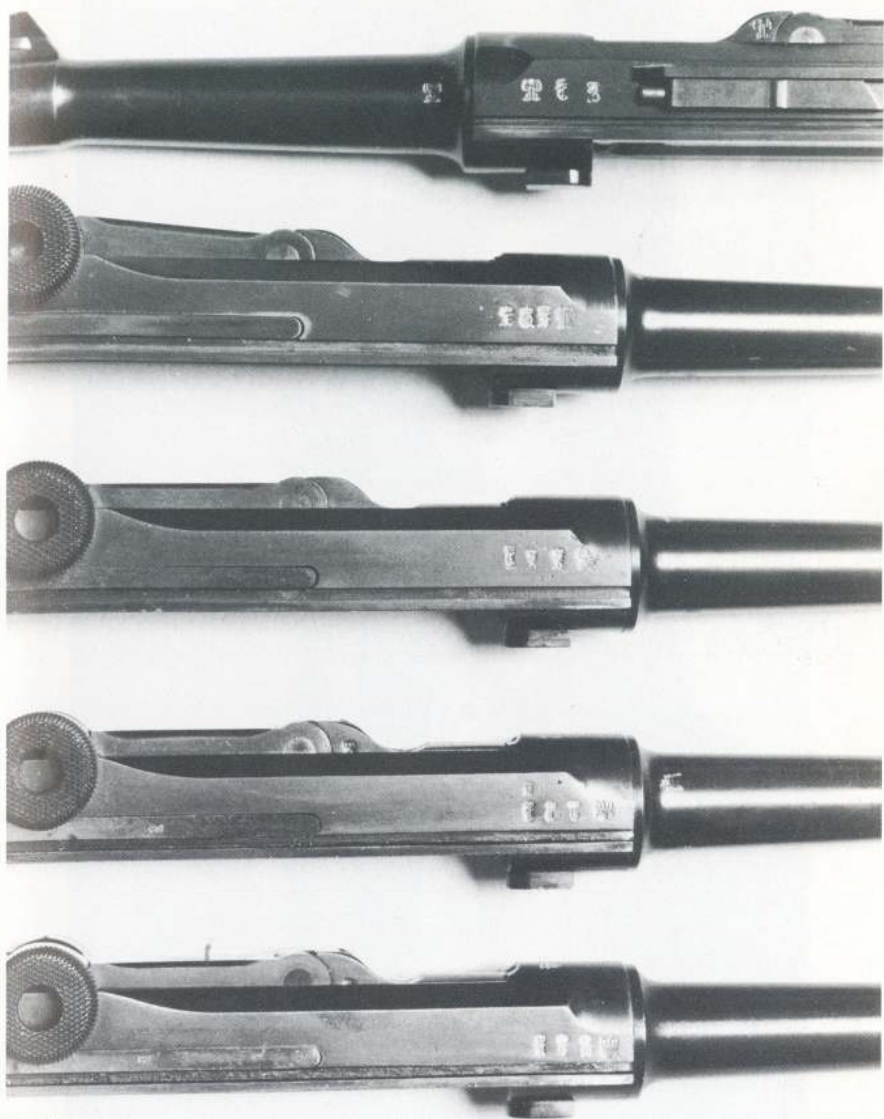


Figure 6c. P 08 Imperial receiver military stamps, top to bottom: 1908 DWM 1st issue, 1913 dated DWM, 1917 dated DWM, 1912 dated Erfurt and 1914 dated Erfurt.



Figure 6d. P 08-1912 dated Erfurt bearing Bavarian unit markings: Bavarian 13th Infantry Regiment 9th Company Weapon No. 5. See section covering Army unit marking for details. From the collection of Dan Kattenhorn, Juneau, Alaska.



Figure 6e. The Bö 25 stamp on this 1913 DWN indicates the barrel is made of Böhler steel. This stamp is found on a very few 1913 and 1914 DWM and Erfurt Lugers. It indicates hardness for an experimental hardness process.

Table 1. DWM and Erfurt military serial range and production. Indications are that in 1917 both the P 08 and the Lange P 08 occupy the same serial range because both fill the same letter blocks and because of production constraints. Based on the table by Lafferty (1975, p. 58) and conversation with Lafferty (1981).

Luger Model & Date	Known Letter Blocks n.l. = no letter or first	Known Serial Range	Est. Production
DWM			
M1908 1st Issue Blank Military	n.l., a, b	34 - 2636b	25000
M1908 2nd Issue			
1910 Military	b, c, d	5095b - 5358d	20000
1911 Military	d, e	7248d - 4825e	15000
1912 Military	n.l.	599 - 9974	10000
1913 Military	n.l., a, b	2617 - 3850b	25000
M1914			
1914 Military	n.l., a, b, c	282 - 6212c	40000
1914 Lange	n.l., a	4147 - 539a	10000
1915 Military	n.l., a, b, c, d, e, g, i	1398 - 2557i	100000
1915 Lange	n.l., a	2988 - 6166a	20000
1916 Military	n.l., a, b, c, d, e, f, h, k, m, n, q	287 - 5438q	180000
1916 Lange	n.l., a, b	1112 - 2660b	25000
1917 Military	n.l., b, c, d, e, f, m, n	587 - 3521n	60000
1917 Lange	n.l., a, b, c, d, e, f, g, h, i, k, l, m	211 - 3085m	100000
1918 Military	n.l., a, b, c, d, e, g, k, r	3690 - 9018r	190000
1918 Lange	n.l., a, b	320 - 6402b	25000
	Total Production Military Model DWM		665000
	Total Production Lange Model DWM		180000

Luger Model & Date	Known Letter Blocks n.l. = no letter or first	Known Serial Range	Est. Production
ERFURT			
M1908			
1911 Military	n.l.	575 - 9548	10000
1912 Military	n.l., a, b	255 - 866b	22000
1913 Military	n.l., a, b	575 - 2563b	25000
M1914			
1914 Military	n.l., a, b	2137 - 539a	25000
1914 Lange	n.l., a, b	318 - 3791b	25000
1915 Military	None Reported	—	—
1916 Military	n.l., a, c, d, e, g	13 - 5764g	80000
1917 Military	n.l., e, g, h, i, k, r, v	844 - 2854v	150000
1918 Military	n.l., b, c, d, g, l, m, n, r, s, t	304 - 5816s	180000
	*Total Production Military Model Erfurt		492000
	Total Production Lange Model Erfurt		25000

*Note: it is likely that Erfurt skipped some letter blocks and the estimated production reflects this

Almost all P 08 Military⁶ were procured by the Army for issue to Army units. An exception is a very few low serial number Lugers with some of the characteristics of the P 08 First Issue (blank chamber and no hold open) that bear Navy crown/M stamps and no other military stamps. Reported serial numbers are 76, 111 and 135.⁷

1908 and 1914 DWM COMMERCIAL MILITARY Fig. 7, Frontispiece , Fig. 25

Cal. 9mm P.

Military Stamp: crown/scriptic symbol, military eagle proof, Naval crown/M or R.G.

Commercial Proof: occasionally crown/N

Distinguishing Characteristics: 4-inch barrel, blank chamber, DWM toggle, long sear bar, short frame, hold open may not be present, five digit serial number, commercial style serial placement;—occasionally parts will be numbered in the military style, stock lug on the 1914 var. and absent on the 1908 var.

Var. Commercial Army: military (Army) stamp or unit marking. Est. Prod. 900

Var. Commercial Navy: Navy stamps. Est. Prod. few hundred

Var. Commercial Reichs Gendarmerie, R.G. unit markings engraved on the left frame panel. Est. Prod. 400

1908 and 1914 DWM Commercial Lugers were manufactured from 1908 to 1914 or 1915. They are of the highest quality and a few were procured and marked by the Imperial German Army, Navy, or Reichs

⁶ "P 08 military" has long been used to describe the Luger model issued to Army units. Perhaps P 08 Army would be more descriptive. For the sake of consistency with past usage the term military is used where in some cases the term Army would probably be more precise.

⁷ T. Knox reports that serial number 135 has Naval crown/M and or crown proofs on the left receiver, barrel and breech block, no commercial proofs and an added hold open. Unusual for a 1908 first issue, it has a stock lug. These may have been for a special Naval contract with its own serial range.

Gendarmerie. Kenyon (1969 p. 158) used the term 1908 Commercial Military to refer to those specifically procured by the Army. Here this term is used generally and the Army, Navy and R.G. marked variations are designated as such. Table 2 lists the various types of 1908 and 1914 Commercial Military and some commercial Lugers of interest.

The main serial range block for the 1908 Commercial Army is 69600-70907 Costanzo (p. 232). Commercial Army Lugers have military stamps on the right receiver that are unique to this variation, lack commercial proofs and were manufactured with a hold open. They were manufactured in about 1913 or 1914 and were apparently not test pistols but were routed to Army service. See frontispiece.

Navy proofed 1908 Commercials are reported in the 69111-69576 serial range while some commercials in the 71420-72215 range are Navy proofed. Most of these have crown/N commercial proofs with added Naval crown/M Stamps.

Two 1908 commercials with serials well below the above blocks, sn 60530 and 61477, have double crown/B military stamps on the right receiver. This stamp has not been observed or reported on any other commercial or military pistols but is almost certainly military. The former pistol, figure 7, has an R.G. 14^b factory (?) engraved on its left frame panel. This marking has been documented (Kornmayer 1982) as designating the **Reichs Gendarmerie**, a special police force under the Imperial Reich. The presence of military stamps on this police pistol may indicate that the Reichs Gendarmerie was a militarized police unit with close ties to the Imperial military.

1908 and 1914 Commercial Reichs Gendarmerie Lugers are found in the 60530-74707 serial range and were produced from about 1912 to 1914 or 1915.^a They are crown/N proofed, were manufactured with a hold open and are identified by an R.G. engraved in their left frame panel. See page 101 for additional information.

1908 and 1914 Commercial Military Lugers are rare and highly prized by collectors.

^aAccording to Kenyon (p. 122) the 1914 Commercial was actually manufactured in 1913.



Figure 7 1908 DWM commercial military (s.n. 60530) Luger with double Crown/B military stamps on the receiver, 8.83 military barrel land diameter on the barrel, R.G. 14^b engraved on left side panel before bluing and 14^b stamped on magazine. The R.G. is the designation for the Reichs Gendarmerie, a paramilitary police force that was active in the Alsace Lorraine and the colonies prior to 1918. It likely had close ties to the Imperial military. See figure 25. *Pistol and photograph from the collection of D.J. Rousseau, Anchorage, Alaska.*

Table 2. Serial ranges and information on 1908 and 1914 DWM commercial Lugers with military stamps or Imperial police or military unit markings and some standard commercial Lugers of interest. After Jim Cate, **AUTO MAG** Vol. XII p. 109, and information from Pat Redmond, 1982.

1908 Commercial, s.n. 39142, without hold open, BUG proofed, Imperial crown stamped above chamber, H 141 unit marking on front grip strap.

1908 Commercial, s.n. 59953, naval stamp added.

1908 Commercial, s.n. 60530, double crown/B military stamp on right receiver, hold open, and long sear bar, barrel with 8.83 military land diameter, R.G. 14^b engraved on left frame and the engraving is blued, 14^b on magazine, holster manufacture F. BIERENBREIRER-KEHL RH. and marked R.G. 14^b on inside of holster and H.9 inside flap. Holster has take down tool compartment, with punch compartment below it and cleaning rod compartment beside magazine compartment. See Figure 7.

1908 commercial, s.n. 61305, R.G. 27.

1908 Commercial, s.n. 61477, double crown/B military stamp on right receiver.

1908 Commercial, R.G. 41 (**AUTO MAG** XI p. 222.)

R.G. 51 (**AUTO MAG** XI p. 222.)

R.G. 109 with 109 marked magazine (**AUTO MAG** XI p. 222.)

1908 Commercial, s.n. 69111, Naval stamp added.

1908 Commercial, s.n. 69182, Naval stamp added.

1908 Commercial, s.n. 69548, Naval stamp added.

1908 Commercial, s.n. 69576, Naval stamp added.

1908 Commercial Army, s.n. range 69600-70907, no commercial proofs and Army stamps on right receiver, as reported by Costanzo 1977, p. 232.

1908 Commercial Army, sn. 69859

1908 Commercial Army, s.n. 70093.

1908 Commercial Army, s.n. 70756. See frontispiece

1908 Commercial, s.n. 71420, Naval stamp added.

Table 2, Continued

- 1914 Commercial, Kenyon, p. 122 reports a 1914 Commercial with added military proofs on the right receiver.
- 1914 Commercial, Navy, s.n. 72215, Naval stamps on left receiver and barrel, crown/N proofs on left receiver, bottom of barrel and breechblock, partial military style parts numbering.
- 1914 Commercial, Lange*, s.n. 73396, lazy crown/N proofs, long sear and commercial style parts numbering (Morris, 1980, p. 26.)
- 1914 Commercial, s.n. 74012, R.G. 238, complete with two matching numbered magazines and holster marked R.G. 16.
- 1914 Commercial, s.n. 74036, R.G. 252.
- 1914 Commercial, s.n. 74275, chamber dated 1915, lazy crown/N proofs, military style serial numbering of parts. This may contradict Kenyons (p. 122) estimate that 1914 commercials were manufactured in 1913.
- 1914 Commercial, s.n. 74596, lazy crown/N commercial proofs, R.G. 136^b engraved on left receiver and engraving is blued, partial military style serial number placement, hold open and long sear bar. See Figure 25.
- 1914 Commercial, s.n. 74707, R.G. 272.
- 1923 Commercial, s.n. 74845, upright crown/N proofs.

**Long or Artillery Model*

P 08 IMPERIAL MILITARY ERFURT Fig. 4, 5, 6 Cal. 9mm P.**Military Stamp:**  /scriptic sym.**Commercial Proof:** None


Distinguishing Characteristics: 4 inch barrel, crown Erfurt toggle, chamber date 1911-1918, except 1915, proofs on right side of receiver and military inspection stamps on all parts, military style serial number placement. In general, Erfurt produced Lugers have a rougher fit and finish than DWM produced Lugers.

Var. 1908: Chamber dated 1911-1913, no stock lug or hold open, most later had the hold open added. Est. Prod. 57,000.

Var. 1914: Chamber dated 1914, 1916, 1917, and 1918 with stock lug and hold open. Est. Prod. 435,000.

The Erfurt military Luger was produced by Erfurt Gewehrfabrik (the Prussian Royal Arsenal at Erfurt) from 1911-1918 (except 1915). Dates, serial ranges, and production are given in Table 1. About 492,000 were procured for the Army.

Some Lugers are stamped with military unit markings. Figure 6d. shows a Bavarian unit marking stamped on a 1912 Erfurt Luger.

LANGE⁹ P 08 ERFURT and DWM Fig. 8, 9 Cal. 9mm P.**Military Stamp:** Erfurt  /scriptic sym.DWM  /scriptic sym.**Commercial Proof:** None**Distinguishing Characteristics:** 8-inch barrel with 9 position rear

⁹Long, termed *Artillery* by American collectors



Figure 8. German soldier of the Field Artillery armed with the Lange P 08 with wooden stock. It is worn in the official style—note, the two pouches for the spare magazines fixed at the belt. His unit is "Gebirgs-Kanonen-Batterie No.2" (1914/15) a Prussian formation stationed in Waldkirch (Black Forest). It was under the command of army group "Deutscher Kornprinz" and armed with the 7.5 cm Gebirgs-Kanone type L/14 which shot a shell of 5.3 kg. (11.7 lbs.) over 6000 meters (3.7 miles). His helmet has the war cover. (*Luger-archive Reinhard Kornmayer*)



Figure 9a. Two types of stocked handgun: top, Lange P 08 dated 1915 complete with Trommel (drum) magazine; bottom, M1896/16 "Red 9" Mauser. Both, particularly the Lange P08 with Trommel magazine, were capable of a formidable volume of close range fire. The 32 shot Trommel magazine was introduced in 1917. The "Red 9" with matching shoulder stock is from the collection of E. Hildebrand, Douglas, Alaska, who liberated it from a German arms depot in March 1945.



Figure 9b. Right side Figure 9a pistols.

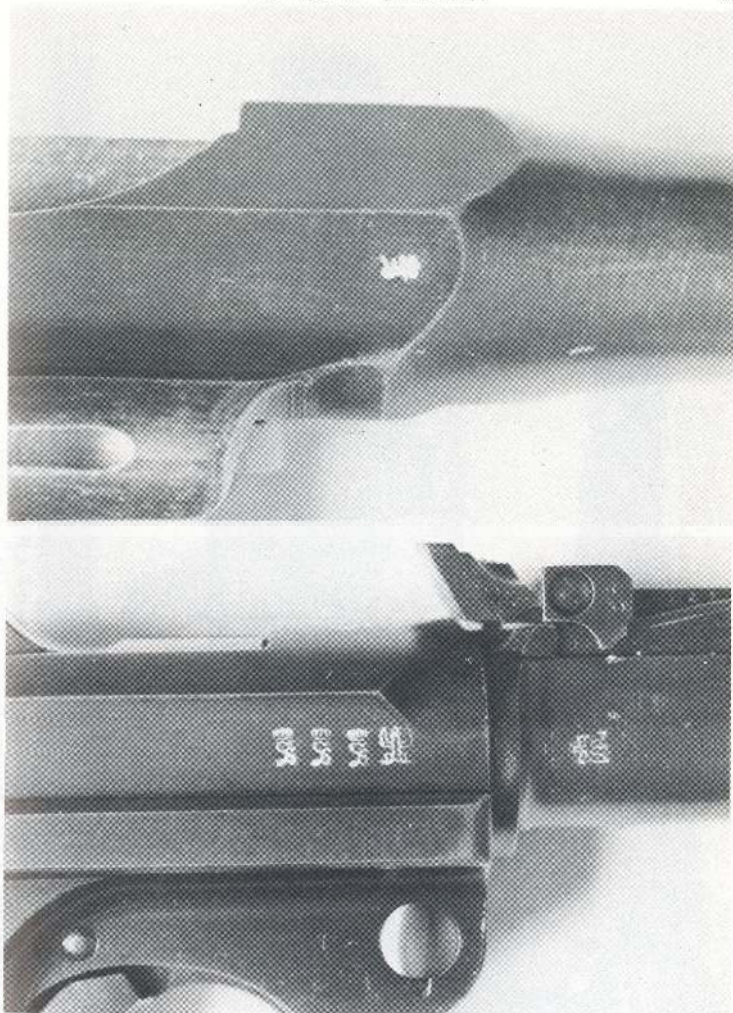


Figure 9c. Receiver proofs: top, M1896/16; bottom, 1915 dated Lange P 08.

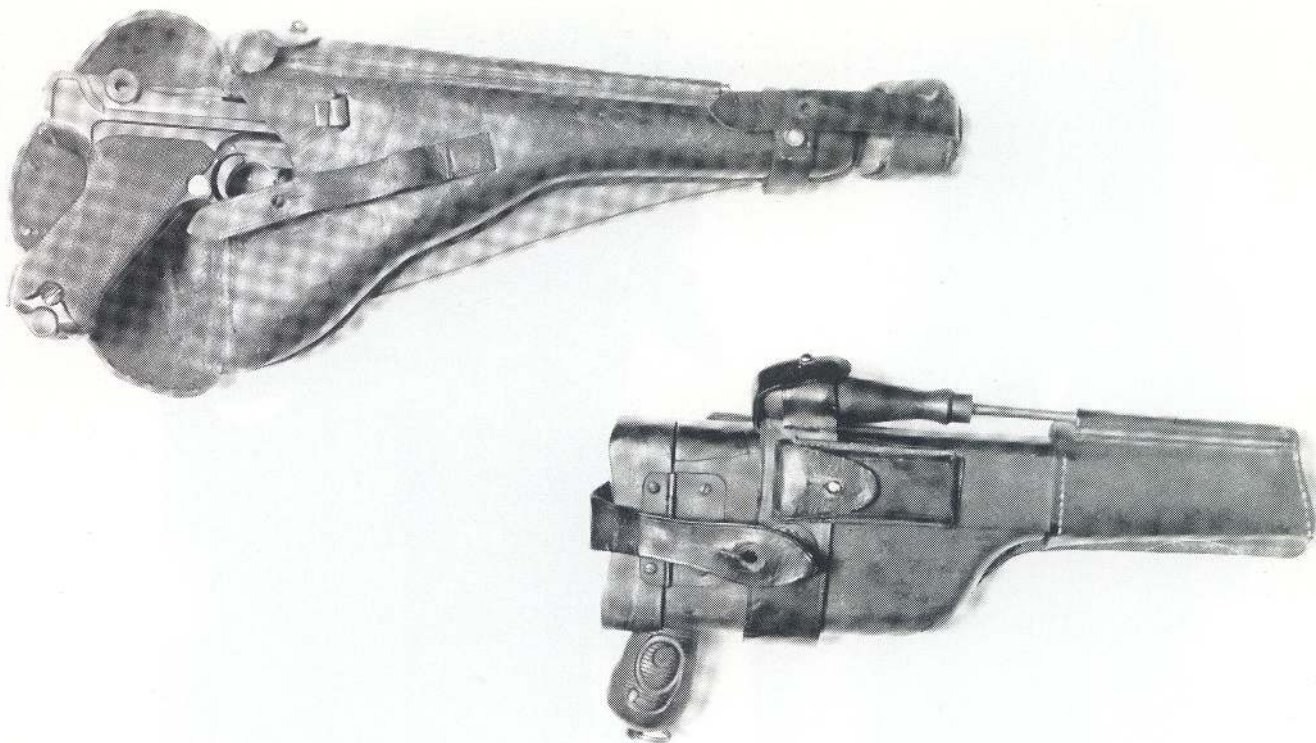


Figure 9d. Leather holster attached to Lange P 08 shoulder stock and hollow wooden holster stock with harness for the M1896/16. This harness is manufacturer marked G. BILLEP SPANAU 1916 and unit marked F.A.R. 111/1 Batt. This unit marking is identified as **Feld-Artillerie-Regiment No.111, 1. Batterie.**

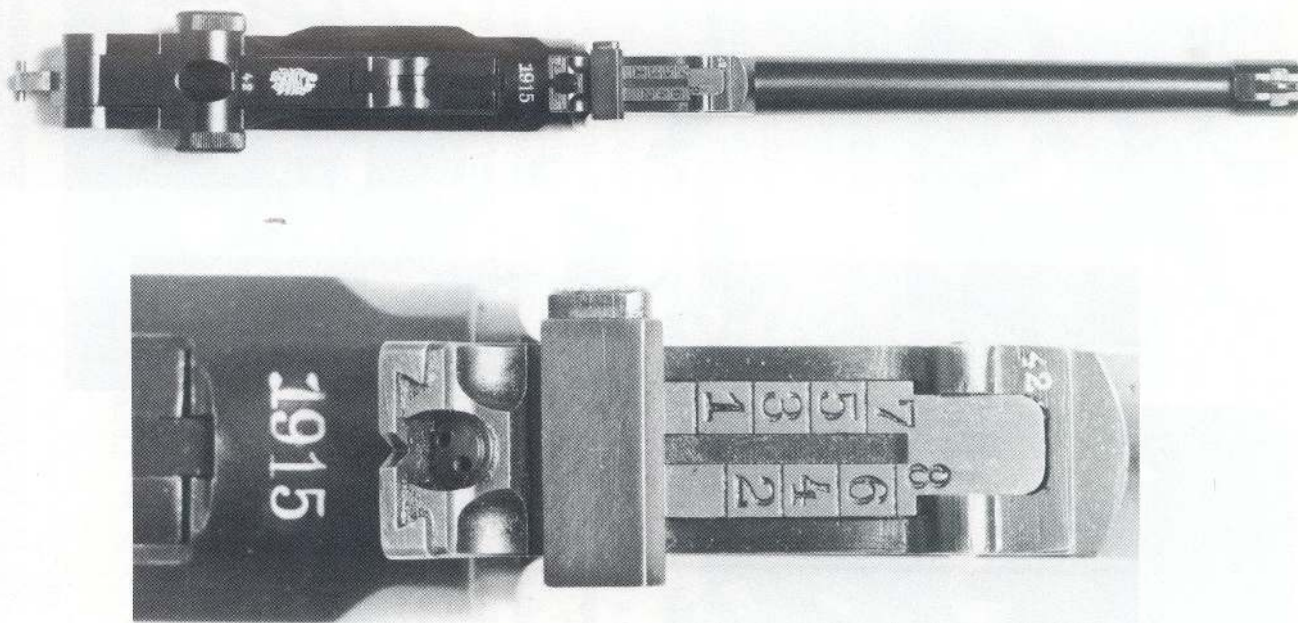


Figure 9e. Lange P08 showing the top view and details of the fine tuned 8 position rear sight. A 1917 dated military manual states that the "long barreled Parabellum, the rear sight of which is graduated to 800 meters, makes a formidable weapon for close combat, assault sorties and other special duties especially when equipped with the trommel magazine."



Füllen des Magazins.

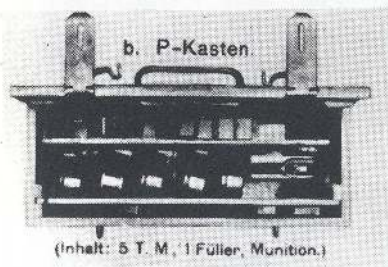


Figure 9f. Photographs from a 1917 dated German military manual on the Lange P 08 and drum or trommel magazine.



b. Zusammensetzen der Pistole.
(Aufschieben des Griffstücks auf die Hülse)



sight mounted on it, with stock lug and hold open, proofs on right side of receiver and military style serial number placement.

Var. Erfurt: Chamber dated, 1914, crown Erfurt toggle and military inspection stamps on all parts. Est. Prod. 25,000 fairly rare.

Var. DWM: Chamber dated 1914-18, and DWM toggle. Est. Prod. 180,000.

The Lange P 08 was adapted in 1913 (Walter 1977, p. 90) and manufacture commenced by the Prussian Royal Arsenal at Erfurt and by Deutsche Waffen u. Munitionsfabriken in 1914. Manufacture ceased by Erfurt in late 1914 and continued at DWM until 1918. Dates, serial ranges and production are in Table 1. About 205,000 were procured for the Army.


A 1914 commercial¹⁰ version of the Lange P 08, s.n. 73396, was recently discovered (Morris, 1980, p. 26). The commercial version of the Lange P 08 may have preceded the military version and been the source of test pieces on which the 1913 adaption was based.

The long barrelled military P 08s were issued with a shoulder stock, holster, tool, cleaning rod and later a 32 round drum magazine (trommel magazine) and drum loading tool. The combination of pistol, stock and drum magazine formed a formidable source of mobile close range fire power and its success led to the development of the first submachine gun, MP181, later in the war.

The Lange P 08 was issued to artillerymen, airmen, machine gun units and others. According to Walter (1977 p. 27) many were withdrawn from the artillery and reissued to the Navy's gunboat crews towards the end of the war.

Trommel Magazine (t.m.),
capacity 32 rounds, Fig. 9a., f.,

Cal. 9mm P.

Military Stamp: $\frac{B}{N}$ on top and bottom  on top left side of magazine

¹⁰ According to Kenyon (p. 122) the 1914 Commercial was actually manufactured in 1913.

Var.¹¹ 1st issue with sliding winding lever.

Var.¹¹ 2nd issue with folding winding lever.

The trommel magazine (also called snail drum) was manufactured by several subcontractors through DWM in 1917 and 1918. According to information presented by E. Sayre in **AUTO MAG** (Vol XIII p. 124) known serials range from 2114 to 708947. It is estimated that over 725,000 were procured mostly for use with the Lange P 08. A few thousand were issued for the Bergman MP181 submachine gun. This submachine gun was introduced at the war's end and only two to three thousand were procured (Wilson p. 272). According to a 1917 dated military manual the t.m.'s were issued in wooden ammunition boxes each containing 5 trommel magazines, a loading tool and ammunition, Figure 9f. It is stated in the above manual: "The t.m. can be used on the long and short barreled Parabellums. The higher performance achieved with the long barreled Parabellum, the rear sight of which is graduated to 800 meters, makes it a formidable weapon for close combat, assault sorties and other special duties, especially when equipped with the trommel magazine."

M1896/16 MAUSER RED 9 Fig. 9

Cal. 9mm P

Military Stamp:



on right side of chamber and some have



on front of magazine housing

Commercial Proof: Crown U

Distinguishing Characteristics: Red 9 on grips, NS-new safety, tangent rear sight marked 50-500. Rougher fit and finish than earlier Mauser pistols.

The M1896/16 Mauser was manufactured by Waffenfabrik Mauser at Oberndorf from 1916-18 for the German Army. One hundred fifty

¹¹ Sayre (**AUTO MAG** Vol. XIII P. 124) lists a number of additional variations.

thousand were contracted for, and about 140 thousand were delivered by the end of the war. Serial numbers range from near 1 to over 140,000. A 9 was marked in the grips and filled with red paint to distinguish it from the 7.63 mm broomhandles already in service. Judging from variations in size and style of this 9, it was likely done at arsenals or regimental armourers and not at the factory. Collectors have termed the M1896/16 the Red 9. They were issued with shoulder stock-holster, leather harness and cleaning rod, mostly to machine gun units and artillery crews. Imperial Naval stamped holsters for the broomhandle have been reported.


Some M1896/16 have been observed without military stamps and many pistols in the 36000-38000 serial range are both without military stamps and Red 9 grips (**AUTO MAG** Vol. XIII p. 212). These may be commercial versions of the M1896/16 intended for officer self purchase. See Appendix A, wartime commercial pistols and Figure 31.

Military serials reported: 555, 1015, 3957, 5524, 22490, 26907, 38638, 49374, 51845, 54472, 70495, 91558, 93875, 99082, 109161, 135127.

Reported without military stamps: pistols in the 36000-38000 range, 126008, 139358, 140649.

M1896/12 MAUSER

Cal. 7.63 mm Mauser

Military Stamp:  on right side of chamber

Commercial Proof: Crown/U

Distinguishing Characteristics: NS or new safety, tangent rear sight marked 50-1000, interspersed in serial range 290,090 to 433,900 (Breathed p. 124).

Many of these wartime commercial broomhandles bear military inspection stamps and many of the remainder were probably routed to self purchase by individuals in the military. About 50,000 bear military inspection stamps and were officially procured.

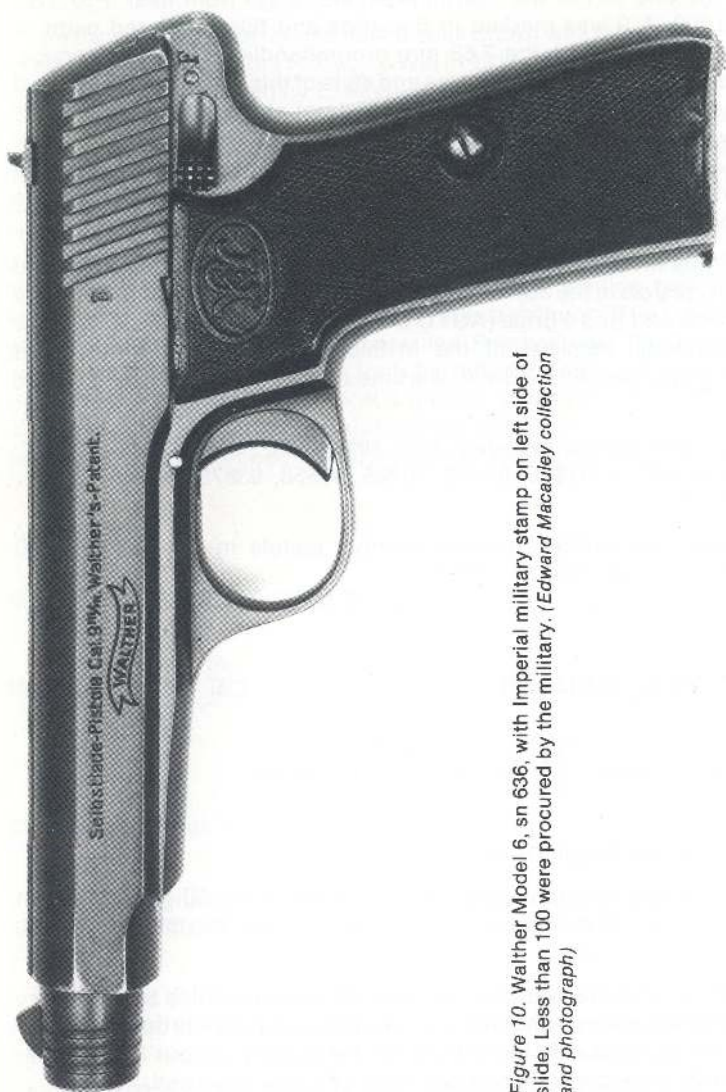


Figure 10. Walther Model 6, sn 636, with Imperial military stamp on left side of slide. Less than 100 were procured by the military. (Edward Macauley collection and photograph)

Military serials reported: 304021, 314765, 338196, 392194, 396452, 397674, 406731, 409047, 428420.

M6 WALTHER Fig. 10

Cal. 9mm P.

Military Stamp:



Commercial Proof: Crown/N

The Walther Model 6 looks like an enlarged version of the Model 4 (except ejection is to the right) and like the Model 4 it has an unlocked breech. Serial numbers range from approximately 1-2000 and about 2,000 were produced in 1915-17 by Carl Walther Waffenfabrik at Zella St. Blasii. It was specifically developed for military use; however, few were procured because the military didn't consider its unlocked action adequate for the 9mm Parabellum loading. Only two in the 600 s.n. range have been reported with military stamps and military procurement is estimated at less than 100. This is the rare WWI military.

Military serials reported: 636 and 682.

M4 WALTHER Fig. 11

Cal. 7.65mm

Military Stamp:



located behind ejection port or on left trigger guard.

Commercial Proof: Crown/N

Distinguishing Characteristics: Left hand ejection.




Walther started production of the Model 4 in 1910 and it ceased at the end of the war with a total production of about 275,000. Data indicates the serials may be a continuation of the Model 3 range.

They start at about 30000 and range up to 275000 with a few odd serials in the 300000 and 400000 range. The latter serials may represent post war production. Military procurement probably started in 1915 and ended in 1918. Over 75000 were procured mostly for staff officers and reserves.

Military serials reported: 50628, 64112, 65149, 65411, 70585, 73492, 78886, 85272, 95573, 108892, 123578.

1913 SAUER Fig. 11

Cal 7.65mm

Military Stamp:  or  or  on right frame and some

have  on trigger guard. Note, this is the same

eagle stamp as found on the Erfurt military P 08. See Figure 6c.



Commercial Proof: Crown/N

Production of the 1913 Sauer started in 1913 at J.P. Sauer u. Sohn, Suhl and ended in 1930 with a total production of about 175,000. Known serials range from 3463-166292. Wartime production was about 100,000 and of these it is estimated that less than 10,000 were officially produced. It is one of the most compact and finest of the wartime pocket pistols and those with military stamps are fairly rare.

Military serials reported: 49778, 50837, 81085, 84344, 85467.

07 DREYSE Fig. 11

Cal. 7.65mm

Military Stamp:  or  or  located above ejection port.

Commercial Proof: Crown/N

The 1907 Dreyse was produced from 1907-1915¹² at Rheinische



¹² Some references (*AUTO MAG*, Vol. X p. 11) indicate the 07 Dreyse was manufactured to 1918, considering the high production this may be the case.

Metallwaren u. Maschinenfabrik (shortened to Rheinmetall), Sommerda. Serials range from about 1-250000. About 250,000 were produced and about 80000 of the wartime production were officially procured. A sturdy and reliable pistol, some bear police markings and a 1943 dated Nazi police equipment manual indicates some remained in police service during the Nazi era. See pages 86 and 118.

Military serials reported: 113324, 117820, 132611, 134406, 140000, 148279, 174469, 190775.

FL SELBSTLADER Fig. 11

Cal. 7.65mm

Military Stamp:  or  on left frame.



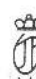

Commercial Proof: Crown/N

The FL Selbstlader was produced by Langenhan Gewehre und Fahrradfabrik at Zella-Mehlis from 1915-1918. Serials range from about 1-85000. Most of the 85,000 produced bear military stamps. A single screw holds a yoke that retains the slide to the breech block. If this screw works out and the yoke rotates upward the breech block could fly into the face of the shooter, however the probability is somewhat remote.

Military serials reported: 2856, 5122, 10003, 20366, 32470, 42087, 47502, 55223, 84134.

BEHOLLA Fig. 11b

Cal. 7.65mm

Military Stamp:  or  or  on left frame and some have  on trigger guard.

Commercial Proof: Crown/N

Manufacture of the Beholla started in 1915 at Becker and Hollander



Figure 11a. Imperial military issue (stamped) 7.65 caliber pistols: top to bottom, left row, 1913 Sauer, 1914 Mauser Imperial Army, 07 Dreyse; right row, FL Selbstlader, M4 Walther and Jäger.



Figure 11b. Imperial military issue (stamped) Menta (top) and Beholla (bottom) 7.65 caliber pistols.



Figure 11c. 1914 Mauser Imperial variations: top, Imperial Army issue with military stamp near rear sight and "Prussian eagle" on trigger guard; bottom, wartime commercial model with military stamp near rear sight.

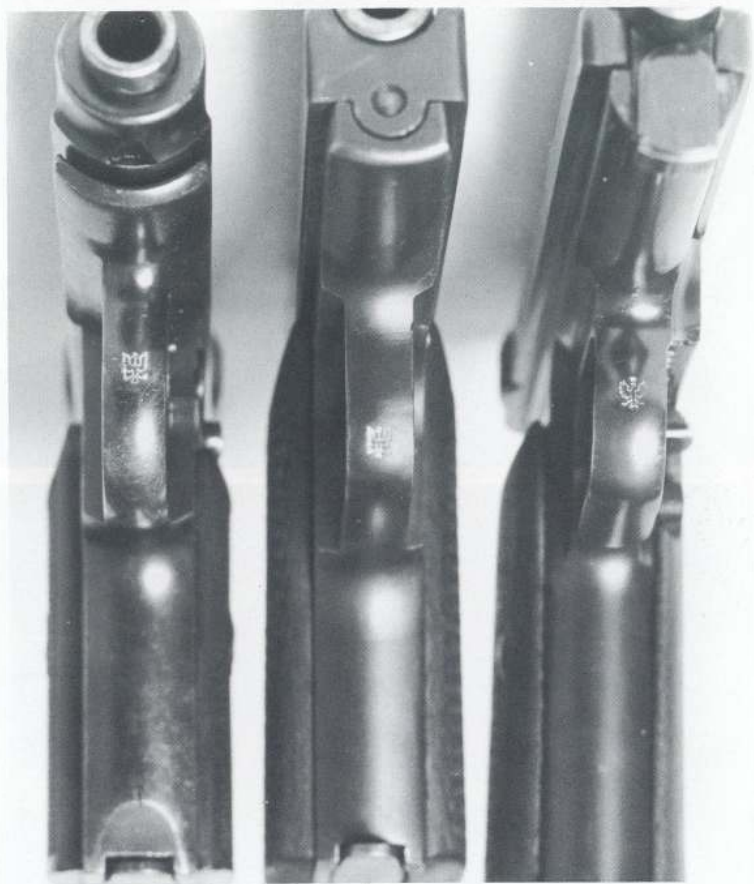


Figure 11d. Trigger guard eagles (military proofs) on Imperial 7.65 caliber pistols. Left to right, 1913 Sauer, Beholla and 1914 Mauser. The proof on the Sauer and Beholla is the same as that found on the Erfurt military Luger (Figure 6c) while that found on the 1914 Mauser is unique, Pender (p. 116) refers to these as Prussian eagles.

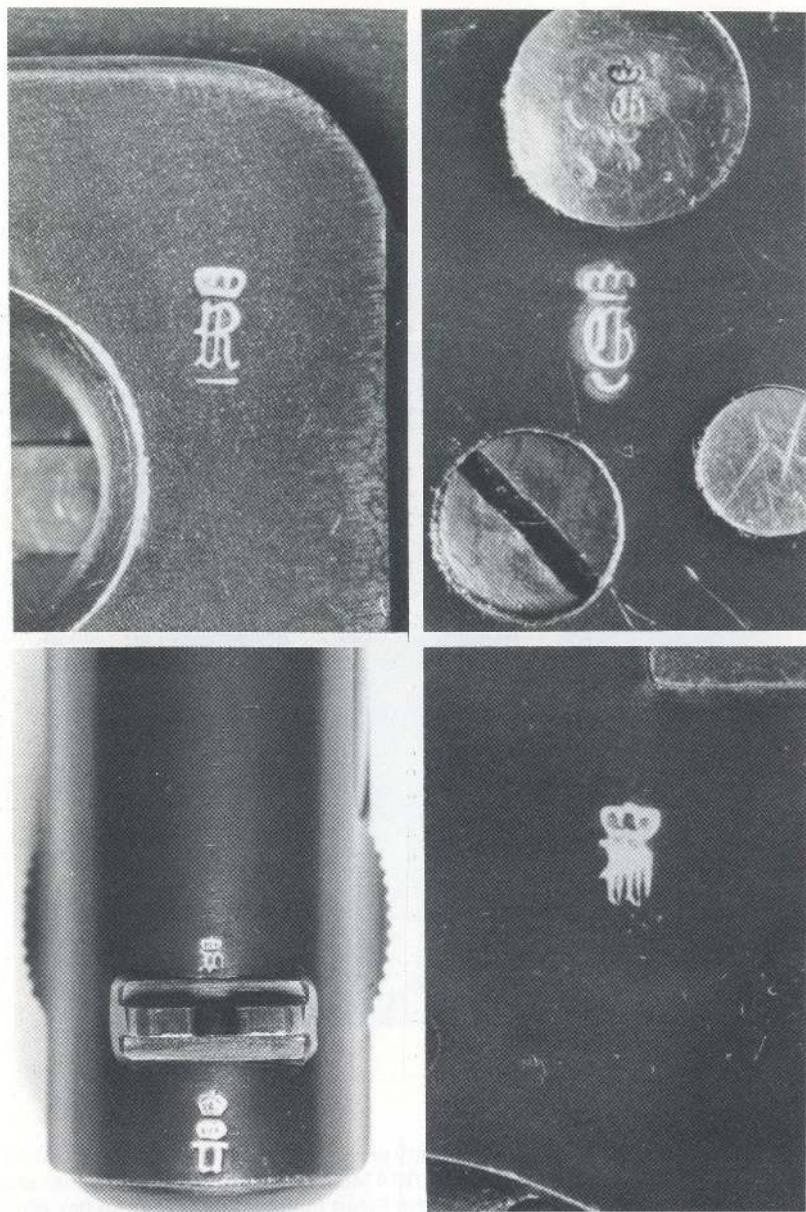


Figure 11e. Imperial military stamps: left to right; top, 07 Dreyse, Jäger; bottom, 1914 Mauser, FL Selbstlader.

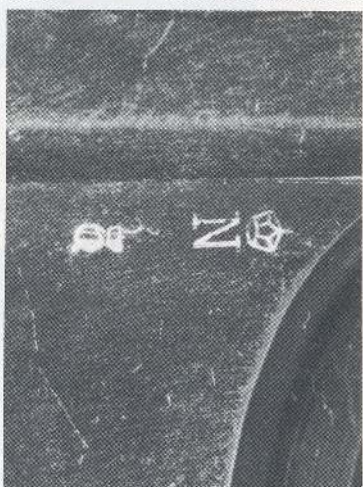


Figure 11f. Imperial military stamps; top, Walther #4 also note fouled anchor on trigger guard; bottom, left to right, Menta, 1913 Sauer. With the exception of the military issue Lugers and the 1908 Bayard, military issue pistols also bore commercial proofs, crown/U or crown/N, as well as military stamps.




Figure 11g. Holsters for Imperial issue 7.65 caliber pistols: right to left, 07 Dreyse, M4 Walther, and 1900 Browning. An inscription on the 1900 Browning holster reads Rendsburg in Holstein, a town and province in Northern Germany near Denmark.

in Suhl. Serials range from about 1-45000. About 45,000 were produced and most of these bear military stamps.

Military serials reported: 360, 774, 5492, 16064, 19597, 25545, 27397, 30003, 40094.

MENTA Fig. 11b., 11f.

Cal. 7.65mm

Military Stamp:  located left frame.





Commercial Proof: Crown/N

This is basically the same pistol as the Beholla except that it was produced by August Menz at Suhl. Serials range from about 1-15000. Less than 15,000 were produced and only two of these in the 10,000 serial range are known to have military stamps. Procurement is estimated to be less than 1000. This same pistol was also manufactured as the Leonhardt and the Stenda, neither of which are known to bear military stamps.

Military stamps reported: 10567, 10693

1914 MAUSER Fig. 11

Cal. 7.65mm

Military Stamp:  or  or  located near rear sight and a very few of the army issue have  on the trigger guard, Figure 11d.

Commercial Proof: Crown/U

Var. Wartime Commercial: large banner on side plate, no markings on right side of gun, found in commercial serial range 39784-70532 (Pender p. 112).

Var. Imperial Army issue: with and without a large banner on sideplate, Mauser-7.65 on right side, serial range 73613-177717 (Pender p. 112).

Mauser started production of the model 1914 in early 1914. The wartime commercial variation was produced in late 1914-1915 while the Imperial Army issue was produced under contract from 1916-1918. Some of the wartime commercial variation and all of the Imperial Army issue bear military stamps. Military procurement was over 100000. The wartime commercial variation and those with the so called Prussian eagle on the trigger guard should be considered rare.

Military serials reported:

Wartime commercial: 45682, 54646, 70532

Army issue: 73613, 79779, 86297, 89897, 102991, 105004, 107030, 109054, 122020, 126290, 136595, 138455, 138800, 145801, 147563, 164774, 172190, 177059, 177243, 177717

JÄGER Fig. 11

Cal. 7.65mm

Military Stamp:



located on the left frame and also on the large frame pin.

Commercial Proof: Crown/N

The Jäger was the first production pistol made mostly from metal stampings. Serials range from about 1-12000. About 12,000 were manufactured at Jäger and Company, Suhl between 1914 and 1917. Less than a few thousand of these were procured. The Imperial Military Jäger is a rare pistol.

Military serials reported: 9005, 9268.

GERMAN MILITARY PISTOLS

Belgium Manufacture

1900 BROWNING Fig. 12., 11f. Cal. 7.65mm

Military Stamp: None reported; however, some have German (Feuer and Sicher) safety markings and some of these bear the 1920 Weimar stamp indicating rework of a WWI military.

About a million model 1900 Brownings were manufactured by Fabrique Nationale d'Armes de Guerre in Herstal, Belgium from 1900 to 1912. Some have German safety markings and were likely made for a German military contract. Probably several thousand were procured. Some of these have German police markings. *

This pistol was procured by the Belgium army as an officers' weapon and for the calvary and gendarmie (Walters, 1977 p. 20). Some of these Belgium military pistols were undoubtedly captured and used or reissued by the German military during its rapid advance through Belgium in 1914 or during its four year occupation of Belgium.

It was with a 1900 Browning that Archduke Franz Ferdinand of Austria was assassinated in 1914 (Wilson, p. 20).¹³ *

Reported with Feuer and Sicher safety workings: 161948, 378067

1903 BROWNING Fig. 12 9mm Browning Long

Military Stamp: None reported

About 100,000 model 1903 Brownings were manufactured between 1903 and 1914. Manufacture continued until 1923. This pistol was adapted by the Belgium military in 1904 and some of these were undoubtedly captured and used by the German military. This is the only pistol made before 1920 that chambers the 9mm Browning Long ammunition and this cartridge was manufactured at the Imperial Prussian arsenal at Spandau in 1916 (Wilson, p. 238).

¹³ Recent research by Karl Schafer (Germany) contradicts reports that the assassin used a 1900 Browning (Auto Mag XV, p. 48). Official Austrian documents indicate the bullets from the victim's bodies were 9mm Short and four 1910 Brownings (sn 19074, 19075, 19120, 19126) in caliber 9mm Short were taken from the conspirators. These four pistols were lost from storage in Austria during the chaos of the last war days in 1945. *




Figure 12. Pistols captured or manufactured in Belgium by or for the Imperial German military: top to bottom, 1903 Browning, 1900 Browning with German (Feuer and Sicher) safety markings and 1908 Bayard with Imperial German military stamps located on the right side of the frame and slide (see inset).

Mathews (Vol. I, p. 174) reports that a very limited number of these pistols were manufactured during World War I in 9mm Browning Short supposedly under German supervision during the occupation.

M1908 BAYARD Fig. 12

Cal. 7.65mm

Military Stamp:  and  located right forward portion of the **slide and frame.**

Commercial Proof: None

The diminutive M1908 Bayard was manufactured by Anc. Etablissements Pieper, at Herstal, Belgium under German supervision during the occupation of Belgium. Almost all of the pistols in the serial range 107037 to 199065 have German military stamps and no Belgium proofs. The eagle portion of the military stamp is the same as that found on the Imperial DWM P 08, Figure 6c. About 100,000 were procured.

Military serials reported: 107037, 112798, 115516, 131889, 144450,
161290, 171237, 174264, 182695, 182744,
188678, 199065

AUSTRIAN-HUNGARIAN EMPIRE

Military History

Mobilized Forces 7.8 million

Casualties 7.0 million

In 1914 the Dual Empire was a loose assortment of Germans, Hungarians, Slavs, Poles and Italians held together by the iron hand of the Hapsburg (Austrian) throne. Rising nationalism among its slavic minorities was a constant source of conflict both within and without the Empire. The assassination¹⁴ of the Hapsburg prince by a member of the Black Hand (a Serbian nationalist organization) triggered the Great War.

There were three armies in the empire: Landwehr (Austrian K.K. Armee) from the German and Czech population, Imperial (K. und K.¹⁵ regular force) and Honved (Hungarian Militia). Pistols for these armies were made at the two great arms factories of the Dual Empire: Österreichische Waffenfabrik-Ges. (Steyr) in Steyr, Austria and Fegyvergyar in Budapest, Hungary (Wilson, p. 138).

The Empire started the war with an attack on small, tough Serbia, but after hard bitter fighting was forced to withdraw when Russia launched a powerful attack on Galicia (northeast province of Austria-Hungary) resulting in the decimation of the Empire's armies and subsequent Russian occupation of Galicia.

In 1915 and 16 the Russian armies concentrated their attacks on Austria-Hungary to knock it out of the war and great battles raged across Russia and the Empire. With German and Bulgarian help, the Empire crushed and occupied Serbia and Montenegro in 1915 and Rumania in 1916. In 1917 with the help of German advisors and poison gas and in spite of a rugged alpine setting, she inflicted 750 thousand casualties and a major defeat on the Italians at the fierce battle of Caporetto.

¹⁴ Recent research by Karl Schafer (Germany) contradicts reports that the assassin used a 1900 Browning (Auto Mag XV, p. 48). Official Austrian documents indicate the bullets from the victim's bodies were 9mm Short and four 1910 Brownings (sn 19074, 19075, 19120, 19126) in caliber 9mm Short were taken from the conspirators. These four pistols were lost from storage in Austria during the chaos of the last war days in 1945.

¹⁵ Kaiserliche und Königliche Armee (Imperial and Royal)

In 1918 Austria-Hungary was forced out of the war suffering defeats by the Italians at Vittorio Veneto and in Greece and Serbia by a combined Serbian, French, British and Greek force. Near the end of and after the war the Hapsburg dynasty lost their hold on the empire and it fragmented into the nations of Austria, Hungary, Czechoslovakia, Poland, and Yugoslavia.



Figure 13a. Imperial Austria-Hungarian military pistols: top to bottom, 1912 Steyr Hahn Romanian contract-captured, 1912 Steyr Hahn dated 1914, M7 Roth Steyr-Austrian manufacture and M7 Roth Steyr-Hungarian manufacture.

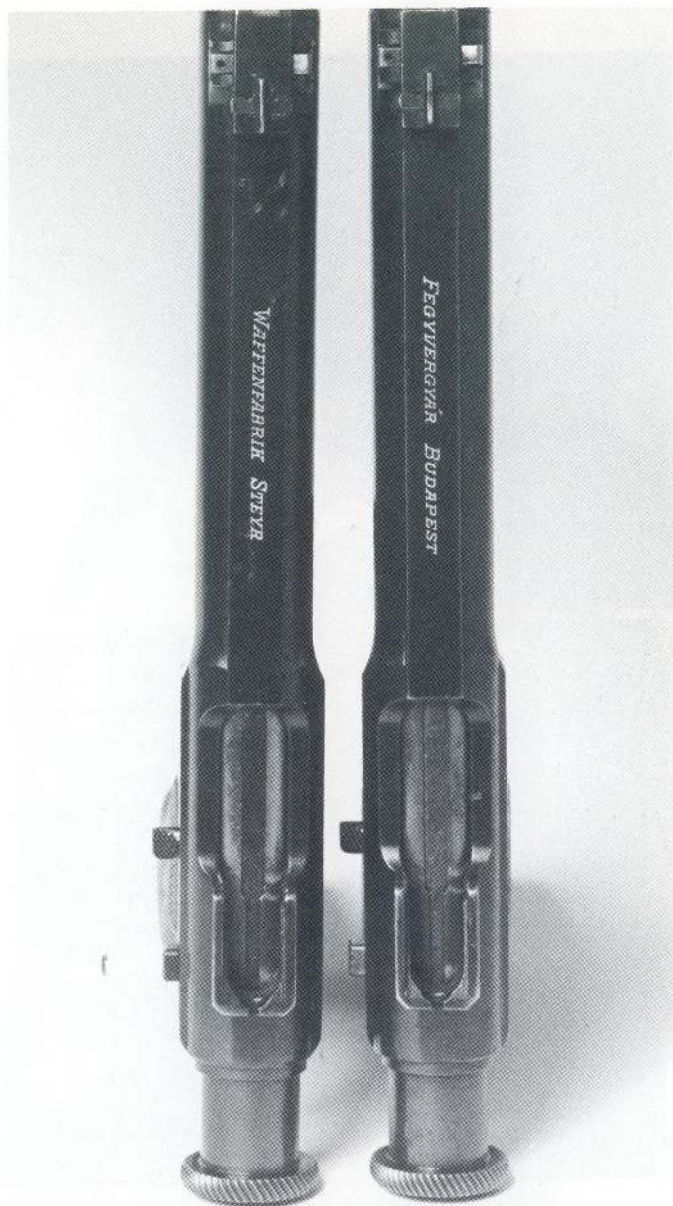


Figure 13b. M7 Roth Steyr showing Austrian-Steyr manufacture and Hungarian-Fegyvergyar manufacture.



Figure 13c. Austrian-Hungarian military stamps: top, Steyr Hahn dated 1914; left, M7 Roth Steyr-Hungarian manufacture dated 1912; right, M7 Roth Steyr-Austrian manufacture dated 1912.



Figure 13d. Issue holster for the Steyr Hahn dated 1915, shown with box of FN manufactured ammunition and loaded chargers. Also reported as a Roth Steyr holster.

Austria-Hungary

Military Pistols

ROTH STEYR Fig. 13

Cal. 8mm Roth Steyr

Military Stamp: LW or W-n  + Date located on rear frame below bolt.

Var. Austrian: Marked "WAFFENFABRIK STEYR" along top strap of pistol, manufactured at Österreichische Waffenfabrik-Ges. in Steyr, Austria from 1908-1913. Estimated procurment: 60,000.

Var. Hungarian: Marked "FEGYVERGYAR BUDAPEST" along top strap of pistol. About 30,000 of these were produced at Fegyvergyar in Budapest, Hungary from 1911 to 1914.

The M7 Roth Steyr was adapted in 1907 and initially issued to the Imperial and Royal (Kaiserliche und Königliche: K. und K.) cavalry and flying core of the Dual Empire (Wilson p. 137, 140). This is the first instance of the adaption of a semi-automatic pistol by the land army of a major power. Its design incorporates a partial double action trigger pull reportedly to make it safe for firing from horseback. Wartime photographs indicate later issue to machine gun crews and others. Fegyvergyar manufactured pistols are accepted with the W-n stamp. Serial numbers reported range from 51-31706 and most were manufactured between 1911-1914. Steyr manufactured pistols are accepted with the W-n or rarely the LW stamp. Serial numbers reported range from 223-51683 and most were manufactured between 1909-1913. Both variations are sometimes found with regimental markings on the right grip disk. A very few of both variations are found with dates after 1914, up to 1932. These are most likely reworks of earlier manufactured pistols or were made up from spare parts.

Use of the M7 Roth Steyr during World War II is reported (Mathews, Vol. I, p. 262). Johnson (correspondance 1980) reports one captured from a German sergeant late in World War II. He has the pistol and capture papers.


Serials and dates reported Fegyvergyar manufacture, W-n acceptance stamp: 51(12), 10xx(11), 6439(12), 8993(12), 15071-(12), 16862(12), 24529(32), 25666(12), 31706(14).

Serials and dates reported Steyr manufacture, W-n acceptance stamp: 223(9), 964(9), 2194(9), 5192(9), 9977(9), 17809(9), 22136(9), 37383(10), 38213(10), 40947(10), 41467(10), 41499(10), 46844(11), 51683(13).

Serials and dates reported Steyr manufacture, LW acceptance stamp: 48546(12), 49849(13).

1912 STEYR HAHN Fig. 13

Cal. 9mm Steyr

Military Stamp: W-n  + Date located on right frame above trigger guard.

Manufactured by Österreichische Waffenfabrik at Steyr, Austria for the Landwehr (K.K. or Austrian Army) from 1912 to 1918. Manufacturing continued into 1919 and military reworked pistols dated to 1936 have been observed. Later in the war they were issued to the Imperial and Royal Army (K. und K.) (Wilson p. 138, 141). It was called the hammer model to distinguish it from the hammerless Roth Steyr. This reliable and robust pistol was used by the Balkan States through World War II. The serials of these pistols are in alphabetical blocks of 10,000. Reported dates and serial numbers indicate some overlap, particularly in 1918 and 1919. It is reported that by early 1918 the z block had been reached and by the end of the war the f block had been reached. Military procurement was about 300000.

1912 STEYR HAHN ROMANIAN captured

Fig. 13

Cal. 9mm Steyr

Distinguishing Features: Romanian crest over 1912 date on left forward side of slide.

Manufactured during 1912-1914 by Steyr for the Romanian military. During the war Romania was rapidly overrun and captured pistols were used by the Austria-Hungarian army. Both captured Romanian

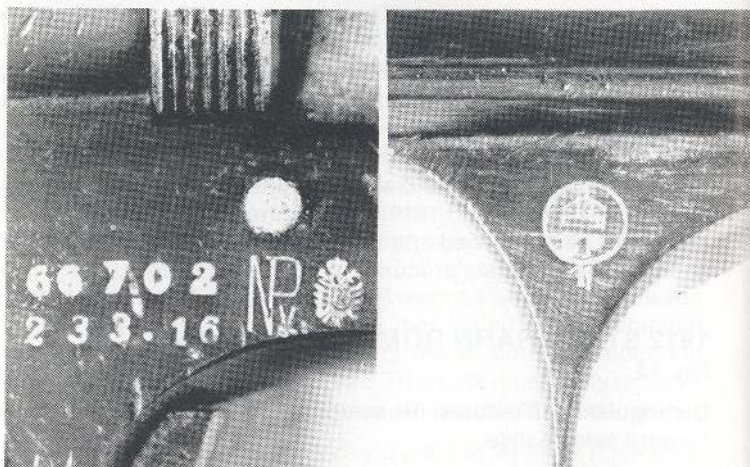


Figure 14. Austrian-Hungarian pistols: top, 1908 Steyr with crown/N German proofs, probably reworked in 1939 after the Anschluss and before the change to the eagle/N proof in April 1940; bottom-1912 Frommer Stop with wartime 1916 commercial proofs.

and Austrian issue Steyr Hahns were reworked (converted to 9mm P) for the Nazi police after the 1938 Anschluss.

Serials and dates reported: 1106 star (1913), 1840 star (1913), 6654d (1914).

1912 FROMMER STOP Fig. 14 Cal. 7.65 or 9mm K

Military Stamp: BP-Hungarian Crest and two digit date located on the left frame or trigger guard web.

Manufactured at Fegyvergyar, Budapest for the Hungarian Militia (Honved) from 1912-18. Many thousands were manufactured. This pistol's design employs an overly complicated locked breech rotating bolt action for the low powered 7.65mm cartridge and is somewhat fragile.

M1896/12 MAUSER AUSTRIAN Fig. 15 Cal. 7.63mm Mauser

Military Stamp: W-n  + Date located right side over chamber.

German Commercial Proof: Crown U

Manufactured by Waffenfabrik Mauser at Oberndorf, Germany in 1916-18 for the Austria Hungarian military. These are found in the serial range 366,000 to 409,000 (Breathed, p. 124) and bear German commercial and military proofs. Shoulder stock holsters with iron matching the pistol and Austrian military stamps have been reported. A few thousand were procured.

Serials and dates reported: 39625(17), 400943(17), 404682(17), 409047(17)

1908 STEYR Fig. 14 Cal. 7.65mm

Military Stamp: None observed, however WWI military and police use reported (Hogg, p. 1.04) and a 1916 WWI LW (Landwehr) marked 1908 Steyr holster is reported (Carlson).

From 1909-1918 about 60,000 of the model 1908 Steyr were manufactured by Österreichische Waffenfabrik-Gesellschaft located at Steyr, Austria. (Serial numbers observed run from near 1 to 58316P). In the author's opinion it's manufacture continued through World War I but postwar manufacture is somewhat questionable (although Mathews, Vol. I, p. 285 indicates manufacture to 1939). Those the author has observed with post 1918 dates appear to be reworks of pre-1918 manufactured pistols. At least a few thousand were probably procured for the military but apparently not stamped.* Some were modified and reworked (heavier slide, added extractor, etc.) in 1934 for the Austrian police forces which were integrated into the Nazi police after the 1938 Anschluss when Austria became part of greater Germany (Wotka, correspondence 1979). These 1908/34 Steyrs are listed in the 1943 dated Nazi police manual.

* Too late to include in text, 1908 Steyr, 7.65mm cal., manufactured in 1911, Austro-Hungarian military stamp: LW Austrian Eagle 14, on left side of frame. Reported by Vic Glogovac in AUTO MAG Vol. XV Oct. 1982, p. 132.



Figure 15. Imperial Austria-Hungarian M1896/12 Mauser with holster stock, leather, cleaning rod, and two loaded chargers. Bottom, right receiver Austrian Hungarian 1917 dated military stamp along with German military inspection stamp (lowest).

BULGARIA**Military History**

Mobilized Forces 1.2 million

Casualties 0.27 million

In the 19th Century, Bulgaria was a vassal State to the Ottoman Empire. In 1912, during the first Balkan War, Bulgaria defeated the Turkish army in a series of vicious battles and won complete independence and gained considerable territory; however, during the Second Balkan War (1913) Serbia, Romania, Greece and Turkey defeated Bulgaria and forced it to give up all its territorial gains. Pistols were supplied to the Bulgarian army by the Deutsche Waffen u. Munitions Fabriken (DWM) located in Berlin, Germany.

Bulgaria joined the Central Powers in 1915 with an eye toward regaining territory lost in the Second Balkan War. It launched a strong attack on Serbia in 1915 and Rumania in 1916. These attacks coordinated with combined Austria-Hungarian and German attacks resulted in the defeat and occupation of both nations. Bulgaria defeated a joint British, French, Serbian, Greek attack through Greece in 1916 and 17; but in 1918 these same joint forces broke through the Bulgarian lines forcing her to sue for peace. As a result Bulgaria lost its outlet to the sea in Thrace.

BULGARIAN**Military Pistols****1900 BULGARIAN LUGER (4¾ inch barrel)**

Cal. 7.65mm Parabellum

Military Markings: Bulgarian Crest over chamber and safety marked in Bulgarian.

Serial range: reported in the 20000-21000 range.

1906 BULGARIAN LUGER (4¾" barrel)

Cal. 7.65mm Parabellum

Military Markings: Bulgarian Crest over chamber, extractor and safety marked in Bulgarian.

Serial range: 1-1500.

M1908 BULGARIAN LUGER (4" barrel)

Fig. 16

Cal. 9mm P

Military Markings: Bulgarian Crest over chamber, extractor and safety marked in Bulgarian.

Distinguishing Characteristics: Laynard located at bottom of rear grip strap.

Serial range: 01-5000 and 01C-5000C

From 1901-1911 these M1900, M1906, and M1908 Lugers were manufactured by Deutsche Waffen u. Munitionsfabriken (DWM) for the Bulgarian military. Less than 750 of the M1900, 1500 of the M1906 and 10,000 of the M1908 were procured. These pistols saw action in both Balkan and World Wars. Almost all of the 7.65mm variety were rebarreled to 9mm P and many bear Nazi rework stamps. All Bulgarian Lugers should be considered rare and the 1900 Model should be considered extremely rare. The Bulgarian Luger is a favorite target of the restorer and those in very good original condition are becoming a rarity, while some mint examples currently offered for sale are modern reworks.



Figure 16a. Top, Bulgarian contract Luger, 1908 variation. Note lanyard loop at bottom of grip. Bottom, M1903 Browning, Turkish contract.

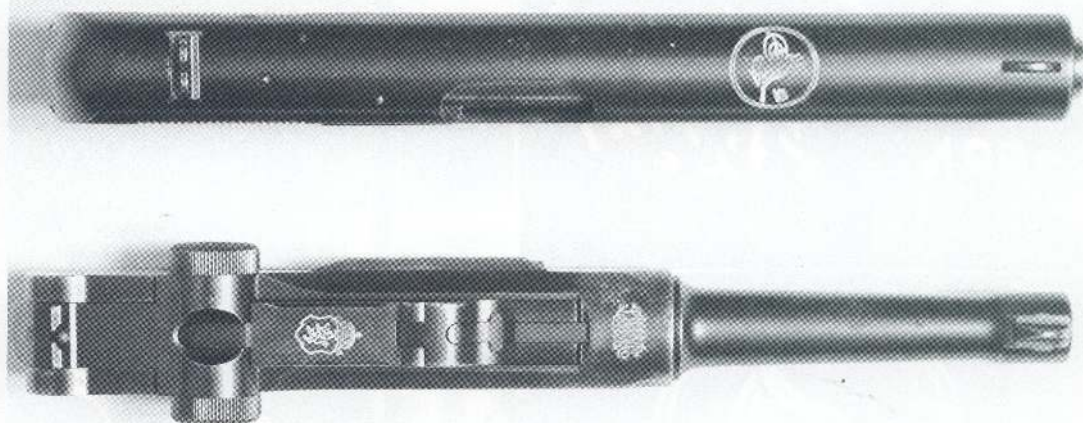


Figure 16b. Left, 1903 Browning-Turkish crest on slide. Right, 1908 Bulgarian Luger with DWM over chamber and Bulgarian crest on toggle.



Figure 16c. Left, 1908 DWM: top-Royal Bulgarian crest, bottom-Bulgarian lion acceptance stamp. Right, 1903 Browning: top-crest of Turkish Sultan Abdul Hamid II who was deposed in 1909, bottom-slide inscription meaning authority and Farsi number 7550.

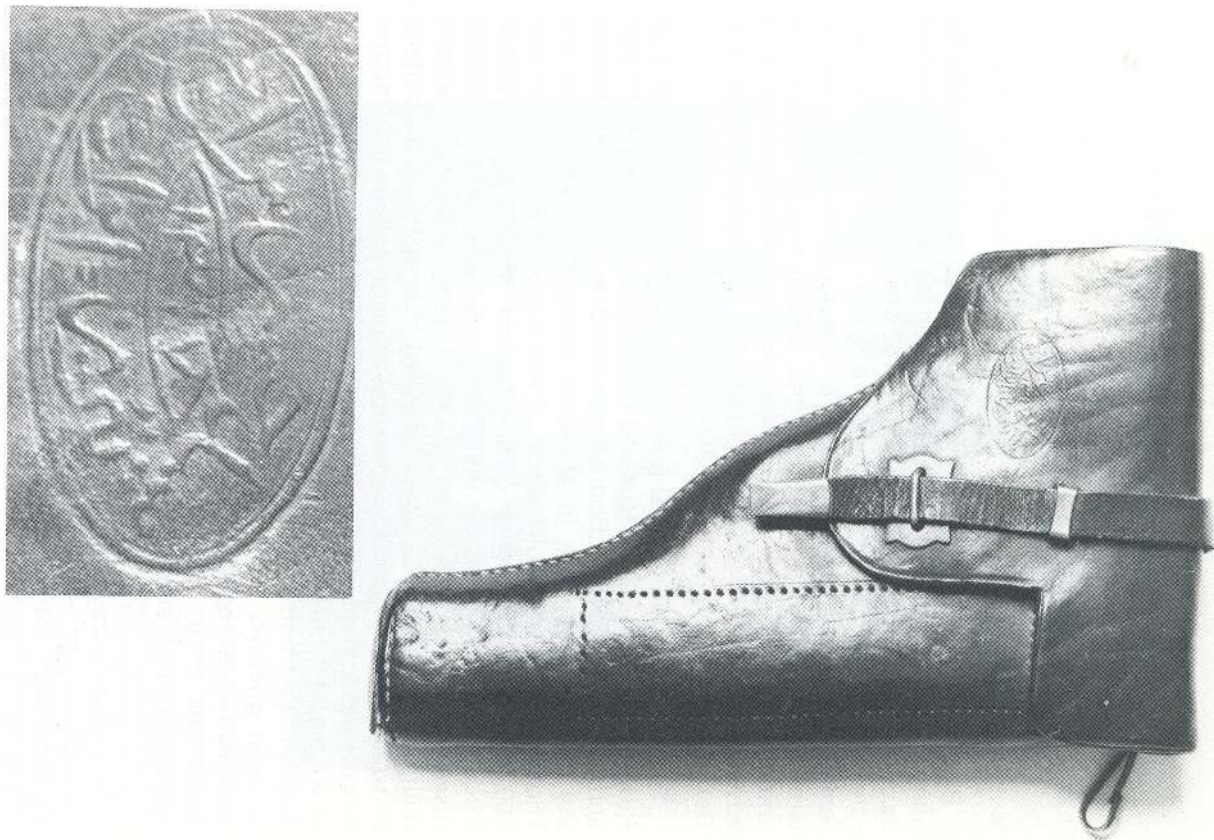


Figure 16d. Holster for the 1903 Browning Turkish contract with Farsi inscription.

OTTOMAN EMPIRE-TURKEY

Military History

Mobilized Forces 2.85 Million

Casualties .975 Million

By 1914 Turkey was but a remnant of the once powerful and far flung Ottoman (Muslem) Empire that within the last 30 years had lost its control of the Balkan states. The Turks were noted for their harsh rule and tough soldiers. They were driven from most of their remaining territory in South Central Europe by Bulgaria, Serbia, Greece and Montenegro in the first Balkan war. Germany had ambitions in the area and supplied Turkey extensively with military advisors and aid. Pistols were supplied to the Turks by Mauser in Germany and Fabrique National in Belgium.

Turkey joined the Central Powers late in 1914 with an attack on Russia through the Caucasus and with an attack on the Suez Canal across the Sinai Desert. Both attacks failed. In 1915 Britain invaded the Gallipoli Peninsula in hopes of taking the Dardanelles and knocking Turkey out of the war. It was a bloody failure with over 200,000 casualties and no gain. An attack in 1915 by the British through Mesopotamia was more successful, and in spite of initial disasters Bagdad was taken in 1917. Figure 17 shows a German military advisor to the Turks armed with the Lange P08, at the battle of Kut-Al-Amora. The most successful campaign against the Ottoman Empire was brilliantly led by the legendary T.E. Lawrence (Lawrence of Arabia). He spread the flame of revolt among the Arabs (under Turkish rule) and inflicted great losses on the Ottoman Empire through guerrilla warfare. In the face of open Arab revolt and imminent invasion of Constantinople by a joint British, French, Serb and Greek force, Turkey surrendered and subsequently lost the remainder of her empire.



Figure 17. The German and Turkish army were in close contact over 100 years, beginning in 1836 and ending in 1945. During this period military missions and military advisors were permanent in Turkey. High German officers were active in the Turkish General Staff and in further high positions of the army. Also, German officers were teachers at the war academy. The activities of the German advisors were great especially during World War I, for example, the German Field Marshall Freiherr V.D. Goltz, was commander of the 1st Turkish Army. This Army defeated the British Army in April, 1916 at the battle of Kut-Al-Amara. The above photo shows a German advisor, armed with the "Lange P 08" during this battle. (*Luger-archives Reinhard Kornmayer*)

TURKISH**Military Pistols****M1896 TURKISH MAUSER**

Cal. 7.63 Mauser

Military Markings: Crest of Turkish Sultan Abdul Hamid II and year 1896 (1314) in Farsi on the left frame panel. Parts and sight numbered in Farsi (Breathed p. 44).

About 1000 of these M1896 Mausers were manufactured at Waffenfabrik Mauser in Oberndorf, Germany in 1897. This represents the earliest military contract for a semi-automatic pistol. An extremely rare pistol.

M1903 TURKISH BROWNING Fig. 16 Cal. 9mm Brng. Long

Military Markings: Crest of Turkish Sultan Abdul Hamid II on top of slide and Farsi inscription meaning authority and Farsi number on right side of slide.

The Turkish contract 1903 Browning was manufactured by Fab. Nationale d'Armes de Guerre at Herstal, Belgium in about 1906. In any case, Sultan Abdul Hamid II was overthrown by the "Young Turks" in 1909, so it is very doubtful if any with that crest were ordered after 1909. The Farsi inscription on the right side of the slide translates into "authority" (According to Mathews Vol. III, p. 586, it means policeman which in Turkish is very similar to authority) and it is the author's opinion that they were intended for military use. It is reported that 9mm Browning Long ammunition was manufactured at the Imperial Prussian arsenal at Spandau in 1916 for the Turks (Wilson p. 238).

The following serial numbers and corresponding Farsi numbers have been recorded: s.n. 11859 Farsi 467

s.n. 33718 Farsi 5955

s.n. 36323 Farsi 6860

s.n. 37089 Farsi 7550

The Farsi numbers increase as the serial numbers increase but at a slower rate. These Farsi numbers may represent a contract serial number. If over 7550 were produced very few have reached the United States.

POST WAR GERMAN MILITARY-PARAMILITARY AND POLICE REISSUE OR REWORK OF WORLD WAR I MILITARY PISTOLS

Introduction

From the end of the war until the late 1920's was a period of turmoil for Germany, weak from lost territory and a lost war. It was threatened from the East by the Bolshivik tide and by the threat of Polish invasion in 1921 and 1926. From within, Germany was threatened by disastrous inflation, high unemployment, and a weak central government unable to control near civil war between right wing factions and the Communists. Private armies flourished, foremost of which was the tough right wing Freikorps that battled the Bolshiviks in Latvia, Estonia and other newly created nations. They also fought left wing elements and kept order within Germany. The militaristic NSDAP, under the cunning leadership of Adolf Hitler, was supported by right wing factions and thrived on national discontent. It absorbed members of the Freikorps and forged a powerful private military organization that by 1933 was more than 40 times larger than the 100 thousand man national army (Reichswehr). Although Hitler was constitutionally elected to national office, he ruthlessly used this military organization to intimidate and even murder those who opposed him. By 1933 Germany was firmly controlled by Hitler who subsequently instituted a strong brutal dictatorship and full scale rearming.

The Treaty of Versailles restricted the size of the postwar German Army, known as the Reichswehr, to 100,000 men and forbid or limited warships, military airplanes, tanks etc. This army was formed by selecting the best of the World War I veterans, many of whom were in the Freikorps in the 1919-1920 period (Dupay, p. 189 and p. 200-222). The dedicated Reichswehr circumvented the restrictions of the Treaty of Versailles and preserved the excellence of the German military. It formed the nucleus of the powerful World War II German Army.

Because of the large quantities of surplus military pistols and parts available after World War I and because of the poor financial position of the German nation, few newly manufactured pistols were procured

by the military or police in the 1920-1933 period.¹⁶ Numerous World War I military pistols were reworked and reissued for the post war military, paramilitary or police. Initially Erfurt and DWM carried out this rework program. In 1920 Simpson acquired the Erfurt Machinery and in about 1930 Mauser acquired the DWM machinery. Both carried on the rework program. A large variety of military or police stamps were used, only a small portion of which are shown here.

First pistols bearing the 1920 Reichswehr stamp will be described, then the P 08 sneaks and last the other pistols with indications of postwar reissue.

Reichswehr Pistols-1920 Stamp

The Treaty of Versailles prohibited the manufacture of pistols with barrels longer than 10cm (3.94 inch) or of caliber greater than 8mm (0.314 inch). However, these pistol restrictions did not apply to handguns reworked before 1921 and intended for the Reichswehr. Reichswehr pistols received a 1920 stamp to indicate official authorized use under the Treaty of Versailles.

7.65 caliber pistols, not in violation of Versailles, also received the 1920 stamp. This stamp may also have been used to indicate Reichswehr issue or property.

The following pistols bear the 1920 Reichswehr (Weimar military) stamp, Figure 18.

P 04 NAVY, P 08 LANGE, P 08: World War I military varieties of the Luger (DWM, Erfurt, Navy and Lange) have been observed with the 1920 stamp. Some have added military or police unit markings (Some have Prussian State police unit markings.) Weimar-M/anchor Naval stamps have been observed on a few double dated Lange P 08 retaining the 8-inch barrel.

¹⁶ Only small quantities of the following newly manufactured pistols were procured: Dated P 08 Simpson for the military, 1914 Mauser for the Navy and police, and the 1913 and 1930 Sauer, Ortgies, and Walther PP and PPK for the police.



Figure 18. World War I military pistols with the 1920 "Weimar" stamp indicating reissue to the 100,000 man post war Reichswehr; top to bottom, P 08 1914/1920, M1896/16 Mauser which retains full length barrel and tangent sight, 1900 Browning with German (Feuer and Sicher) safety markings, 1913 Sauer. The P 08 is from the collection of E. Hildebrand and the Red 9 is from the collection of K. Weir.

1896/16 RED 9 or M1896/12 MAUSER: A few World War I military broomhandles bear the 1920 stamp on the frame or barrel extension. Many of these have their barrels shortened to 3.9 inches and rear sight fixed, these may have been intended for the police. Some have police or military grip strap markings. A very few have Weimar Naval stamps.

1914 MAUSER, 1913 SAUER, 1900 BROWNING, 1908 BAYARD: These cal. 7.65mm pistols have been observed with the 1920 stamp and some have additional police or military unit markings. (1914 Mausers in the postwar serial range and the post war Ortgies are also found with the 1920 stamp.)

Lugers in the 1923 commercial serial range (s.n. 74800-96000) have been observed with a 1921 Chamber date (some have Prussian state police markings). These may represent an early attempt to conceal rearming by misapplying the 1921 date to a post 1923 manufactured pistol.¹⁷

P 08 Sneaks

In the late 1920's and early 1930's under Reichswehr and Nazi influence, secret rearming proceeded on a large scale. The Mauser or Simpson reworked P 08 with unmarked chamber and unmarked or DWM toggle and a variety of acceptance stamps and unit markings were reissued to the expanding Reichswehr, the militarized Prussian state police and paramilitary units of the Nazi Party (Figure 19). The blank chamber or toggle was intended to prevent detection of rearming in violation of the Treaty of Versailles and these pistols have been termed sneaks.

Most sneaks occur in the r, s, t, and u serial blocks with the blank toggle appearing at the beginning of the t serial block. These sneaks have the old serial number machined off the front of the frame and a new one added. Some sneaks retain the original World War I serial number and letter. Serial blocks indicate that over 50000 sneaks may have been reworked or assembled.

¹⁷ The 1920 stamp may also have been utilized to a limited extent for other than military purposes. A few pistols bearing the 1920 stamp also have the "MADE IN GERMANY" export stamp; however this may only indicate surplus of a military issue pistol to commercial use or unauthorized use of the military stamp.



Figure 19. In the 1920's and early 1930's large numbers of sneak Lugers (blank chamber and or toggle) were used by the paramilitary formations of the NSDAP: the Sturmabteilung (SA) and Schutzstaffel (SS). In 1934 the ranks of the SA numbered 4 million. Photographs from the early 1930's show groups of SS and SA men all armed with the Luger. Shown is a sneak Luger with an SA dagger (left) and SS dagger (right) and NSDAP gorget. Sneak Lugers were an important weapon of the early paramilitary formations of the Nazi party.

Of interest are the so called Riff contract P 08 sneaks. Prior to 1931 and perhaps as early as 1926 the Berber or Riff tribesmen of Morocco placed an order for a reported 2500 Lugers with DWM. The fierce Riff's saw some early success in their campaigns to rid Morocco of the Spanish, but in 1927 they were decisively defeated by a combined Spanish-French force. One report indicates the buyers defaulted on the order because of this defeat and these Lugers were transferred to Mauser in 1930 when it took over DWM equipment and stock. Another report indicates the order was placed with Mauser in 1930 and shortly there after defaulted on. In either case these Lugers are found with blank toggle and chamber (sneaks) and larger than usual parts numbers. According to Kenyon (p. 238) they are found in the 8000t serial range and Walter (1977 p. 116) states they are found in the u serial block. Reportedly, Mauser eventually routed these Riff sneaks to the Reichswehr and the paramilitary units of the Nazi Party.

Many sneaks have grip strap markings that indicate issue to the militarized Prussian State Police in the 1929-1934 era. Other sneaks went to the Landespolizei which was organized in 1933 as Hermann Goerings personal police force through his position as Prussian Minister of the Interior and head of the police. It was a source of military training and in 1934 some 2500 police officers from the militarized Landespolizei were transferred to the Army. Among these were many pre-1918 officers (Cooper, p. 54, 160). Militarized police units formed a shadow army, trained and ready to be called for military service when the need arose.

During World War II as the war expanded by the attack on Russia personnel were transferred from domestic police units into battalions of SS-Polizei which saw front line and antipartisan action. Hundreds of these battalions were sent to the front (Wotka, 1981, p. 233).

Figure 20 shows three sneak Lugers whose grip strap unit markings indicate issue to the Prussian State police Landjagerei and Schutzpolizei units. Some of these police reworks were eventually routed to the military (**AUTO MAG IX** p. 4).



Figure 20a. P 08 snipers with Prussian State Police grip strap markings: top to bottom, sn 5749c DWM toggle, sn 3319u, and 8085t. The middle pistol is from the collection of T. Brenner, Juneau, Alaska.

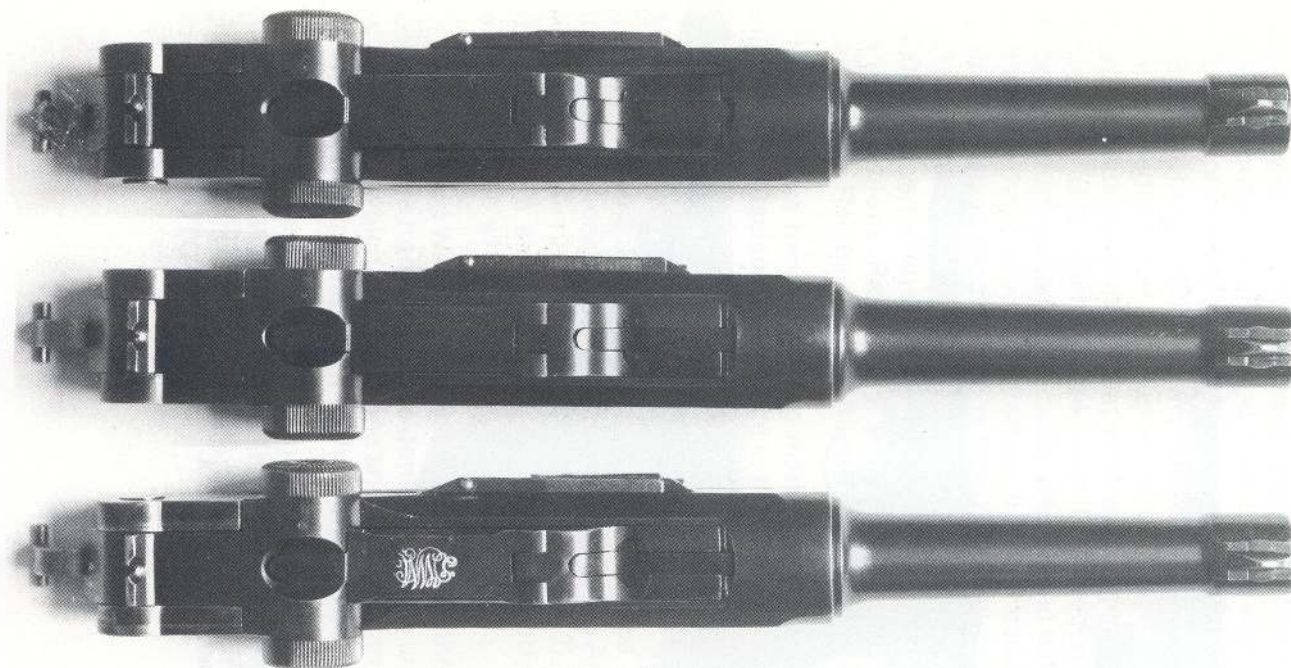


Figure 20b. Toggle and chamber markings for Figure 20a sneaks: top to bottom, serial number (sn) 3319u, 8085t and 5749. All have their original chamber date ground off and the top two also have the manufactures hall mark ground off the toggle. This was done to hide covert rearming in violation of the Treaty of Versailles in the late 1920's and early 1930's. All three have sear safeties. The middle pistol has an intact magazine safety (rare) while that on the bottom pistol is broken off (common). It is reported that magazine safeties (a police requirement) were broken off when pistols were placed in military service.

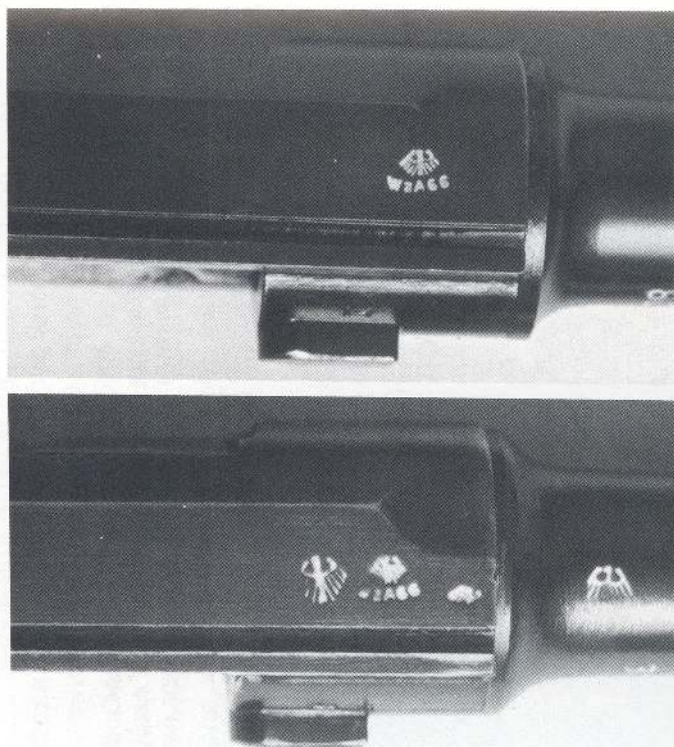


Figure 20c. Figure 20a receiver and barrel police or paramilitary rework stamps: left top, sn 8085t, DWM Mauser rework stamp (Costanzo p. 301 #257); left bottom, sn 3319u, Simpson rework stamp (Costanzo p. 303 #270); right, Simpson replacement barrel, (Costanzo p. 348)

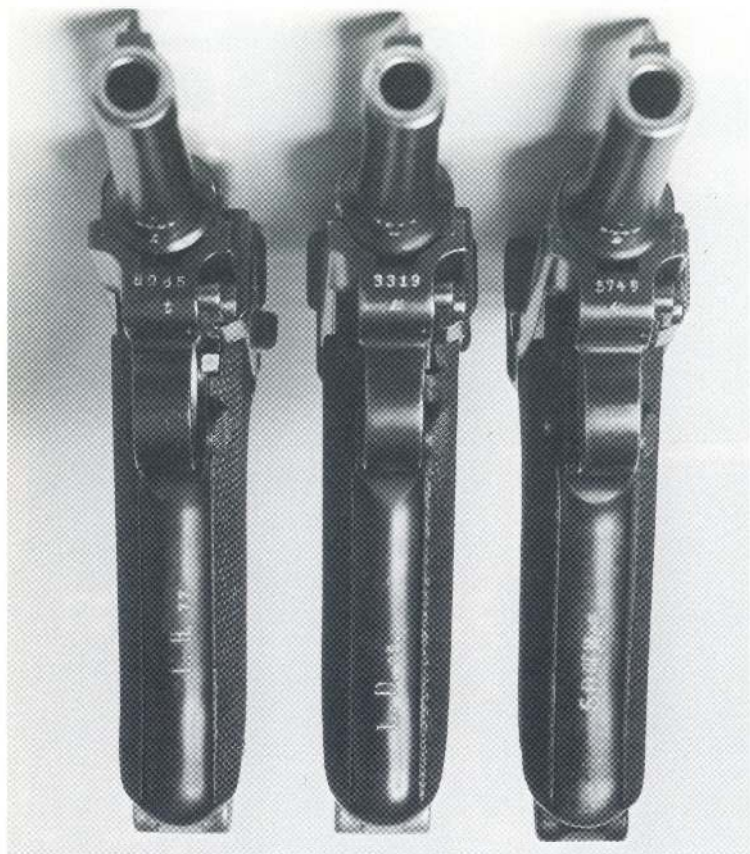


Figure 20d. Figure 20a, sneak Lugers, showing Prussian State Police grip strap markings. See figure 28 for identification. The left pistol, sn 8085t, is in the so called Riff contract serial range.

Other World War I Military Pistols routed to the German Military, Paramilitary or Police

Some World War I military pistols (not sneaks or not bearing the 1920 stamp) were reworked in the 1920-1945 era and reissued to the military or police. They bear either Weimar or Nazi stamps.

P 04 NAVY, P 08, LANGE P 08: (Most have 4" barrel) Most bear Nazi or Weimar military or police rework stamps. Often a WWI military Luger will simply have its barrel replaced with a new one bearing Nazi stamps, Figure 21. A very few bear Weimar Naval stamps.

M1896/16 RED 9 or 1896/12 MAUSER: A few have been observed with Nazi or Weimar rework stamps and a very few have Nazi or Weimar Naval markings.

07 DREYSE: Figure 21. Some bear Weimar police or civil RFV markings, see page 118. 1943 Nazi police manuals indicate police use into World War II. Some of these reworks were originally commercial pistols.

1912 STEYR HAHN: Figure 21. After the 1938 Anschluss, Austria became part of Greater Germany. After early 1940 WWI, Austrian and WWI captured Romanian Steyr Hahns were converted to 9mm Parabellum (stamped 08 on left side of slide) and stamped with the Nazi police eagle L for reissue to the police.

1908/34 STEYR: Figure 21. In 1934 the Austrian police had a number of the 1908 Steyr reworked (heavier slide, added extractor, adjustable front sight, etc.) for police issue. Some of these have S.W. grip strap markings indicating issue to the Austrian State Security Service (Sicherheitswache) (**AUTO MAG** Vol. XI, Wotka, p. 169). After the 1938 Anschluss, Austria became part of Greater Germany and its police force was integrated into the Nazi police. This pistol is listed in the 1943 dated Nazi police equipment manual.



Figure 21a. Pistols with indications of postwar military or police reissue: top to bottom, Steyr Hahn with Nazi police acceptance Stamp-Eagle/L; P 08, 1914 dated, Erfurt with Steyr (1943) replacement barrel-Eagle/623; 1907 Dreyse with R.F.V. Nr. 3461 indicating Reichs Finanz Verwaltung issue; 1908/34 Steyr reworked for the Austrian police, in 1934, which became part of the Nazi police after the 1938 Anschluss.

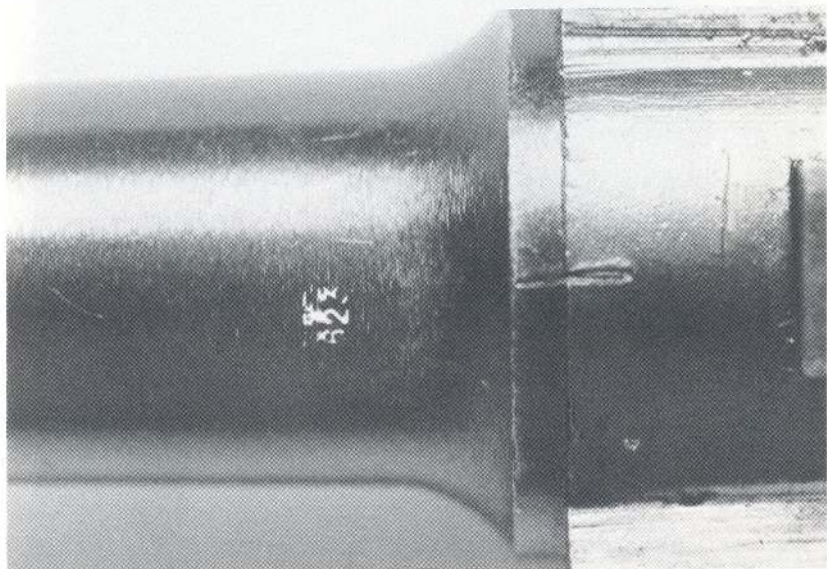
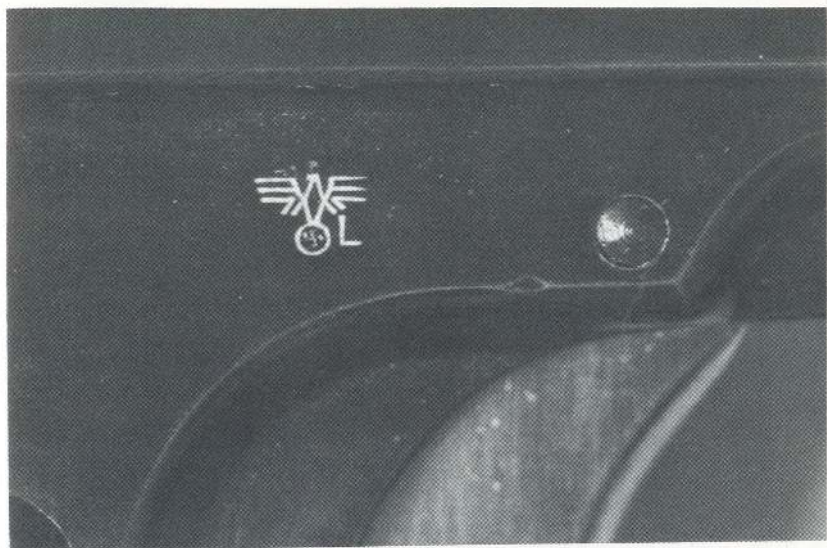


Figure 21b. Top: Nazi eagle/L police stamp on a Steyr Hahn; bottom, Steyr (1943) replacement barrel on a 1914 Erfurt.

A very few World War I commercial pistols: Lugers, 1914 Mausers, 1913 Sauer, M1896/12 Mausers, etc. were caught up in the postwar military or police rework programs. Some of these bear post war military, police or naval rework stamps, while others bear the Nazi wartime commercial stamp (eagle/N replaced the crown/N after April 1940). Jägers, 1908 Steyrs, and 1913 Sauer pistols have been reported with the Eagle/N stamp. Figure 22 shows a reworked 1913 Sauer (WWI commercial) with the Eagle/N stamp on its barrel. These wartime commercial pistols were in all probability intended for military or police self purchase or commercial sales and were not officially procured.



Figure 22. A commercial 1913 Sauer (Mfg. 1914 sn 15361) with post April 1940 eagle/Nazi commercial stamp, probably intended for commercial or self purchase military or police uses. From the collection of Dan Kattenhorn, Juneau, Alaska.

GERMAN MILITARY AND POLICE UNIT MARKINGS

Introduction

One of the most interesting aspects of World War I military and Weimar military and police pistols is that some have markings that can be identified as belonging to specific units. This practice was discontinued by 1936 (there are a few exceptions). In some cases the diligent researcher can trace the history of the unit (and pistol) and the battles it participated in. This is intended as a brief introduction to a complex subject. When used with the references listed below it will enable some unit markings to be identified, and with additional references, the history of some units can be traced. Following are the primary references for this section.

AUTO MAG, Vol. VII-XIII, Mostly contributions by Reinhard Kornmayer, J. Wotka and others.

Chamberlain, **Gun Collectors Digest**, 1974, Faithful Soldiers of the German Empire, p. 25-29.

Costanzo, **World of Lugers Proof Marks**, 1977, p. 192, 221, and 391-392.

Walter, **German Military Handguns 1879-1918**, 1980, p. 57-80.

Walter, **Gun Collectors Digest**, 1977, German Handguns of the First World War, p. 26-28.

Walter, **Luger**, 1977, p. 242-245.

German Naval Unit Markings

1904-1918 Imperial

Naval Lugers were issued to a variety of Naval sea going and land based units. Figure 23 indicates several such units. Unit property markings were applied to the grip straps of some of the 1904, 1906 and 1908 Naval variations of the Luger. Few were applied to the 1914 Naval variation. Table 3 lists and identifies the various Naval grip strap markings.

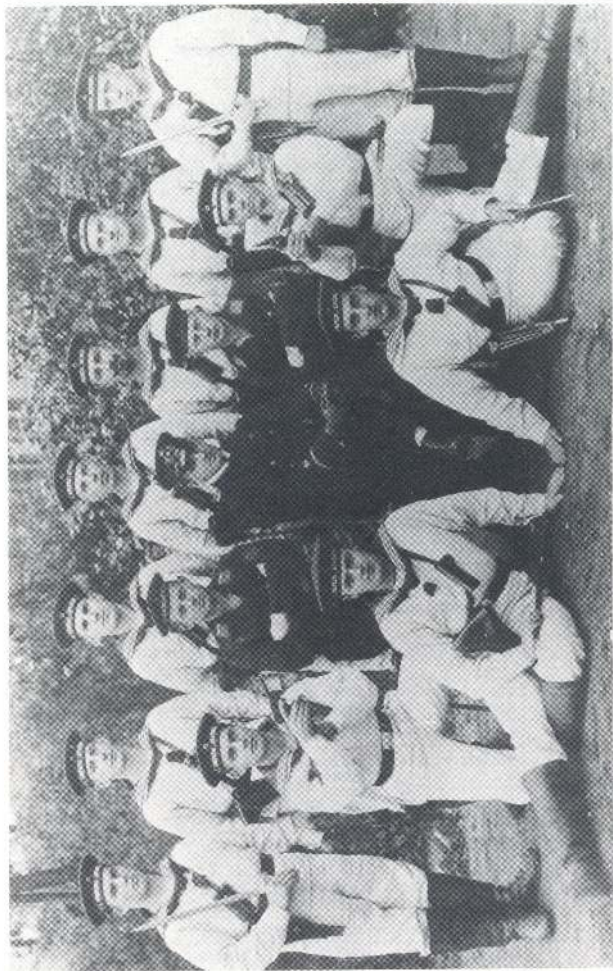


Figure 23. Photograph marked, Kiel, 5. Nov. 1910, showing Navy soldiers armed with Navy Lugers, probably taken after initial training. Cap of left soldier in dark uniform is marked "HALBFLOTILLE" while the others are marked I. TORPEDO-DIVISION. The latter division is stationed in Kiel and its Lugers would be inscribed I.S.B. on their back grip strap. (*Luger-archives Reinhard Kormmayer*)

Table 3, German fleet marking designations found on Imperial Navy Lugers.¹

Strap marking abbreviation	Range of property numbers observed (Constanzo)	German Designation	Translation	Location of unit	Scarcity and number reported in Constanzo
W W	44 - 9978	Werft zu Wilhelmshaven	Dockyard at Wilhelmshaven	Wilhelmshaven	Most common (35)
W K	349 - 17113	Werft zu Kiel	Dockyard at Kiel	Kiel	Most common (41)
W D	172 - 940	Werft zu Danzig	Dockyard at Danzig	Danzig	Common (9)
I M D	33	Erste Matrosen Division	First Sailor Division	Kiel	Rather common (1)
II M D	15	Zweite Matrosen Division	Second Sailor Div.	Wilhelmshaven	Rather common (1)
I W D		Erste Werft Division	First Dockyard Div.	Kiel	Rare
II W D		Zweite Werft Division	Second Dockyard Div.	Wilhelmshaven	Rare
I T D	70 - 2016	Erdte Torpedo Division	First Torpedo Div.	Kiel	Common (4)
II T D	422 - 2488	Zweite Torpedo Division	Second Torpedo Div.	Wilhelmshaven	Common (21)
S B		Seebataillon	Marine Infantry Battalion	Various	Rather common
I S B ²	291 - 702	Erste Seebataillon	First Marine Infantry Battalion	Kiel	Rather common (4)
II S B ²	291 - 702	Zweite Seebataillon	Second Marine Infantry Battalion	Wilhelmshaven	Rather common (1)
III S B ²	291 - 702	Dritte Seebataillon	Third Marine Infantry Battalion	Kiaochow - China Tsingtau	Very rare
III S S ² or III S S B	291 - 702	Dritte Stamm-Seebataillon	Third Home Marine Infantry Battalion (Reinforced)	Wilhelmshaven	Very rare
M A	1 - 34	Matrosenartillerie Abteilung	Naval Artillery Section	Kiaochow - China Tsingtau	Rare (5)
W M A	15	Wilhelmshaven Matrosen Artillerie Abteilung	Wilhelmshaven Naval Artillery Sec.	Wilhelmshaven	Very rare (1)
GOUV KIAU ³	8 - 162	Gouvernement Kiautschou	Government of Kiaochow	Kiaochow - China Tsingtau	Rare (4)
K A		Kustenartillerie Abteilung	Coast Artillery	Five various coastal commands	Extremely rare
A D H ⁴		Artillerie Detachement - Helgoland	Artillery detachment Helgoland	Helgoland Island	Very rare
V A	5	Versuchs Abteilung	Trial or test section	Various	Very rare (1)
I M F		Erste Manöver Flottille	First Maneuver Flotilla	Kiel	Very rare
II M F		Zweite Manöver Flottille	Second Maneuver Flotilla	Wilhelmshaven	Very rare
I M D ⁵	33	Erste Minensuch Division	First Minesweeper Division	North Sea	Very rare
II M D ⁵	15	Zweite Minensuch Division	Second Minesweeper Division	North Sea	Very rare
P T ⁶		Panzer Torpedo (Boot)	Armored Torpedoboat	Various	Very rare
K S S ^{7 8}		Küstenschiff Bezirk V	Coastal Ship - District 5	Wilhelmshaven	Very rare
E B A ⁸		Unknown			Very rare
E D ⁸		Unknown			Very rare
I S E	186	Unknown			Very rare
S W II	272	Unknown			Very rare

Table 3, Continued

¹ This table was modified from an earlier table by Paul Westenberger supplied by T. Knox. Data on range of property numbers observed and number reported is from Constanzo 1977, p. 392 to 395; therefore, some of the strap markings listed do not have this data. Other data was supplied by R. Kornmayer, 1980 correspondence.

² Sea Battalion markings may be found on either the front or back strap of the grip. Property numbers normally precede the unit marking.

³ District in China leased by the German government for 99 years in 1898 that capitulated to Japanese forces during World War One (Auto Mag Vol. VIII, p. 7).

⁴ Might also be encountered with prefix letter of F, L, or C denoting detachments at Friedrichsort, Lehe, or Cuxhaven.

⁵ If with a number following the marking, then a Matrosen Division Luger, if without a number following the marking then a Minensuch Luger.

⁶ These markings normally located on the front strap portion of the grip.

⁷ May be encountered with suffixes of I through IV also, denoting respective districts at Neufahrwasser, Stettin, Kiel or Cuxhaven.

⁸ Noted only on the disc of a naval stock.

1920-1933 Weimar

The Treaty of Versailles imposed severe restrictions on the size of the German Navy and the following reissued World War I military pistols were its primary source of handguns: P 04 Navy, P 08 Military, Lange P 08 and a very few M1896/12 broomhandles.

All bear the O or N naval unit marking. The O (arabic numbers observed run from 32 through 2633) means East or Baltic Sea Group and the N (arabic numbers observed run from 10-2117) means North or North Sea Group. The number following the N or O is a naval property number which were applied to a variety of equipment. Each type of equipment had its own consecutive set of property numbers.

T. Knox has recorded the following combinations of barrel lengths and Naval markings for reissued Lugers.

Naval Luger models 1904, 1906, and 1908: These have 4" barrels, N or O property number added and no Weimar M/anchor Naval mark.

Naval Luger model 1914: These have 4" or may retain 6" barrels, N or O property number added and no Weimar M/anchor mark.

Lange P 08: double date and retains 8" barrel; P 08 Military: 4" barrel; 1920 Commercial (7.65 and 9mm): 4" barrel; the issues with N property number will have the Weimar M/anchor mark while those with the O property will not have the Weimar M/anchor mark.

Naval reissue broomhandle Mausers will be marked with the Weimar M/anchor or Weimar-early Nazi eagle/M and N or O property marks.

German Army Unit Markings 1908-1918

Army unit markings were applied to a variety of equipment including the 1879 and 1883 Reichs revolver and this practice was continued on some pistols through World War I and into the Weimar era. Unit markings are most often found on pre-1915 Lugers, only rarely is a M1896/16 or 12 Mauser found with unit markings. These markings were applied by regimental armourers or supply centers with stamps of varying size. Official Army handbooks (1877, 1909, 1910) designated certain markings to indicate specific units for the four state armies of Germany: Prussia, Bavaria, Saxony and Wurttemberg. In general the unit designations for the four state armies

were somewhat similar but those for Bavaria were preceded by a B. Most important among the official German military handbooks covering the application of unit markings are:

Royal Bavarian Army-D.V. 448 **Vorschrift über das Stempeln der Handwaffen**, Munich 1910

Prussian order-D.V.E. Nr. 185 **Vorschrift über das Stempeln der Handwaffen**, Berlin 1909

German Military Handguns 1879-1918 by J. Walter is the only detailed English language reference on these markings and is highly recommended. Identification of these markings is a complex and in some cases, a confusing process and only some of the more common markings (hundreds exist) will be discussed here.

The markings usually consist of larger capital or scriptic letters in varying combinations with smaller Arabic or Roman numerals stamped into the grip strap (P 08) or butt cap (M1879 or 83). The letters (sometimes accompanied by lower case letters), usually 4.2mm high, indicate the main service or unit type. Sometimes the same letter will have more than one definition or its definition may vary from state army to state army. Definitions of some of the more common letters found are as follows.

- | | |
|--|--|
| A. <i>Feldartillerie</i> - field artillery | K. (<i>script</i>) <i>Kompanie</i> - company |
| A.F. <i>Fussartillerie</i> - foot artillery | K. <i>Kommando</i> - commando |
| A. <i>Abteilung</i> - unit | l. <i>leichte</i> - light |
| B. <i>Bayerisches</i> - Bavarian | L. <i>Luftschiffer</i> - airship |
| Bavarian unit markings are most often preceded by a B. where as those from Prussia, Saxony and Wurtzbg. are not. | M. <i>Munitions</i> |
| Ch. <i>Chevauleger</i> - light horse cavalry (Bavaria only) | M.G. <i>Maschinengewehr</i> - machine gun |
| D. <i>Dragoner</i> - cavalry | P. <i>Pionier</i> - pioneer |
| E. <i>Ersatz</i> - substitute | R. <i>Infanterie Regiment</i> |
| F. <i>Fuss</i> - foot | R. (<i>script</i>) <i>Reserve Infanterie Regiment</i> |
| G. <i>Garde</i> - guard | R. (<i>script</i>) <i>Reserve Reiter Regiment</i> - reserve cavalry regiment |
| H. <i>Husar</i> - hussars - cavalry | S. <i>Feldsignal</i> - field signal |
| I. <i>Infanterie</i> - infantry | s. <i>schwer</i> - heavy |
| J. <i>Jäger</i> - rifle | T. <i>Train</i> |
| K. <i>Kurassier</i> - cavalry | U. <i>Ulanen</i> - (lancers) - cavalry |

The numbers are of two sizes: the largest, 3.1mm high, indicates the regimental or batallion number and the company, battery, squadron, or detachment number; the smallest, 2.1mm high, indicates the weapon number.

Following is a brief explanation of the identification of two unit markings:

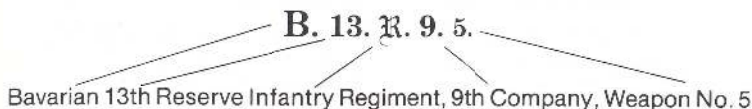
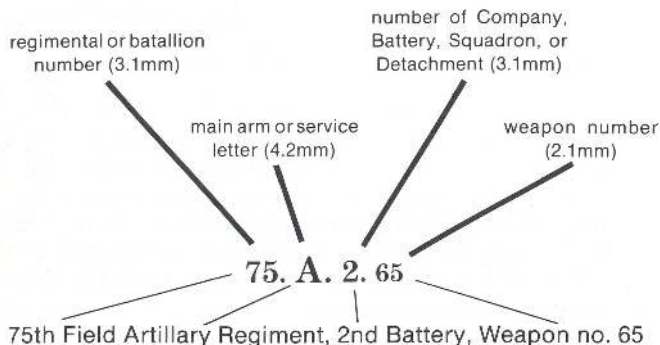


Figure 24 shows Bavarian unit markings on a 1908 DWM and Figure 6d, on a 1912 Erfurt. Table 4 is a list of unit markings mostly identified by Reinhard Kornmayer and presented in **AUTO MAG**.

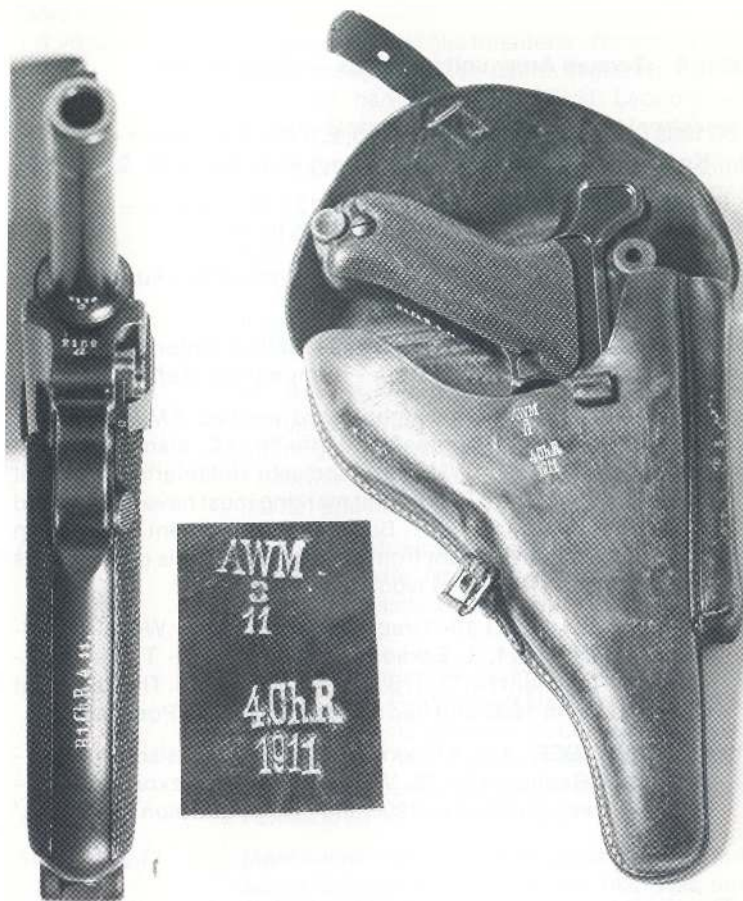


Figure 24. Bavarian grip strap and holster markings for the Ch-Chevauleger Regiment. Complete designation for the pistol marking is - 1st Chevauleger Regiment 4th Squadron weapon no. 11. The holster was made in 1911 by AWM Sattlergenossenschaft located in München. Designation from page 16 of the 1910 dated Royal Bavarian Army handbook.

Table 4 German Army unit markings — designations

- P 08 1908 DWM First Issue, s.n. 2410b, E.A.6.2., Eisenbahn - Arbeiter-Kompagnie (railway work company) Nr.6, Waffe Nr. 2
- P 08 1910 DWM, s.n. 7209c, 2.G.U.3.12., 2nd Garde - Ulanen - Regiment (Prussian) 3rd Eskadron Waffe Nr. 12
- P 08 1911 DWM, 1623e, B.3A.F.4.5., 3rd Bayerisches - Fussartillerie-Regiment, 4th batterie, Waffe Nr. 5
- P 08 1916 DWM, 583a, 138.R.M.G.350, 138th Infanterie Regiment-(Prussian) - Maschinengewehr - Kompagnien Waffe Nr. 350
- P 08 1915, 1920 DWM: On trigger guard marked 3.M.G.K.N.14-3. Maschinen Gewehr Kompanie, Waffe Nr. 14., also marked on trigger guard L.J.R.K.W.11.N.2_ Landwehr - Infanterie - Regiment König Wilhelm 11. Nr. 2. This unit marking must have been added after the date July 29, 1917. Because this regiment received an honor for special heroism from the Kaiser, with his order that as of that date, the regiment would be renamed.
- P 08 1910 DWM: 11.D.1.15-"Dragoner Regiment V. Wedel (POMMERSCHES) Nr.11, 1. Eskadron, Waffe Nr. 15 - Translation - Dragoon Regiment Nr.11, 1. Squadron, gun Nr.15. This regiment was founded in 1866 and had its station in Lyck/Pommern."
- M1896/12 MAUSER: s.n. 416,xxx, 78A.5. "8. Sächsisches Feld - Artillerie - Regiment Nr.78, Waffe Nr.5" This Saxon Artillery - Regiment was founded in 1901 and had its garrison in Wurzen/Saxony."

The pistol type was not specified for the following unit markings, but most are from the P 08.

- B.6.R.M.G.35 = "6 Bayerisches Infanterieregiment. Maschinengewehrkompanie Waffe Nr.35. This regiment had the name 'Kaiser Wilhelm König von Preussen.' It was stationed in Amberg/Oberpfalz."

Table 4, Continued

J.R.26.M.G.70	=	"1. Magdeburgisches Infanterie - Regiment Nr.26 Maschinengewehrkompanie. Waffe Nr.70. This regiment had the name 'Fürst Leopold von Anhalt - Dessau.' It was stationed in Magdeburg."
3./A.R.7.2.	=	"7. Rekrutendepot des 1. Brandenburgischen Feld - Artillerie Regimentes Nr.3, Waffe Nr.2. This regiment had its garrison in Brandenburg A.H."
25.R.2.1.	=	"1. Rheininisches Infanterie - Regiment Nr.25, 2. Kompanie, Waffe Nr.1. This regiment earned the name 'V. Lutzow' and it was stationed in Aachen."
B.15.R.MG.6.	=	15. Bayerisches Infanterie Regiment, Maschinengewehrkompanie, Waffe Nr.6 "This Bavarian Infantry Regiment did wear the name 'König Friedrich August von Sachsen,' it was founded in 1721 and had its garrison in Neuburg/Donau."
G.P.A.18	=	"Pionier - Abteilung der Garde - Kavallerie - division, Waffe Nr.18" Translation might be: "Pioneer - division of the Horse - Guards Division, gun Nr.18."
.13TL.2.3	=	"Württembergisches Train - Bataillon Nr.13, XIII Armeekorps, Feldlazarett Nr.2, Waffe Nr.3. This batallon had its garrison in Ludwigsburg near Stugart, and the unit was founded in 1871. 13TL.4.20. means the same as above except Feldlazarett Nr.4, Waffe Nr.20."
142.R.M.G.77	=	Maschinen - Gewehr - Kompanie des 77. Badi-schen Infanterie Regiments Nr.142, This regi-ment was founded in 1890, and was garrisoned in Mullheim/Baden.
F.R.73.11.K.1	=	Fusilier Regiment Nr.73, 11 Kompanie Waffe Nr.1. This regiment had the name General Feld Marshall Prinz Albrecht von Preussen. It was founded in 1803 and had its Garrison in Hann-over.

Note: Waffe = Weapon = pistol or gun in most cases above

R.G. Unit Markings¹⁸

A very few 1908 and 1914 Commercial Lugers have an R.G. xx unit marking engraved on their left frame panel. One R.G. Luger has a double crown/B military stamp. Table 2 is a listing of R.G., double crown/B and other 1908 and 1914 Commercial Lugers of interest.

The author has had the opportunity to examine both R.G. 14^b (D. Rousseaus collection) and R.G. 136^b (authors collection) side by side. These are shown in Figures 7 and 25. The style and method of engraving are identical and both are blued, indicating the engraving was done at the factory prior to bluing. The height of the engraving is according to military specifications with the R.G. at 4.2mm in height signifying the type of unit and the 14^b or 136^b at 3.1mm in height.

Numerous military unit markings handbooks and various police and military publications were examined to determine the correct R.G. designation without results. Various claims as to the definition of the R.G. markings by some of the worlds leading Luger collectors were found to be without documentation.

In 1981 Reinhard Kornmayer, one of the worlds leading Luger historians, found the R.G. designation through communication with Heinrich Schweingruber, a specialist on the history of the German police. Mr. Schweingruber owns a bayonet established as being used by the Elsass Lothringen police and marked "R.G. 129." The following is extracted from 3 April 1982 correspondence with Mr. Kornmayer: Official documents published in 1908 and covering the laws and administration of Alsace Lorraine indicate that the R.G. markings stand for Reichs Gendarmerie which is the abbreviation for Gendarmerie - Brigade Alsace Lorraine an - "extreme special" police force. Following are a few translations from the official documents:

"The Reichs - Police — or Reichs - Gendarmerie -" was a special police within the Imperial Reich of Germany. It had to care for the police - duties within Elsass - Lothringen and the colonies. The members were taken from the Prussian police or other country - polices in Germany and when they entered to the Reichs-Polizei or Reichs-Gendarmerie they become government officials of the Imperial Reich.

The presence of military stamps on at least one of the R.G. marked Lugers (see Table 2) may indicate that the Reichs Gendarmerie was a militarized police unit with close ties to the Imperial military.

¹⁸ This section prepared with much input from D. Rousseau, see **AUTO MAG XI** p. 222.

Joe Wotka (correspondence 1982), a historian and collector of German police arms, provided the following information based on his research:

Alsace Lorraine, located along the Rhine River between Germany and France, was annexed by Germany following its victory in the Franco-Prussian War of 1870/1871. It was called a Reichsland — an Imperial State Province and was administered with an iron hand under a pseudo military occupation by Prussia.

Mr. Wotka extracted the information below from the following reference:

Das Öffentliche Recht der Gegenwart

Das Öffentliche Recht des Reichslandes elsass-Lothringen,
by Dr. Oscar Fischbach, Tübingen, 1914
page 201, #52 Organization and Cost of Police Administration.

The Gendarmerie was formed into a Brigade, headed by a "Brigadier," his adjutants; 5 district officers, 21 Oberwacht Meisters and 410 mounted and foot Gendarmes. The Gendarmerie was the country/provincial police and was organized under military lines. They were armed with bayonet, revolvers and carbine.

The numbers following the R.G. are found both with and without the "b." Mr. Wotka reports that the mounted Gendarmes were called Berittenen and suggests that the "b" could have denoted a mounted Gendarm. The numbers reported on 1908 and 1914 DWM Commercial Lugers are¹⁹ R.G. 14^b, R.G. 27, R.G. 41, R.G. 51, R.G. 109, R.G. 238, R.G. 252, R.G. 136^b, and R.G. 272. It appears that the mounted Gendarmerie pistols denoted by the "b" are in a separate sequence than those of the foot Gendarmerie. If the numbers following the R.G. represent consecutive Luger weapons numbers than about 136 Lugers were engraved for the mounted Gendarmes and 272 were engraved for the foot Gendarmes for a total procurement of about 408 between 1912 and 1915 (sn 60530-74707).

These R.G. marked Lugers have a rich and interesting history.

¹⁹A Model 83 Reichsrevolver is reported with R.G.-235 L.G. 4397 on its backstrap. The L.G. stands for Landjäger Gumbinnen



Figure 25a. 1914 DWM commercial, s.n. 74596, with commercial proofs, partial military style serial placement (extractor, middle and rear toggle links, sear and sear bar) and a R.G. 136^b Imperial Reich police unit marking. The R.G. 136^b is blued over and therefore probably factory original.



Figure 25b. Style and details of the R.G. 136^b engraving. This is almost identical to the R.G. 14^b engraving found on the 1908 commercial Luger shown in figure 7. The R.G. designates Gendarmerie Brigade Alsace Lorraine. Commercial Lugers with factory original Imperial unit markings are very rare and highly prized by collectors.

Deaths Head - (Totenkopf) - Luger

World War I

A very few World War One military Lugers have a deaths head engraved or stamped over their chamber, Figure 24. According to records kept by Costanzo (**AUTO MAG** XII, p. 202) most of these (98%) are dated 1918 and the rest (2%) are dated 1917 or earlier. A few are stamped GERMANY or MADE IN GERMANY indicating import to the United States sometime after World War I. Gibson (**AUTO MAG** XII p. 84) reports that the TOTENKOPF is found on some 1921 dated Lugers.

The origin of this Totenkopf Luger is a subject of much speculation and debate among leading Luger collectors. (See **AUTO MAG** XII p. 67; Jim Cate, XII p. 84; Randall Gibson, XII p. 202; Sam Costanzo and XIII p. 27-29; John Walter p. 43.) Among the more likely recipients of this Luger listed by the above authors are:

1. Freikorps: Semi-private right wing postwar armies manned by ex-officers and soldiers of the German Army. They kept order in postwar Germany and fought the Bolsheviks in Latvia, Estonia and Poland.
2. Garde - Reserve - Pionier - Regiment: The flame thrower unit of the World War I army was allowed to use the Totenkopf.
3. Condemnation destruction mark: It is of interest that the Totenkopf Luger shown in Figure 13 has the crown over RC repair stamp on the frame, barrel, toggle and receiver.
4. Stosstrupp Hitler: Unit created in 1923 by the embryonic Nazi party. It remained in existence for almost a year and had a strength of 50 to 100 men.
5. Stosstrupp of WWI: These were special shock troops trained in infiltration tactics, mostly in 1918. They were successfully employed in the last German offensives of the war (Dupay, p. 170). According to Walter, the Stosstrupp was never a distinctive unit and sturm - Bataillone never wore the Totenkopf.



Figure 26a. A death's head 1918 dated Erfurt. The crown/RC arsenal repair stamp is found on the frame, barrel, toggle and receiver.



Figure 26b. Details of the Totenkopf. The unit that used these death head Lugers is not known but it was probably involved in the buildup of specially trained storm troopers late in the war. From the collection of Dan Kattenhorn, Juneau, Alaska.

The following are the author's observations:

1. It seems reasonable that if the deaths head were added to Lugers by some post war unit that it would not be mostly confined to 1917 and 1918 dated Lugers. A mix of Lugers with possible chamber dates ranging from 1910-1918 should be found. (Although it would be expected that those dated 1918 would predominate because of the attrition of the earlier dated Lugers.)
2. The buildup of Storm Troopers (Stosstrupp) in late 1917 and mostly in 1918 corresponds to the incidence of Totenkopf Lugers (98% dated 1918 and 2% dated 1917). This is probably more than just a coincidence and it is the author's opinion that some unit involved in this buildup received the deaths head Lugers.
3. A very few deaths head Lugers may have been retained or marked by the Freikorps or even the Stosstrupp Hitler.

In any case, until definitive evidence is found the origin of the Totenkopf Luger will remain a subject of hot debate among collectors.

Reichswehr Unit Markings

With the postwar reorganization of the wartime German State armies into the 100,000 man Reichswehr, it is doubtful if many wartime unit designations still applied. Designations for many post war unit markings are given in a Berlin, 1923 dated, Reichswehr stamped, handbook. The form of these markings is somewhat similar to the wartime markings and some of the letters have the same meanings; however, many new ones were introduced.

Following is a translation of some Reichswehr letter designations:

Abteilung - Unit	Kraftwagen - Motorwagen
Art. - Artillerie - Artillery	L. - Leichte - Light
A. - Ausbildungs - Training	M.W. - Minenwerfer
Batterie - Battery	Ma. - Munitionsanstalt
D. - Division - Division	Pi. - Pionier - Pioneer
F. - Fahr	Preux. - Prussia
F. - Führer - Leader	R. - Regiment - Regiment
Gr. - Gruppen - Group	R. - Reiter - Cavalry
Inf. - Infanterie - Infantry	S. - Sanitäts -
J. - Infanterie - Infantry	S. - Schule -
K. - Kavallerie - Cavalry	Stab - Staff
K. - Kolonne - Column	Za. - Zeugart - Arsenal
K. - Kraftfahr - Motorized	
Kdo. - Kommando - Commando	
Kdtr. - Kommandantur - Commander	

Appendix D contains a listing of unit markings that might be found on Reichswehr pistols, from the 1923 handbook. Table 5 is a listing of Reichswehr marked pistols with unit designations and figure 27 shows a Reichswehr unit stamp on a double date Luger. Reichswehr marked pistols are fairly rare.



Figure 27. Double date Erfurt P08 with Reichswehr infanterie regiment unit markings stamped on it's grip strap. The unit and weapon number are also stamped over it's chamber, which is unusual.

Table 5 Reichswehr marked pistols

- P 08 1925 Simpson: Kdtr.H.8 - Kommandantur Hannover Waffe Nr.8
- P 08 1918/1920 Erfurt: 1/R.R.13.53-1 Squadron 13th Cavalry Regiment
Waffe Nr.53
- P 08 1918/1920 Erfurt: 1/A.R.5.29-1 Batterie 5th Artillery Regiment
Waffe Nr.29
- P 08 1918/1920 DWM: A.R.4.27 (front strap) - 4th (Prussian) Artillery
Regiment, Stab Waffe Nr.27
- P 08 1921 DWM: s.n. 86866-8/J.R.18.12-8. Kompanie des 18. Infanterie
Regimentes. Waffe Nr.12. (8th company of the 18th infantry
regiment. Pistol Nr.12). The companies of this regiment were
stationed at different places of Westfalen (a German country), in
Paderborn, Munster, Hameln and Detmold. The 12th company
was the machine-gun company and it was stationed in Bückeberg
This 12th company of the 18th Infantry - Regiment continued the
tradition of the formerly rifle Batallion Nr.7. The famous "Bücke-
burger Rifle Batallion," which was disbanded with the demobiliza-
tion after WWI.

Note: Waffe = Weapon = pistol (in the above case).

Prussian State Police Unit Markings

Certain unit markings found on post-World War I pistols have long been a matter of much speculation and controversy until Reinhard Kornmayer (W. Germany) found, in an old police archive, a 1932 dated Prussian police manual listing and identifying these markings. (This information was presented in **AUTO MAG** Vol. XIII p. 170) The markings consist of a series of two to four capital letters sometimes followed by Roman numerals and lastly followed by Arabic numbers.

The capital letter K., S. or L. forms the first portion of the marking and their meaning is as follows:

- K. - Kriminalpolizei - detective police force
- S. - Schutzpolizei - municipal police force
- L. - Landjägerei - rural constabulary

The next portion of the marking consists of one to three letters representing the administrative district and they are identified as follows:

A.	- Aurich	K.	- Köslin	Op.	- Oppeln
Al.	- Allenstein	Ka.	- Kassel	P.	- Potsdam
An.	- Aachen	Kg.	- Königsberg	S.	- Schneidemuhl
Ar.	- Arnsberg	Ko.	- Köln	Sch.	- Schleswig
B.	- Berlin	Kz.	- Koblenz	Sd.	- Stralsund
Br.	- Breslau	Lg.	- Lüneburg	Si.	- Sigmaringen
D.	- Düsseldorf	Li.	- Liegnitz	St.	- Stettin
E.	- Erfurt	M.	- Münster	Sta.	- Stade
F.	- Frankfurt	Me.	- Merseburg	T.	- Trier
	- (Oder)	Mg.	- Magdeburg	W.	- Wiesbaden
G.	- Gumbinnen	Mi.	- Minden	Wpr.	- W. Prussia
H.	- Hannover	O.	- Osnabrück		
Hi.	- Hildesheim				

Sometimes Roman numerals will appear after the administrative district indicating the number of the police unit; if there is more than one police unit in the administrative district.

Lastly, the arabic numbers indicate the individual weapon number.

These unit markings are found on Lugers, 1913 Sauers, Sauer Behorden, Walther PPKs and the Mauser 1914's. The K. (detective) unit marking is mostly confined to 7.65 caliber pistols. Lugers with DWM or blank toggle, 1920 or 1921 or blank chamber, sear safety (and most have the remnant of a magazine safety), WaA66 or not, are found with Prussian state police unit marking. Table 6 is a listing of some of these unit markings and the various pistols on which they are found. Figure 28 shows Prussian State Police unit markings on Lugers and a bayonet.

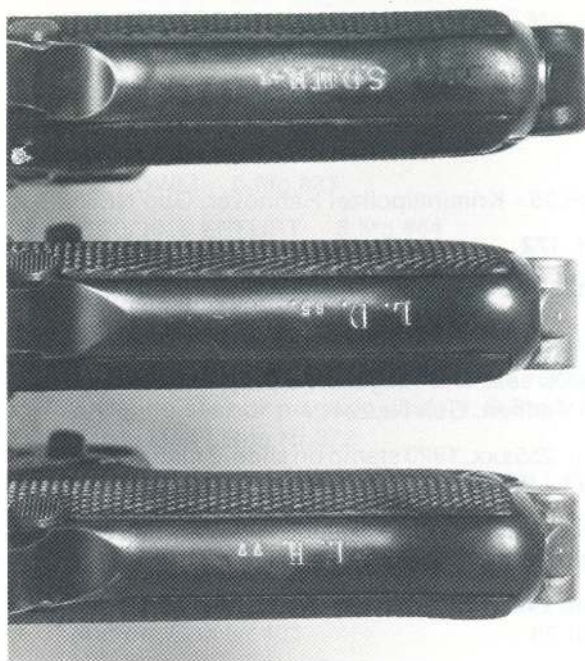


Figure 28 Prussian State Police grip strap markings on sneak P 08s and on a police bayonet. Designations are: S.M.I. 204-Schutzpolizei Muster Unit I bayonet 204; L.H. 77-Landjägererei Hannover gun no. 77; L.D. 85-Landjägererei Düsseldorf gun no. 85; S.D. III. 43.-Schutzpolizei Düsseldorf Unit III gun no. 43.

Table 6 Prussian State Police unit markings**Kriminalpolizei**

SAUER BEHORDEN: **K.D.III.10.** - Kriminalpolizei Düsseldorf Unit III
Gun Nr.10

PPK WALTHER: **K.H.35** - Kriminalpolizei Hannover, Gun Nr.35

1934 MAUSER: **K.H. 172**

1913 SAUER: **K.M.166** - Kriminalpolizei Münster, Gun Nr.166

Schutzpolizei

P 08 DWM: s.n. 900t, sear and magazine safety, WaA66 **S.An.224**
-Schutzpolizei Aachen, Gun Nr.224

1914 MAUSER: s.n. 255xxx, 1920 stamp on slide, 2 matching magazines **S.Ar.III,11** - Schutzpolizei Arnsburg, Unit III, Gun Nr.11

P08: Blank toggle, sear and magazine safety, **S.Ar.1. 11.25** stamped on pistol, magazine and 1933 dated holster

1914 MAUSER: s.n. 248xxx, **S.D.IV. 28** - Schutzpolizei Düsseldorf, Unit IV, Gun Nr.28

P08 DWM: s.n. 5749c, blank chamber, sear safety, matching (5749) wood base magazine **S.D. III 43**

1914 MAUSER: two matching magazines and **S.D.IV 75** on front strap.

→ 1914 MAUSER: s.n. 249984, 1920 on slide, **S.D. IV** on front strap

P 08 1921 DWM: s.n. 9855a, **S.H. 873** - Schutzpolizei Hannover, Gun Nr.873

P 08 1921 DWM: s.n. 88980, E/WaA4, **S.H.1208** - Schutzpolizei Hannover, Gun Nr.1208. This pistol is in the 1923 commercial serial range and may represent an early attempt to conceal rearming by misapplying the 1921 stamp on a post 1923 manufactured pistol.

→ M1896/16 MAUSER: Red 9, 1920 dated rework, **S.K.I.44** - Schutzpolizei Königsberg, Unit I, Gun Nr.44

P 08 DWM: blank chamber, s.n. 4194t, **S.Kz.342.** - Schutzpolizei Koblenz Gun Nr.372

Table 6, Continued

SAUER BOHORDEN: sunburst K and **S.Mg. 34** - Schutzpolizei
Magdeburg, Gun Nr.34

1914 MAUSER: **S.Mg.81**

P 08 1920 DWM: **S.Mg.241**

P 08 1921 DWM: **S.Mg.835**

P 08 1920/1918 ERFURT: **S.Mg.864**

M1896/16 MAUSER: Red 9, 1920 date, **S.S.IV.118** - Schutzpolizei
Schneidemühl, Unit IV, Gun Nr.118

P 08 DWM: s.n. 6808r, DWM toggle, blank chamber, E/Hr29,
commercial style parts numbering - renumbered in military
style, no sear or magazine safety, **S.Sta.I. 372** - Schutzpolizei
Stade Unit I Gun Nr.372

P 08 1921 DWM: s.n. 8723x, WaA4, **S.W.I 775** - Schutzpolizei
Wiesbaden Unit I, Gun Nr.775

LANDJÄGEREI

P 08: blank toggle, magazine and sear safety **L.A.101** - Landjägererei
Aurich, Gun Nr.101

P 08: s.n. 1287u, blank chamber and toggle, WaA66 **L.Ar.193** -
Landjägererei Arnsberg, Gun Nr.193

P 08: s.n. 1454U, blank chamber and toggle, WaA66 **L.Ar.412**

P 08: s.n. 3319u, Sear and magazine safety, blank toggle and
chamber, Simpson WaA66, **L.D.85** - Landjägererei Düsseldorf,
Gun Nr.85

P 08: blank toggle and chamber, sear and magazine safety, pistol
-magazine - tool - holster - bayonet - scabbard all stamped
L.D.111

P 08: s.n. 8085t, blank chamber and toggle, sear and magazine
safety, E/WaA66 **L.H.77** - Landjägererei Hannover, Gun Nr.77

1914 MAUSER: **L.M.25** - Landjägererei Münster, Gun Nr.25

P 08: **L.M.418**

1914 MAUSER: s.n. 168438, **L.Me.235** - Landjägererei Merseburg Gun
Nr.237

Table 6, Continued

- P 08: s.n. 3936t, blank chamber, magazine and sear safety, marked on pistol tool, magazine and holster - **L.P.233**
- P 08: s.n. 8065t, **L.P.464** on front strap
- P 08: Simpson: s.n. 20xxu, sneak blank toggle, sear and magazine safety, pistol and 1929 dated holster marked **L.S.30** - Landjägererei Schneidemühl Gun Nr.30

Other Weimar Police Marked Pistols

Various Weimar police agencies placed identification markings on Lugers, 1914 Mausers, Ortgies, Mauser Broomhandles, 07 Dreyse, 1913 Sauers, 1900 Brownings and Walther PP's and PPK's. Following are Weimar era police markings that have been identified by Joe Wotka (**AUTO MAG**) or other publications.

P.B.Hbg. No. xxxx: **Polizei Bekleidungsamt Hamburg** Waffen **No** xxxx. This means Police Procurement Hamburg Weapon Number xxxx.

P.P.B. Roman numeral Nr.xxxx: **Polizei Präsidium Berlin**. This means Berlin Police Presidium, Department - Roman numeral, Weapon Issue Number xxxx.

P.D.M.xxx: **Polizei Direktion München**. This means Munich Police Administration Weapon number xxx.

R.F.V.No xxx or R.F.V.xxx: **Reichs Finanz Verwaltung**.* This means Reich Finance Administration equipment number xxx. This is more a civil than a police agency.

Table 7 contains information from **AUTO MAG** or Rankin (Vol. II) on reported Weimar era police marked pistols.

* Civil organization created in 1920 consisting of customs officers and tax and revenue collectors.

Table 7 Weimar police marked pistols**HAMBURG POLICE**

MAUSER 1914: s.n. 66651, s.n. 210179 and s.n. 211848 marked P.B.Hbg. No 1090, 2048, and 2592 respectively: Polizei Bekleidungsamt Hamburg Waffe No xxxx. The s.n. 66651 example was made during World War I (Pender, p. 134)

ORTGIES 7.65mm: marked □.P.Hbg.x33

1913 SAUER: s.n. 92819 marked P.B.Hbg.Nr.47 on rear strap

BERLIN POLICE

1907 DREYSE: s.n. 232554 marked P.P.B.IV Nr.1216: Polizei Präsidium Berlin - used by the Kriminal polize of Berlin - This weapon carried issue number 1216 in dept. IV of the P.P.B. (Berlin Police Presidium) (**AUTO MAG VII** p. 175, J. Wotka)

1907 DREYSE: s.n. 247, 334 - P.P.B.IA Nr.184 this inscription x'd out and K.B.184 (Kriminalpolizei Berlin 184) stamped on front grip strap. (**AUTO MAG VII** p. 175, J. Wotka)

1907 DREYSE: K.P.P.B. No. 6555 - The P.P.B portion probably means Berlin Police Presidium.

1900 BROWNING: s.n. 275, 339 K.P.P.B No. 1415 - The P.P.B portion probably means Berlin Police Presidium

MUNICH POLICE

PP and PPK WALTHER: marked PDM - Polizei Direktion München (Police Administration Munich). From 1926-1937 Police Administration Munich marked objects such as typewriters, firearms, etc. with a PDM property number. Some have very early serial numbers and were procured very early in the 1930s during the Weimar Era.

Table 7, Continued**REICH FINANCE ADMINISTRATION**

1907 DREYSE: s.n. 222743 and s.n. 223560 marked R.F.V. No 5132 and No 3461 respectively: Reichs Finanz Verwaltung - revenue collection and customs officers. The 07 Dreyse was assigned to custom house officers mounted and on foot.

Sauers (7.65 and 6.35), Ortgies (7.65 and 6.35) Mauser brooms, and Walther PP and PPK were marked with the R.F.V. during the Weimar era. (Rankin, p. 120)

OTHER POLICE UNIT MARKINGS

1900 BROWNING: s.n. 378067, German Safety Markings, (Feuer and Sicher) marked K.G.SG. No.1

RED 9 BROOM: 1920 stamp, fixed sight, 4" barrel, marked S.U.p.1.1..1.1.1B

BROOM: Rework s.n. 2399, right forward portion of grip strap P.O.60

P 08 DWM toggle, sear and magazine safety, P.D.15

FINAL NOTE

The beginning of the Nazi era marks the end of Volume I. Volume I lays the background for the remarkable events of the Nazi era and finally World War II. This new era involves the building and rearming of the German military based on the lessons of World War I into the most formidable fighting force in world history. Again victorious German legions would stream across Europe and into the heart of Russia. Volume II describes this era and the newly manufactured military, paramilitary and police pistols used during it.

APPENDIX A PISTOLS NOT LISTED IN TEXT

It was the intention of the author to concentrate only on pistols known to be officially procured for military issue or that were almost certainly captured and used in some numbers. A number of pistols not listed in this text have been reported by various authors as having been used or issued by the military of the Central Powers nations. In most cases these pistols are commercial self purchase, obscure or experimental variations, one of a kind, have not been observed with military stamps or were issue revolvers mostly replaced by semi-automatic pistols long before the start of war. Information on these pistols by nation follows.

GERMANY

Indications are that German military procurement of handguns was an orderly process throughout World War I. Almost all pistols officially procured for issue were inspected and bear appropriate military inspection stamps. Supporting this is the fact the 1908 Bayard procured by the German military during its occupation of Belgium bears only German military proofs or stamps and no Belgium proofs.

M1879 and M1883 REICHS REVOLVERS, Cal. 10.55mm: These were the official military revolvers prior to the adaption of the Luger in 1904 and 1908 and bear military stamps and unit markings. Production ceased well before 1914. According to April 7, 1909 official orders from the Army high command, "All revolvers are to be replaced by the selfloading pistol 08" (**AUTO MAG X**, P. 146). This process was not completed by the start of war and numbers remained in service or were recalled to service from storage at the onset of war. 1915 dated military holsters for these revolvers have been reported (fig. 29).

M1896 MAUSER Flatside cal. 7.63 Mauser: According to Breathed (p. 68) the M1896 flatside with German military stamps was manufactured by Mauser in 1899. Less than 500 were procured — probably for est purposes.

M1912/14 MAUSER, Cal. 9mm Parabellum: A retarded blowback experimental design manufactured by Mauser. Only a few hundred were manufactured and Mathews (Vol. I, p. 239) claims several



Figure 29. Model 1879 and 1883 Reich revolvers, although slated for replacement by the Luger in 1908, many still remained in service or were recalled at the onset of the war. (David Byron)

Appendix A, Continued

hundred were put into military service in 1914 and 15. None are known with military stamps.

1902 COMMERCIAL TEST LUGER, 4-inch barrel, cal 7.65 or 9mm P: About 100, 1902 Commercial Lugers (grip safety) in the serial range 22300-22400 bear the German military crown/scriptic D proof and were probably procured for military test purposes.

1906 COMMERCIAL TEST LUGER, 4-inch barrel, cal. 9mm P: Lugers with the 1906 Commercial configuration (grip safety) but having one or two digit serial numbers are reported with military stamps and proofs on the left receiver.

M1910 BROWNING: T. Knox reports a 1910 Browning (SN 44608) that according to a factory letter was sold to Messrs KIND in Hamburg Germany in Sept. 1913. It is marked AMT 24 on the slide. AMT means official and this pistol may have been eventually procured by the military or police.

BERGMANN-BAYARD (1910 or 1912): Stewart in his article Bergman System Military Pistols (p. 129) reports that after the Germans overran the Pieper plant at Herstal, Belgium (in 1914), Bayard pistols were produced because of German requirements. Initially these pistols were made without any proofs because the Belgium proof house was not functioning but later a diamond shaped proof was utilized. These occupation pistols are reported to be in the 15000 to 16000 serial range.*

Using pistols without proof marks is contrary to long established German military practice. One hundred thousand model 1908 Bayards (7.65mm cal.) made at the same plant during the occupation bear German military stamps. It is doubtful that the 1000 Bergmann-Bayards produced without Belgium commercial or German military stamps were officially procured or even used by the military (fig. 30).

1912 FROMMER STOP, cal. 7.65: A 1912 Frommer stop, s.n. 86816, with the German military crown/scriptic D proof on the trigger guard web and just above, is reported in AUTO MAG (Vol. XIV p. 26.)

DREYSE, Cal. 9mm Parabellum: The 9mm Dreyse was manufactured by Rheinmetall from 1910-1915 and according to Mathews (Vol. I, p. 193) was more a commercial than a military venture, with very few manufactured. Its blowback action required a very powerful recoil spring and a tilting slide was used to bypass this spring for loading.

*Late note: John Gillespie (Feb. 1982) reports Bergmann - Bayard, s.n. 15769, without proofs, and with German unit marking 2.G.N.G. 104 on the front strap.

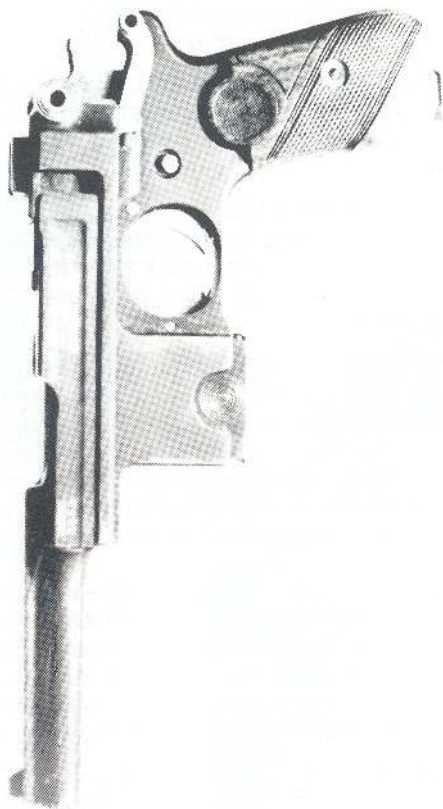


Figure 30. Bergmann Bayard 1910. One author claims that unproofed Bergmann Bayards were used by the occupying Germans. It is doubtful if any unproofed pistols were used by the German military. Some commercial Bergmann Bayards may have been sold to German officers through state arsenals. (David Byron)

Appendix A, Continued

According to Walter (1977, p. 216) about 50 were acquired by the military for trials. None are known with military stamps.

WARTIME COMMERCIAL PISTOLS: Almost any of a very large variety of prewar or wartime commercial pistols (without military stamps) were used by individuals in the military, but through self purchase, not military procurement. Walter in Luger, (p. 25-26) lists over 20 such pistols ranging in caliber from 6.35mm to 9mm and manufactured in Germany, Belgium and Austria.

From before 1900 to 1945 officers in the German Army had to supply their own hand guns (Kornmayer 1980 correspondance). They could purchase ordnance pistols (officially procured with military stamps) from the arsenals or they could buy and use any commercial pistol they wanted. Sometimes the government arsenals offered ordnance and commercial pistols to officers at low prices. Table A-1 is a list consisting of both ordnance (issue) and commercial (non issue) pistols offered by the Prussian Army Arsenal to officers on 8 August 1917 (AUTO MAG XIII, p. 73)

Figure 31 shows a M1896/16 with Red 9 grips that is not military stamped. M1896/16's in the 36000-38000 serial range are reported without military stamps or Red 9 grips. These unstamped Mausers may represent commercial versions of the M1896/16, some of which were intended for self purchase by officers, see page 127.

Table A-1 Ordnance¹ and Commercial² pistols offered for sale by the Prussian Army Arsenal to officers on 8 August 1917 (AUTO MAG XIII, p. 73)

Prices for Pistols and Revolvers		Authors Comments
New Value for a	Amounts to Marks	
Pistol 08	57,00	Ordnance few Commercial
Long Pistol 08	85,00	Ordnance Only
Large Mauser Pistol 9mm with holster stock	83,00	Ordnance and Commercial
*Large Mauser Pistol 7.63mm with holster stock (M1896/12)	62,00	Ordnance and Commercial
*Large Mauser Pistol 7.63mm without holster stock (M1896/12)	55,00	Ordnance and Commercial
Pieper Pistol 9mm (Bergman - Bayard 1910 & 1912)	49,00	Commercial
Bayard Pistol 9mm, small (M1911)	25,00	Commercial
Bayard Pistol 9mm, large	48,00	Commercial
Browning Pistol 9mm small (M1910)	25,00	Commercial
Browning Pistol 9mm large (M1903)	48,00	Commercial
Browning Pistol 9mm large with holster stock (M1903)	59,00	Commercial
*Walther Pistol 9mm (No. 6)	48,00	Commercial - Few Ordnance
Pieper Pistol 7.65mm	34,00	Commercial
Bayard Pistol, 7.65mm (M1908)	34,00	Ordnance - Few Commercial
*Mauser Pistol, 7.65mm (M1914)	39,00	Ordnance and Commercial
*Walther Pistol 7.65mm (M4)	32,00	Ordnance and Commercial
*Jäger Pistol 7.65mm	33,00	Commercial - Few Ordnance
*Dreyse, 7.65mm (M 07)	34,00	Commercial and Ordnance
*Menta, 7.65mm	35,00	Commercial - Few Ordnance
*Sauer & Son Pistol 7.65mm (M1913)	37,00	Commercial and Ordnance
Meffert Pistol, Walther System 7.65mm	36,00	—
Meffert Pistol, Dreyse System 7.65mm	36,00	—
*Langenhahn Pistol 7.65mm (FL Selbstalder)	33,00	Ordnance Few Commercial
Frommer - Stop Pistol 7.65mm (M1912 Frommer Stop)	39,00	Commercial
*Beholla Pistol, 7.65mm	41,00	Ordnance - Few Commercial
Lutticher 6.35mm (Browning)	20,00	Commercial
Revolver M79	36,00	Ordnance from Storage
Revolver M83	35,00	Ordnance from Storage

¹ Ordnance pistols are those with military inspection stamps (some also have commercial proofs)

² Commercial pistols have commercial proofs and no military stamps

* Ordnance pistols with both commercial and military stamps. These pistols, already commercially proofed, were purchased by government military arsenals, inspected and stamped and probably issued to the lower ranks and sold to officers. Purchase by various arsenals would explain the variety of military stamps found on the 07 Dreyse, M4 Walther and FLSelbstlader.

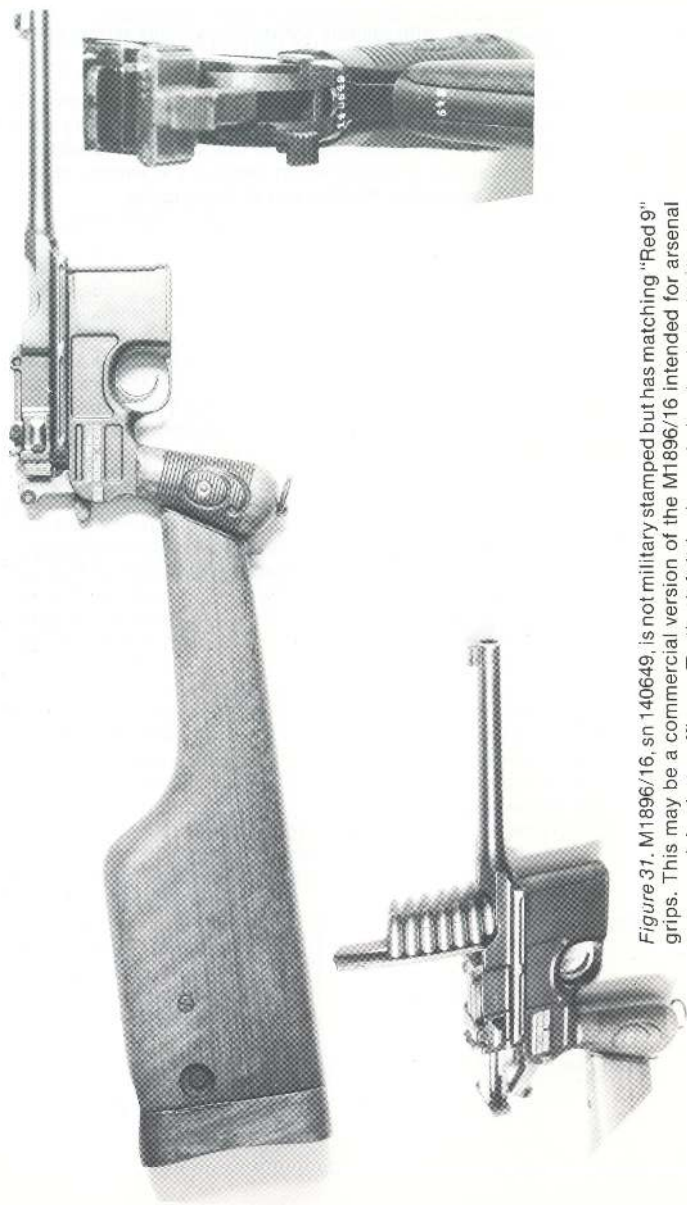


Figure 31. M1896/16, sn 140649, is not military stamped but has matching "Red 9" grips. This may be a commercial version of the M1896/16 intended for arsenal commercial sale to officers. To the left it is shown being loaded with 10 shot charger. The stock iron, right, is numbered to the gun. Matched rigs such as these are rare and highly prized by collectors.

*Appendix A, Continued***AUSTRIA - HUNGARY**

M1896 RAST & GASSER REVOLVER, caliber 8mm: This was the official Austro-Hungarian military revolver prior to the adaption of the M7 Roth Steyr. Some undoubtedly remained in or were recalled to service during World War I (fig. 32).

1908 STEYR, caliber 6.35mm: Contrary to Mathews (p. 285) the author is inclined to believe that manufacture of the 1908 Steyr continued during World War I. There are reports of World War I military holsters for the 6.35 caliber model of this pistol. Fig. 33

1907 DREYSE, caliber 7.65mm: A 1907 Dreyse with 1917 dated Austria - Hungarian military stamps has been reported. (Knox)

FINLAND

M1896/12 MAUSER WARTIME COMMERCIAL, Caliber 7.63 Mauser: Found with Finnish military stamp SA (Suomen Armeija)³ and in special serial range, Figure 34.

On Dec. 6, 1917, Finland declared its independence from Russia and on Jan. 4, 1918, Russia recognized this independence and at the same time tried to impose a Communist government by sending military "volunteers" and arms to aid the Finnish Red Guard. Finland appealed for help and Germany sent arms and 12,000 men to aid the nationalists under Mannerheim. Germany and Finland acted as allies to push the Russian and Finnish Communists out of Finland. There are reports of Finnish volunteers fighting with the Germans on other fronts.

Most of the Finnish marked broomhandles are identical to the late wartime commercial M1896/12 Mauser (with NS safety) except they are in a different serial range. Reported SA marked brooms appear in the 7600-9900 s.n. range and in the 17000-23000 s.n. range. (**AUTO MAG XII**, p. 50). The wartime commercial serial number range is 290,090 to 433,900. Germany probably supplied these pistols to Finland along with other military aid prior to the end of World War I.

³ Means Finnish Army

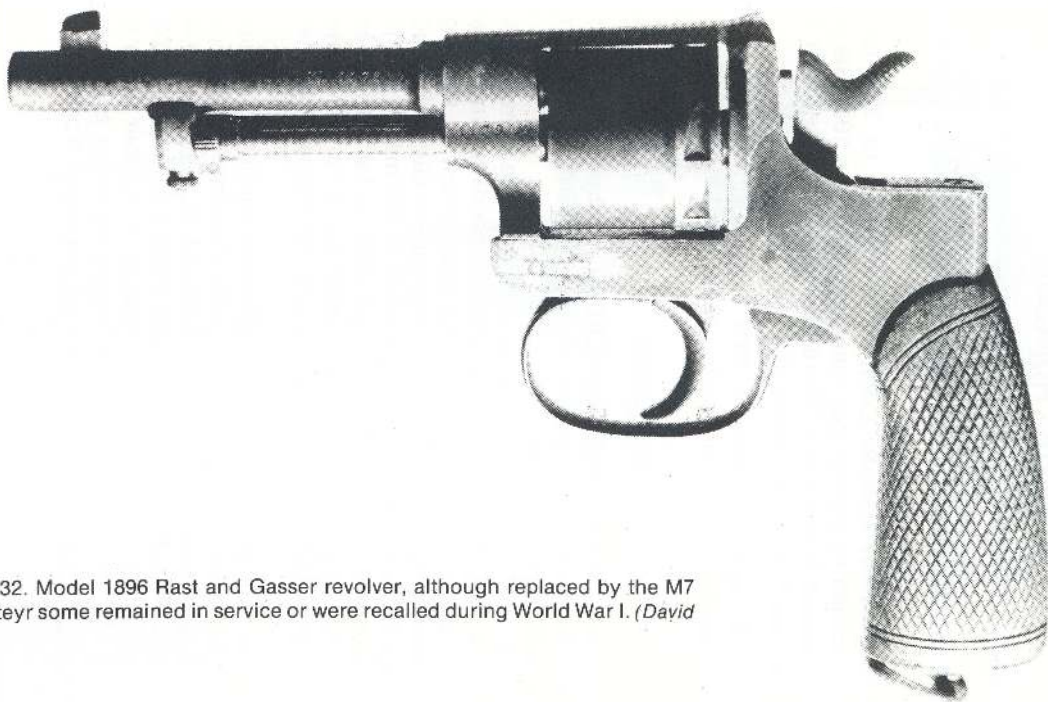


Figure 32. Model 1896 Rast and Gasser revolver, although replaced by the M7 Roth Steyr some remained in service or were recalled during World War I. (David Byron)



Figure 33. 1908 Steyr caliber 6.35mm, there are reports of World War I military holsters for this pistol. (David Byron)

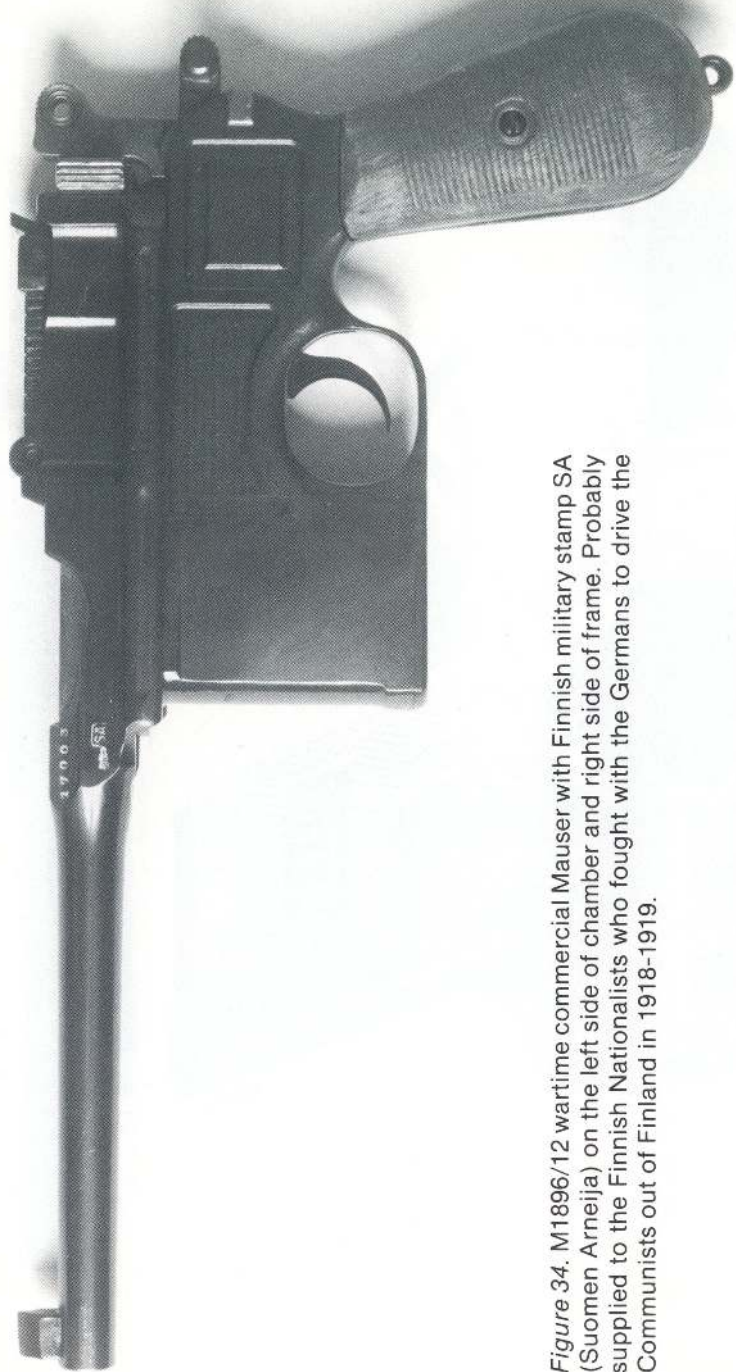


Figure 34. M1896/12 wartime commercial Mauser with Finnish military stamp SA (Suomen Arneija) on the left side of chamber and right side of frame. Probably supplied to the Finnish Nationalists who fought with the Germans to drive the Communists out of Finland in 1918-1919.

APPENDIX B

Table B1 Listing detailed characteristics of WWI military pistol models.

MODEL	CALIBER	ACTION	MAG. CAP.	WEIGHT OUNCES	BARREL LENGTH INCHES	OVERALL LENGTH INCHES
P 04 DWM NAVY	9mm P	Recoil operated toggle, striker fired	8	36	6	10.75
P 08 STANDARD	9mm P	Recoil operated toggle, striker fired	8	31	4	8.75
P 08 LANGE	9mm P	Recoil operated toggle, striker fired	8	39	8	12.75
LUGER 1900 BULGAR	7.65mm P	Recoil operated toggle, striker fired	8	31	4.75	9.5
M1896/16 MAUSER	9mm P	Locked breech, hammer fired	10 (T)	44	5.5	12.25
M1896/12 MAUSER	7.63mm Mauser	Locked breech, hammer fired	10 (T)	44	5.5	12.25
M6 WALTHER	9mm P	Blowback, hammer fired	8	34	4.75	8.25
M4 WALTHER	7.65mm	Blowback, hammer fired	8	19.5	3.35	6.00
1913 SAUER	7.65mm	Blowback, striker fired	7	20.3	2.95	5.67
07 DREYSE	7.65mm	Blowback, hammer fired	7	25	3.66	6.25
F.L. SELB- STLADER	7.65mm	Blowback, hammer fired	8	23.5	4.15	6.6
BEHOLLA	7.65mm	Blowback, striker fired	7	22.5	2.88	5.5
MENTA	7.65mm	Blowback, striker fired	7	22.5	2.88	5.5
1914 MAUSER	7.65mm	Blowback, striker fired	8	21.0	3.40	6.00
JÄGER	7.65mm	Blowback, striker fired	7	22.8	3.11	6.10
1900 BROWNING	7.65mm	Blowback, striker fired	7	22.0	4.0	6.75
1903 BROWNING	9mm Brg. Long	Blowback, hammer fired	7	32.0	5.0	8.0
1908 BAYARD	7.65mm	Blowback, hammer fired	5	16.0	2.25	4.9
M7 ROTH STEYR	8mm Roth Steyr	Locked, long recoil rotating barrel, striker fired and semi-double action	10(T)	36.0	5.18	9.18
1912 STEYR HAHN	9mm Steyr	Recoil operated, rotating barrel, hammer fired	8(T)	34.0	5.12	8.5
1912 FROMMER	7.65mm 9mm K	Long recoil, rotating bolt head, hammer fired	7	22	3.8	6.15
1908 STEYR	7.65mm	Blowback, hammer fired	7	22	3.6	6.4

Appendix B, Continued

TABLE B2 WWI CENTRAL POWERS PISTOL AMMUNITION BALLISTICS			
CARTRIDGE	BULLET WT. GR	MUZZLE VELOCITY	MUZZLE ENERGY
7.63mm Mauser	85	1425 fps	383 ft.lb.
7.65mm	71	900 fps	128 ft.lb.
7.65mm Para.	93	1148 fps	272 ft.lb.
8mm Roth Steyr	116	1090 fps	306 ft.lb.
9mm Kurtz	92	886 fps	160 ft.lb.
9mm Brg. Long	110	1050 fps	270 ft.lb.
9mm Parabellum	123	1130 fps	350 ft.lb.
9mm Steyr	117	1217 fps	385 ft.lb.

APPENDIX C.

VALUES OF WORLD WAR I MILITARY PISTOLS WITH MILITARY STAMPS OR OTHER INDICATIONS OF OFFICIAL PROCURMENT

PISTOL TYPE AND VARIATION		10-EXT. RARE. 1-COMMON AVAILABILITY	PRICE \$ VG. - EXC+	COMMENTS
LUGER NAVAL	9mm			
Var: 1904		10+	4000-8000	Naval Lugers are now legal with shoulder stock. Add \$700 plus for rig. The 1904 Var. is the most desirable of all German military issue Lugers.
Var: 1906 1st issue		9	1200-2000	
Var: 1906 2nd issue		9	1200-2000	
Var: 1908		9	1200-2000	
Var: 1914		8	1000-1800	
P08 IMPERIAL DWM	9mm			
Var: 1908 1st issue		6	500-900	
Var: 1908 2nd issue		3	450-700	
Var: 1914		1	350-650	
1908 and 1914 COMMERCIAL MILITARY DWM		9	850-1300	Military unit markings add greatly to value
P08 ERFURT	9mm			
Var: 1908		3	450-750	
Var: 1914		2	350-700	
LANGE P08	9mm			
ERFURT		7	700-1300	Artillery Lugers are also legal with shoulder stock. Add \$500 plus for rig.
DWM		6	650-1100	
M1896/16 RED 9	9mm	6	750-1300	Legal with stock add \$350+
M1896/12 WARTIME COMM.	7.63mm	5	600-900	Legal with stock add \$350+
M 6 WALTHER	9mm	10+	2000-3500	The rare WWI German military
M 4 WALTHER	7.65mm	3	125-200	
1913 SAUER	7.65mm	8	150-250	
07 DREYSE	7.65mm	4	100-175	
FL SELBSTLADER	7.65mm	3	125-175	
BEHOLLA	7.65mm	3	120-170	
MENTA	7.65mm	7	150-200	
1914 MAUSER	7.65mm	5	175-300	Prussian Eagle-add \$100+
JÄGER	7.65	9	350-500	Desirable
1900 BRG. FEUER & SICHER	7.65mm	6	125-225	
1903 BRG. "BELGIUM"				
9mm Brg. Long		4	150-250	
1908 BAYARD	7.65mm	2	100-175	
M7 ROTH STEYR—STEYR MFG.	8mm	3	150-300	
M7 ROTH STEYR BUDAPEST MFG.	8mm	3	175-325	
1912 STEYR HAHN	9mm Steyr	1	125-250	

Appendix C. Continued

1912 STEYR HAHN RUMANIAN		7	175-300	
1912 FROMMER STOP7.65mm		4	125-200	
1896/12 MAUSER AUSTRIAN	7.63	7	650-1200	Legal with stock add \$350+
1908 STEYR	7.65mm	2	150-250	
LUGER DWM BULGARIAN				
M 1900	7.65mmP.	10	4000-6000	Highly desirable
M 1906	7.65mmP.	9	3500-5500	
M 1908	9mmP.	8	800-1500	
M1896 MAUSER TURKISH	7.63mm	10+	2500-4500	Exotic
M1903 BROWNING TURKISH	9mm Brg. Long	9	400-900	Exotic
M1908/34 STEYR	7.65mm	6	175-300	
P08 SNEAKS	9mm	4	500-800	Numerous variations and interesting
STEYR HAHN NAZI E/L	9mm	5	225-375	
M1896/12 MAUSER WARTIME COMMERCIAL FINNISH-SA marked	7.63mm	9	650-1200	Desirable

APPENDIX D REICHSWEHR UNIT MARKINGS**Table D-1 Reichswehr Unit Markings**

Gr.Kdo.1:	Gruppenkommando 1
1 Div.:	1. Division
1.K.D.:	1. Kavallerie Division
Inf. F.I.:	Infanterieführer I
Art. F.I.:	Artillerieführer I
J.R.1:	1. (Preuß.) Infanterie-Regiment, Stab
I.J.R.1:	I. Bataillon 1. (Preuß.) Infanterie-Regiments, Stab
4/J.R.1:	4 Maschinengewehr-Kompanie 1 (Preuß.) Infanterie-Regiment
M.W./J.R.1.:	13 (Minenwerfer)-Kompanie 1. (Preuß.) Infanterie-Regiment
A./J.R.1.:	Ausbildungs-Bataillon 1. (Preuß.) Infanterie- Regiments, Stab
R.R.1.:	1. (Preuß.) Reiter-Regiment, Stab
1./R.R.1.:	1. Eskadron 1. (Preuß.) Reiter-Regiments
A./R.R.1.:	Ausbildungs-Eskadron 1. (Preuß.) Reiter- Regiments
A.R.3.:	3. (Preuß.) Artillerie-Regiment, Stab
I.A.R.3.:	I. Abteilung 3. (Preuß.) Artillerie-Regiments, Stab
1./A.R.3.:	1. Batterie 3. (Preuß.) Artillerie-Regiments
9./A.R.3.:	9. Kraftwagen-Batterie 3. (Preuß.) Artillerie- Regiments
A./A.R.3.:	Ausbildungs-Batterie 3. (Preuß.) Artillerie- Regiments
IV./A.R.3.:	IV. Reitende Abteilung 3. (Preuß.) Artillerie- Regiments, Stab
11./A.R.3.:	11. Reitende Abteilung 3. (Preuß.) Artillerie- Regiments, Stab
6./A.R.7.:	6. (Gebirgs.) Batterie 7. (Bayer.) Artillerie- Regiments

Appendix D, Continued

L.A.K.II./A.R.7.:	Leichte Artilleriekolonne II. Abteilung 7. (Bayer.) Artillerie Regiments
Pi.B.1.:	1. (Preuß.) Pionier-Bataillon, Stab
Pi.B.1.Pi.K.:	1. (Preuß.) Pionier-Bataillon, Stab, Pionierkolonne
1./Pi.1.:	1. Kompanie 1. (Preuß.) Pionier-Bataillon
Br.K.Pi.1.:	Brückenkolonne 1. (Preuß.) Pionier-Batallions
S.Zg.Pi.1.:	Scheinwerferzug 1. (Preuß.) Pionier-Bataillons
N.A.1.:	1. (Preuß.) Nachrichten-Abteilung, Stab
1./N.1.:	1. Kompanie 1. (Preuß.) Nachrichten-Abteilung
K.A.1.:	1. (Preuß.) Kraftfahr-Abteilung, Stab
1.K.1.:	1. Kompanie 1. (Preuß.) Kraftfahr-Abteilung
F.A.7.:	7. (Bayer.) Fahr Abteilung, Stab
4./F.7.:	4. (Gebirgs.) Eskadron 7. (Bayer.) Fabr. Abteilung
S.A.1.:	1. (Preuz.) Sanitäts Abteilung
S.A.1.F.:	1. (Preuz.) Sanitäts Fuhrpersonal
S.A.1.K.:	1. (Preuz.) Sanitäts Kraftfahrpersonal
J.S.:	Infanterie-Schule
K.S.:	Kavallerie-Schule
A.S.:	Artillerie-Schule
Pi.S.:	Pionier Schule
H.V.U.A.:	Heeres Veterinär Untersuchungsamt
M.L.B.:	Militär-Lehrschmiede Berlin
M.L.H.:	Militär-Lehrschmiede Hannover
M.L.M.:	Militär-Lehrschmiede München
Kdtr. B.:	Kommandantur Berlin
Kdtr. Br.:	Kommandantur Breslau
Kdtr. C.:	Kommandantur Cüstrin
Kdtr. D.:	Kommandantur Dresden
Kdtr. G.:	Kommandantur Glaß
Kdtr. Gl.:	Kommandantur Glogau
Kdtr. H.:	Kommandantur Hannover
Kdtr. J.:	Kommandantur Jngolstadt

Appendix D, Continued

Kdtr. L.:	Kommandantur der Befestigung Lößen
Kdtr. Mg.:	Kommandantur Magdeburg
Kdtr. Ma.:	Kommandantur Marienburg
Kdtr. Mü.:	Kommandantur München
Kdtr. Mr.:	Kommandantur Münster
Kdtr. O.:	Kommandantur Oppeln
Kdtr. Ste.:	Kommandantur Stettin
Kdtr. Stu.:	Kommandantur Stuttgart
Kdtr. U.:	Kommandantur Ulm
Kdtr. Cu.:	Kommandantur Cuxhaven
Kdtr. Ki.:	Kommandantur Kiel
Kdtr. P.:	Kommandantur Pillau
Kdtr. S.:	Kommandantur Swinemünde
Kdtr. W.:	Kommandantur Wilhelmshaven
Ü.PI.A.:	Truppenübungsplatz Kommandantur Altengrabow
Ü.PI.Ar.:	Truppenübungsplatz Kommandantur Arns
Ü.PI.D.:	Truppenübungsplatz Kommandantur Döberitz
Ü.PI.G.:	Truppenübungsplatz Kommandantur Grafenwöhr
Ü.PI.H.:	Truppenübungsplatz Kommandantur Hammerstein
Ü.PI.K.:	Truppenübungsplatz Kommandantur Königsbrück
Ü.PI.M.:	Truppenübungsplatz Kommandantur Münsingen
Ü.PI.N.:	Truppenübungsplatz Kommandantur Neuhammer
Ü.PI.O.:	Truppenübungsplatz Kommandantur Ohrdruf
Ü.PI.S.:	Truppenübungsplatz Kommandantur Senne
Sch.PI.J.:	Artillerie Schießplatz Jüterbog
Sch.PI.K.:	Schießplatzkommando Kümmersdorf
Pi.Ü.PI.KI.:	Pionier-Übungsplatz-Kommando Klausdorf
Pi.W.St.KI.:	Pionierwerkstatt Klausdorf
Za.C.:	Zeugamt Cassel

Appendix D, Continued

Za.S.:	Zeugamt Spandau
N.Za.K.:	Reben-Zeugamt Königsberg
Ma.C.:	Munitionsanstalt Cassel
Ma.H.:	Munitionsanstalt Hannover
Ma.Jn.:	Munitionsanstalt Jngolstadt
Ma.J.:	Munitionsanstalt Jüterbog
Ma.K.:	Munitionsanstalt Königsberg
Ma.Ste.:	Munitionsanstalt Stettin
Ma.Z.:	Munitionsanstalt Zeithain

BIBLIOGRAPHY

- AUTO MAG**, National Automatic Pistol Collectors Association, Box 15738, Tower Grove Station, St. Louis, Missouri, 63163 Editor Tom Knox, Published monthly. An Informal publication that contains a large variety of articles, letters, and comments from leading collectors.
- Belford, J.N. and Dunlap, J., **The Mauser Self Loading Pistol**, Borden Publishing Company, Alhambra, California, 1969
- Breathed, John W. and Schroeder, Joseph J., **System Mauser**, Handgun Press, Chicago, 1967
- Boothroyd, Geoffrey, **The Handgun**, Bonanza Books, New York, 1970
- Carlson, John R., correspondence, 1980 an expert on the 1912 Steyr Hahn
- Coatney, Louis R., 1979, a war games expert
- Cooper, M., **The German Army 1935-1945**, Stein and Day, New York, 1978
- Cormack, A.J.R., **Famous Pistols and Hand Guns**, Profile Publications Ltd., 1977
- Costanzo, Sam, **World of Lugers Proof Marks Volume I**, Sam Costanzo, 1977
- Datig, Fred A., **The Luger Pistol**, Fadco Publishing Co., Beverly Hills, California, 1958
- Drollinger, W.O., Correspondence, 1978-1979, The expert on Browning pistols.
- Dupuy, Col. T.N., **A Genius for War—The German Army and General Staff 1807-1945**, Macdonald and Janes, London, 1977
- Gillespie, John, phone conversation, 1980
- Hogg, Ivan V., **German Pistols and Revolvers 1971-1945**, Arms and Armour Press, London, 1971
- Hogg, Ivan V. and Weeks, John S., **Military Small Arms of the 20th Century**, Digest Books, Inc., Northfield, Ill., 1973

Bibliography, Continued

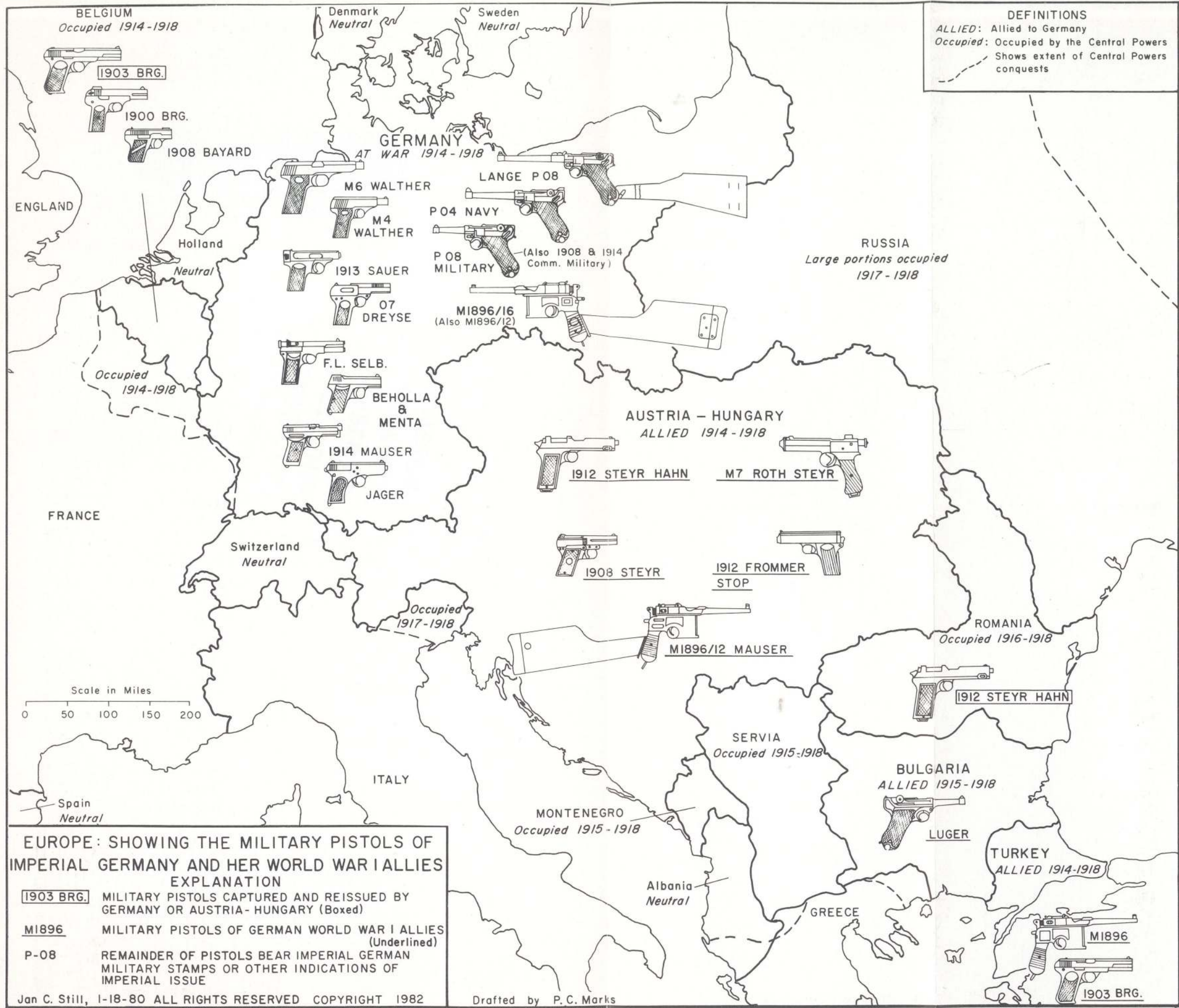
- Johnson, David, correspondence 1981 an expert on the M7 Roth Steyr
- Jones, Harvey E., **Luger Variations (Volume One)**, Published by author, Torrence, California, 1959
- Kenyon, Charles Jr., **Lugers at Random**, Handgun Press, Chicago, 1969
- Knox, Tom, Correspondence 1978-79, Tom was especially helpful in compiling a list of WWI pistols with military stamps and provided much data on German Naval pistols and their unit markings. The expert on German Naval pistols.
- Kornmayer, Reinhard, **Kleine Geschichte der Parabellum Pistole**, Privately published, Singen, 1974
- Kornmayer, R. correspondence 1980, Source of World War I photographs and German unit markings handbooks. A world known luger researcher.
- Lafferty B., "*Imperial Military Lugers*", **Guns** - May 1975
- Lafferty B., phone conversation 1981, The Luger expert
- Macauley, E., Correspondence 1978-1979, provided information on rare WWI pistols, gave production estimates for various pistols and provided the Walther model 6 photograph. A German firearms expert
- Mathews, J. Howard, **Firearms Identification (Volumes I-III)**, University of Wisconsin Press, 1962, Volume III in 1973. Details of manufacture, time span of manufacture, etc. were extracted from this text for some of the less well known pistols.
- Morris, Mike, "*Will of the Wisp Artillery*"- an article in the January 1980 **Arms Gazette**
- Mosley, L., **The Reich Marshal**, Dell Publishing Company, New York, 1974.
- Pender, Roy G., **Mauser Pocket Pistols 1910-1946**, Collectors Press, Houston, 1971
- Rankin, James L., **Walther Volume II Engraved Presentation and Standard Models**, p. 116.

Bibliography, Continued

- Redmond, Pat, 1982 correspondence, a world known collector of German Naval pistols.
- Rosseau, Don, correspondence 1980 and 1981, generously allowed access to his extensive Imperial Luger collection
- Smith, H.B. and Joseph E., **Small Arms of the World**, The Stackpole Company, Harrisburg, Pa. 1960.
- Stewart, James B., "*Bergman System Military Pistols*", an article in the 1973 **Gun Digest**, p. 129.
- Strategy and Tactics; nr51, World War I 1914-1918 by Frank Davis.
- Sweeting C.G., **German Proof Marks and Arms Codes 1860-1960**, 1960. Backed up by numerous German military publications
- Taylor, R., Correspondence 1980
- Tokarsky, H., Correspondence 1979
- Waffen und Schiesstechnischer Leitfaden, Fur Die Ordnungspolizei Karl Fischer Verlag R. Eisenschmidt, Berlin 1943. Cited as 1943 Nazi Police equipment manual.*
- Walter, John, "*German Handguns of the First World War*", **Gun Collectors Digest, Vol. II**, 1977, p. 10-29, cited as Walter 1977.
- Walter, John, **German Military Handguns 1879-1918**, 1980, Arms and Armour Press, London
- Walter, John, **LUGER**, Fortress Publications Inc., Stoney Creek Ontario, 1977, Excellent and well researched reference on the Parabellum as well as other pistols. Cited as Walter.
- Wilson, R.K. and Hogg, Ivan V., **Textbook of Automatic Pistols**, Stackpole Books, Harrisburg, Pa., 1943 and 1945, contains much information on less well known early semiautomatic pistols.
- Wotka, Joe, correspondence 1979 and 1980. The expert on German police pistols
- Wotka, Joe, Chapter 6 in Johnson's **Collecting Edged Weapons of the Third Reich**, Vol. IV, 1981.

Military Pistols - Variations Imperial Germany and her World War I Allies			
Model Variation	Est. Military Procurement	Model Variation	Est. Military Procurement
IMPERIAL GERMAN		IMPERIAL GERMAN, continued	
P 04 Navy	total - 63000	1914 Mauser	
1904	1200	Wartime Commercial	few
1906 1st. Issue	21000	Imperial Army Issue	100000
1906 2nd. Issue		Jäger	2000
1908	8500		
1914	32000	IMPERIAL GERMAN, Belgian Mfg.	
P 08 Military (Army) DWM	total - 665000	1900 Browning	few thousand
1908 1st. Issue	25000	1903 Browning - Captured	few thousand
1908 2nd. Issue	70000	1908 Bayard	100000
1914	570000		
1908 1st. Issue Navy stamped	few	AUSTRO-HUNGARIAN EMPIRE	
Commercial Military Luger DWM	total - 1500	M7 Roth Steyr	total - 90000
Army	900	Austrian	60000
Navy	200	Hungarian	30000
Reichs Gendarmerie	400	1912 Steyr Hahn	300000
P 08 Military Erfurt	total - 492000	1912 Steyr Hahn Romanian Capt.	few thousand
1908	57000	1912 Frommer Stop	thousands
1914	435000	M1896/12 Mauser Austrian	few thousand
Lange P 08	total - 205000	1908 Steyr	few thousand
Erfurt	25000		
DWM	180000	BULGARIA	
M1896/16 Mauser "Red 9"	140000	1900 Bulgarian Luger	750
M1896/12 Mauser	50000	1906 Bulgarian Luger	1500
M6 Walther	100	1908 Bulgarian Luger	10000
M4 Walther	75000		
1913 Sauer	10000	OTTOMAN EMPIRE - TURKEY	
07 Dreyse	80000	M1896 Mauser	1000
F.L. Selbstlader	70000	M1903 Browning	7500
Beholla	40000		
Menta	1000		

During World War I many M1879 and M1883 Reich revolvers remained or were recalled to German service. Many Lugers, M1896/16 or 12 Mausers, 1907 Dreyse, and some 1914 Mausers, 1913 Sauer, 1900 Brownings, 1908 Bayards, 1912 Steyr Hahns and 1908 Steyrs were reissued to the postwar Weimar or Nazi military, paramilitary or police.



BELGIUM
Occupied 1914-1918

Denmark
Neutral

Sweden
Neutral

GERMANY
AT WAR 1914-1918

ENGLAND

Holland
Neutral

Occupied
1914-1918

FRANCE

Switzerland
Neutral

Occupied
1917-1918

Spain
Neutral

ITALY

MONTENEGRO
Occupied 1915-1918

Albania
Neutral

GREECE

RUSSIA
Large portions occupied
1917-1918

AUSTRIA - HUNGARY
ALLIED 1914-1918

ROMANIA
Occupied 1916-1918

BULGARIA
ALLIED 1915-1918

TURKEY
ALLIED 1914-1918

